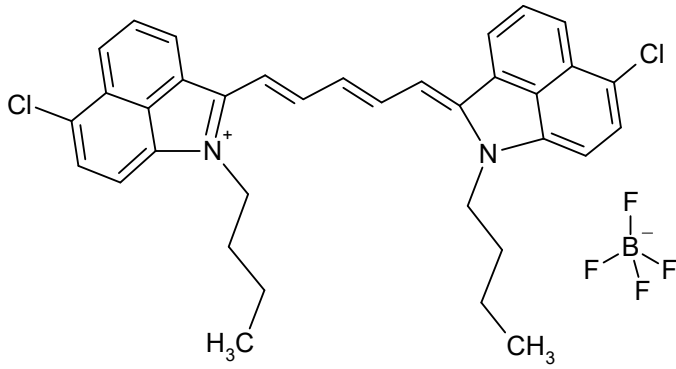


S01426

CAS #



Absorption

Methylene chloride

901 nm 239300 M-1 cm-1

Methanol

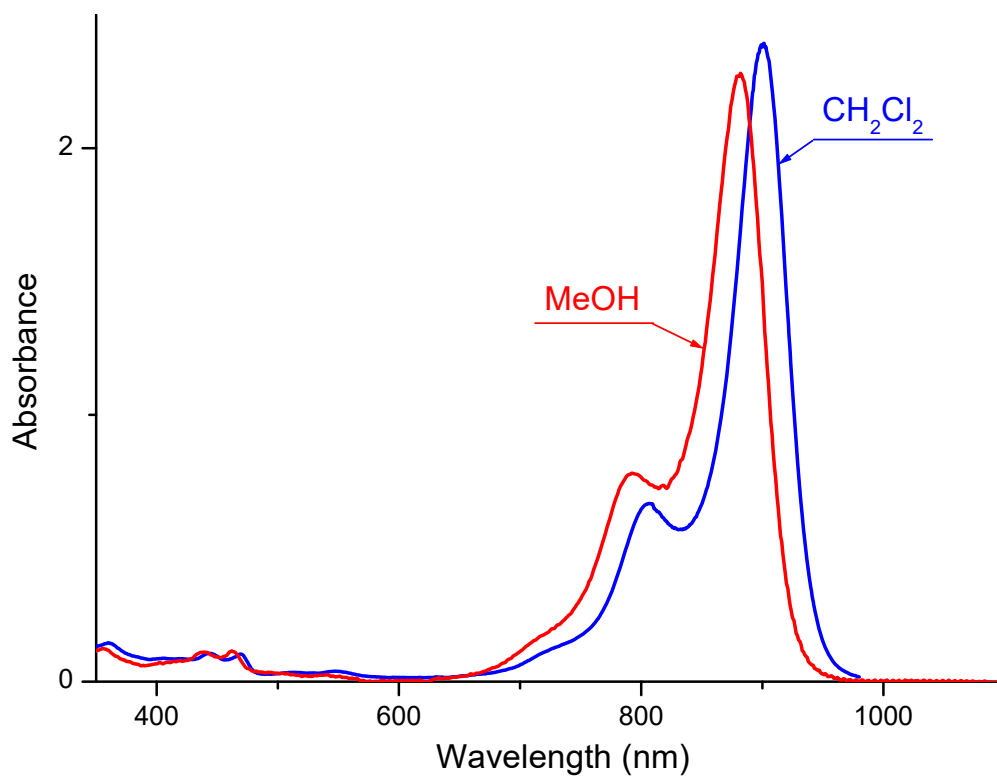
882 nm 228000 M-1 cm-1

Emission

nm

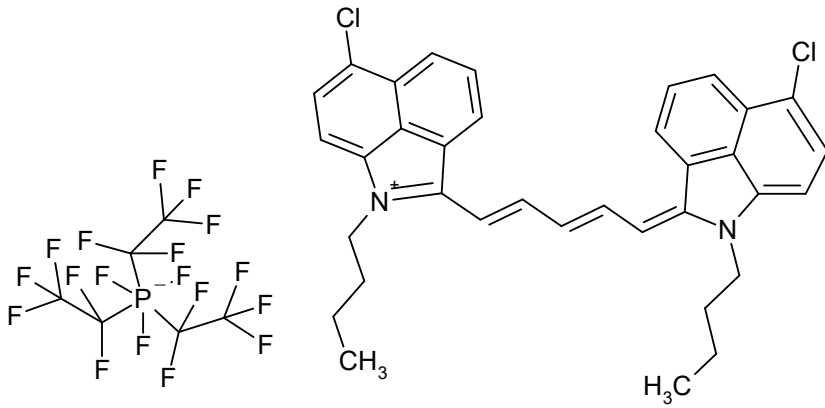
C₃₅H₃₃BCl₂F₄N₂

639.3773



S09425

CAS #



Absorption

Methylene chloride

902 nm 294100 M-1 cm-1

nm

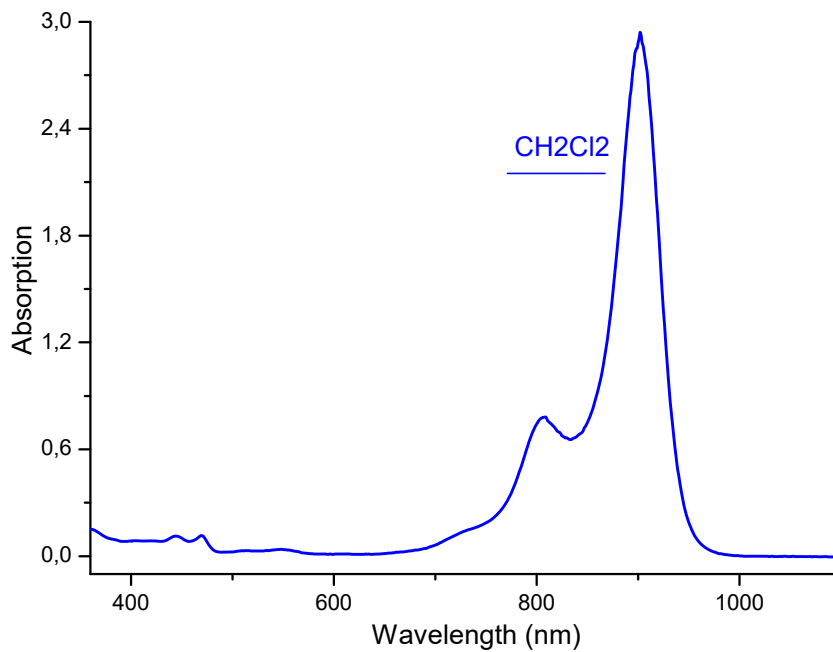
M-1 cm-1

Emission

nm

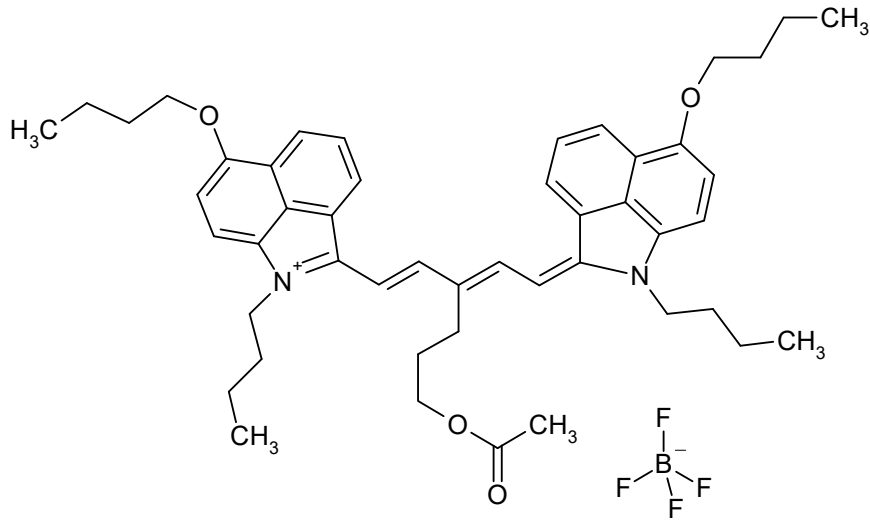
C₄₁H₃₃Cl₂F₁₈N₂P

997.5846



S06159

CAS #



Absorption

Methanol

911

nm

M-1 cm-1

Methylene chloride

930

nm

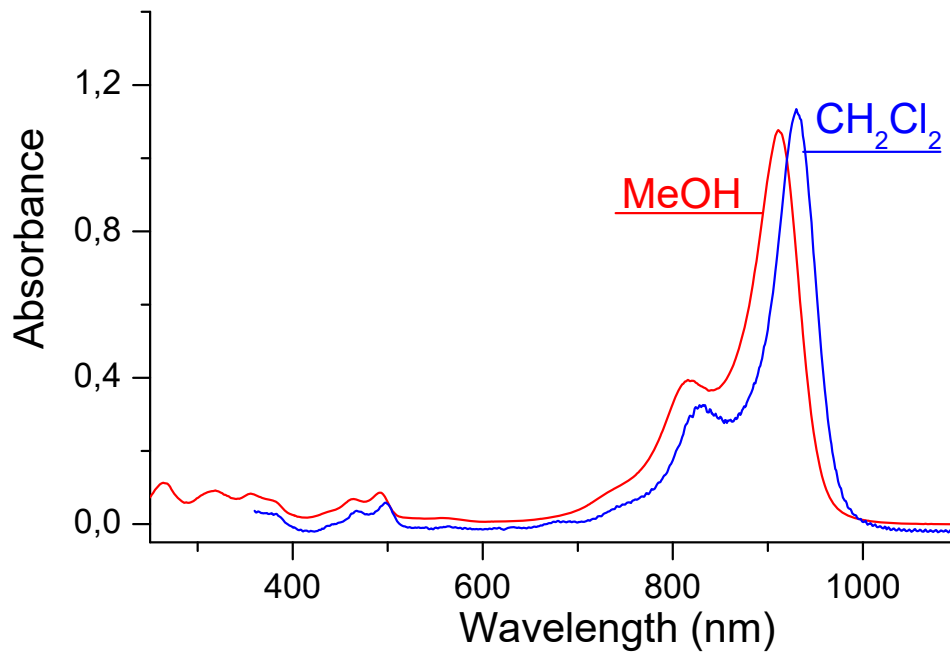
M-1 cm-1

Emission

nm

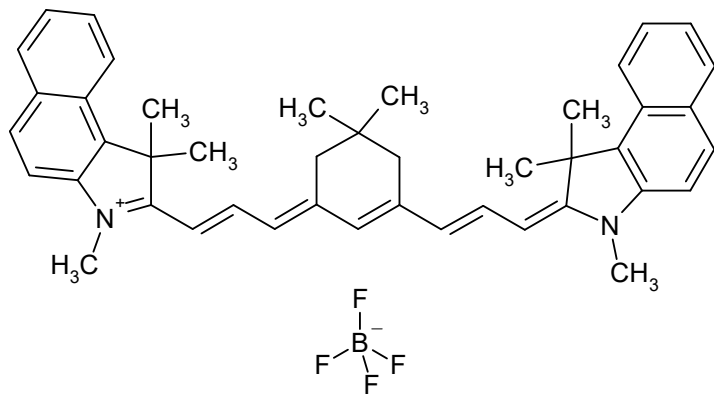
C₄₈H₅₉BF₄N₂O₄

814.8210



S01984

CAS #



Absorption

Methylene chloride

912 nm 331000 M-1 cm-1

Methanol

894 nm 216700 M-1 cm-1

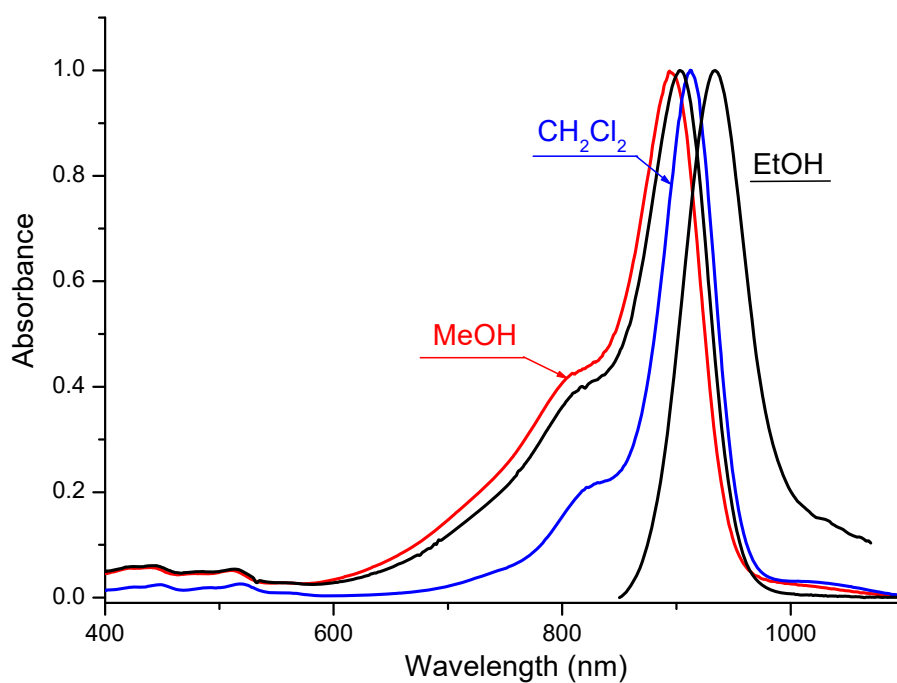
Emission

Ethanol

935 nm

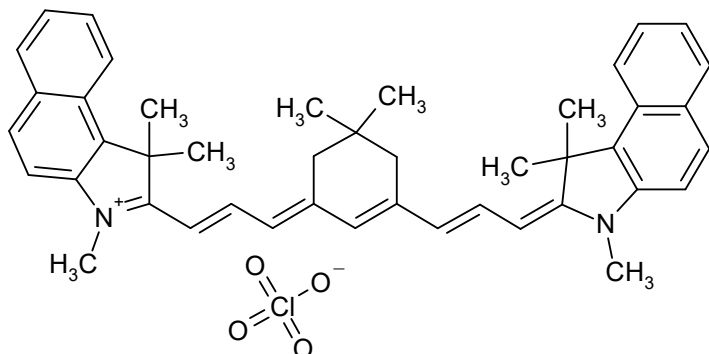
C₄₄H₄₇BF₄N₂

690.6832



S01178

CAS #
185518-02-9



Absorption

Methylene chloride

912 nm 331000 M-1 cm-1

Methanol

894 nm 216700 M-1 cm-1

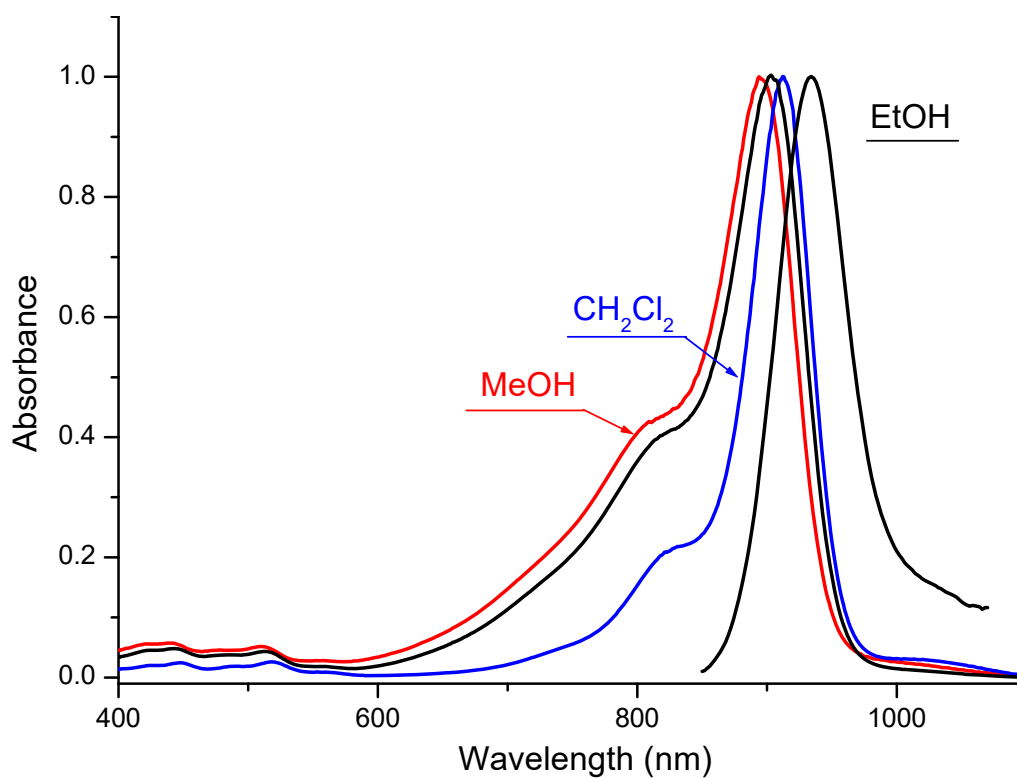
Emission

Ethanol

934 nm

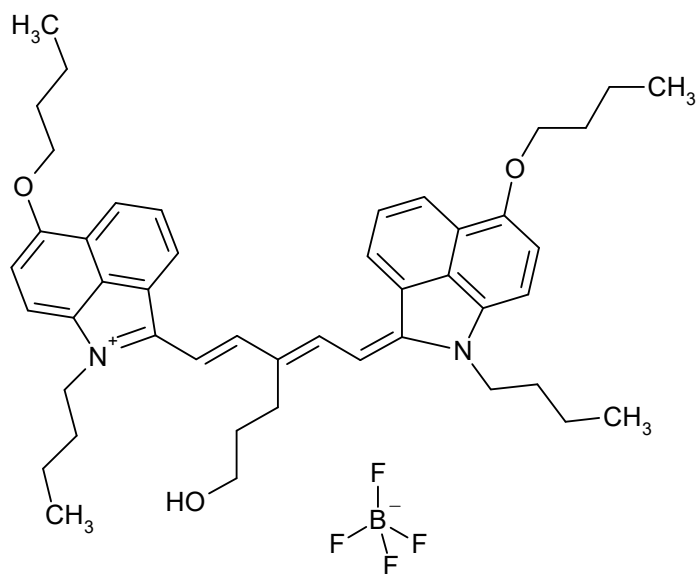
C₄₄H₄₇ClN₂O₄

703.3292



S06158

CAS #



Absorption

Methanol

915

nm

M-1 cm-1

Methylene chloride

934

nm

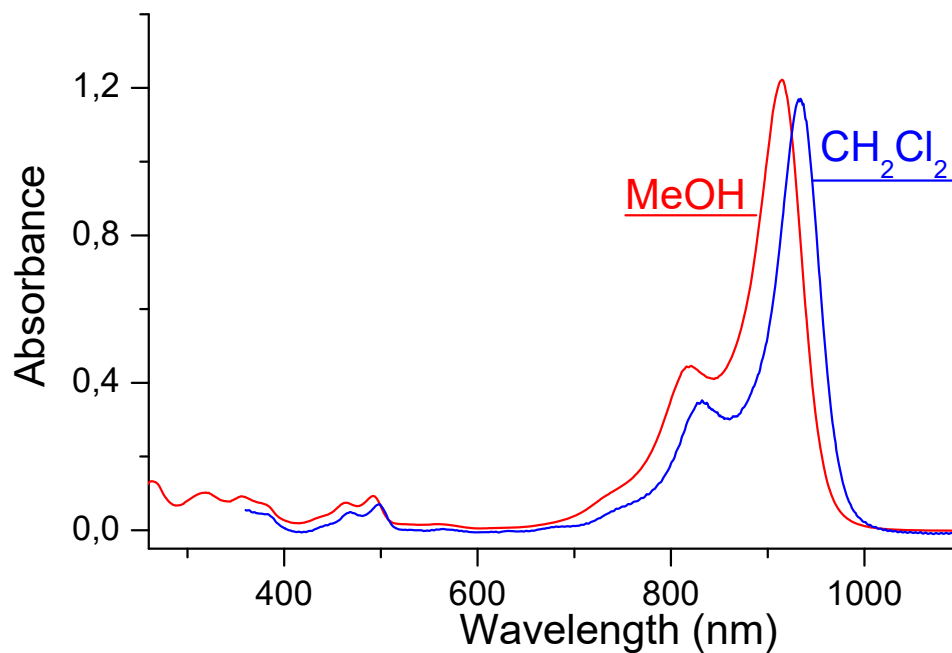
M-1 cm-1

Emission

nm

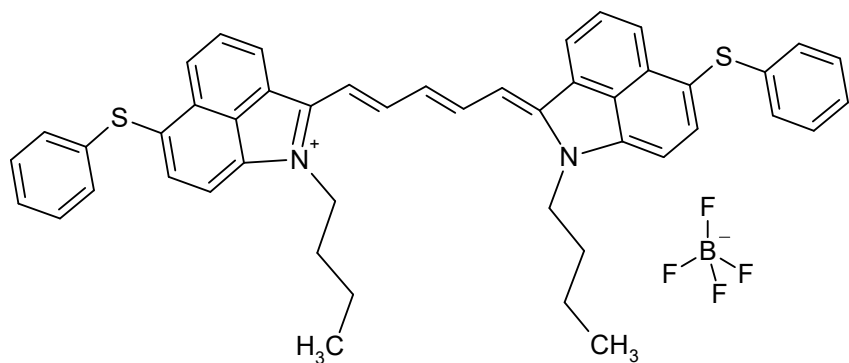
C₄₆H₅₇BF₄N₂O₃

772.7834



S01975

CAS #



Absorption

Methylene chloride

920 nm 188000 M-1 cm-1

Methanol

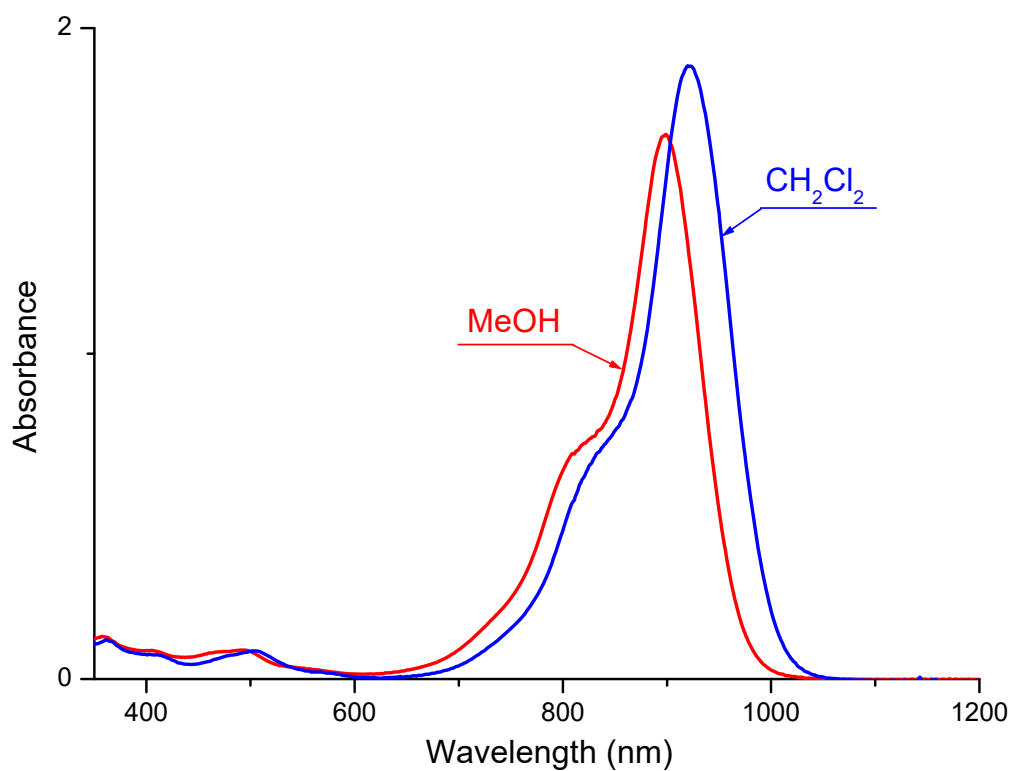
898 nm 167300 M-1 cm-1

Emission

nm

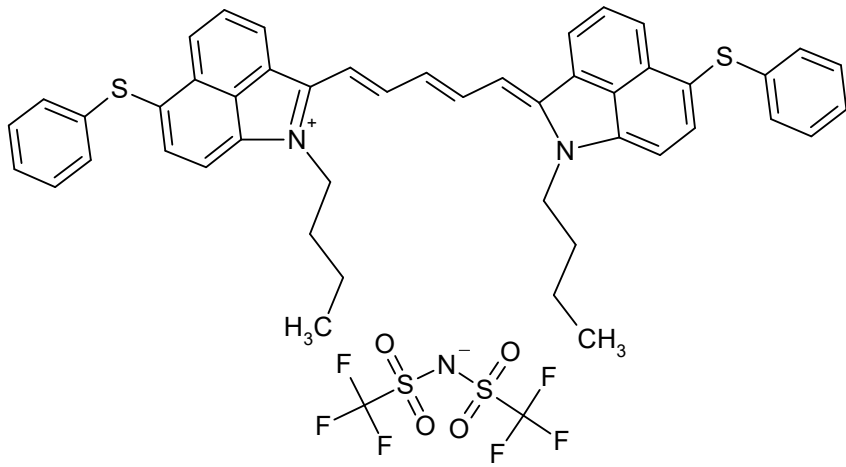
C₄₇H₄₃BF₄N₂S₂

786.8128



S09461

CAS #



Absorption

Methylene chloride

920

nm

M-1 cm-1

nm

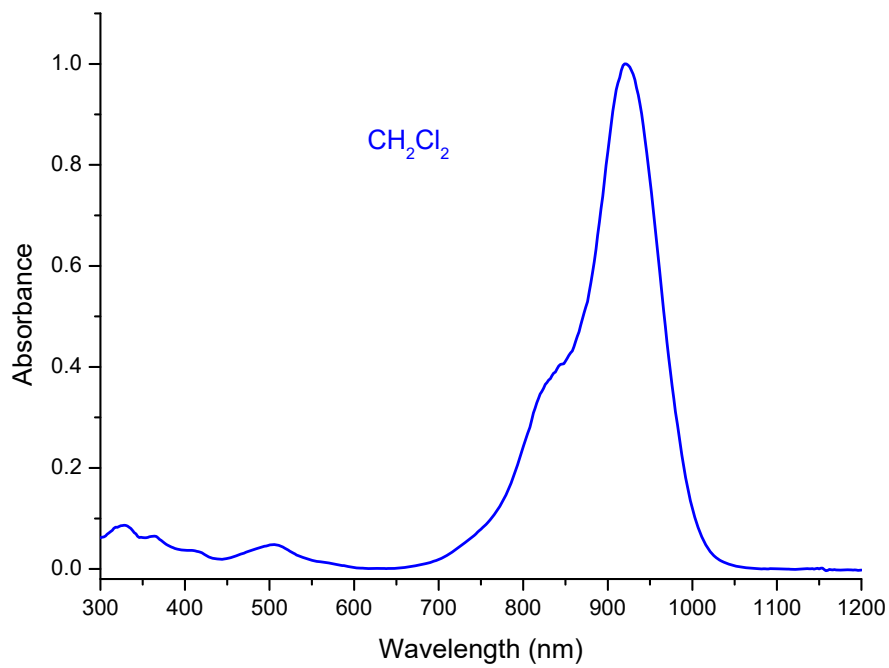
M-1 cm-1

Emission

nm

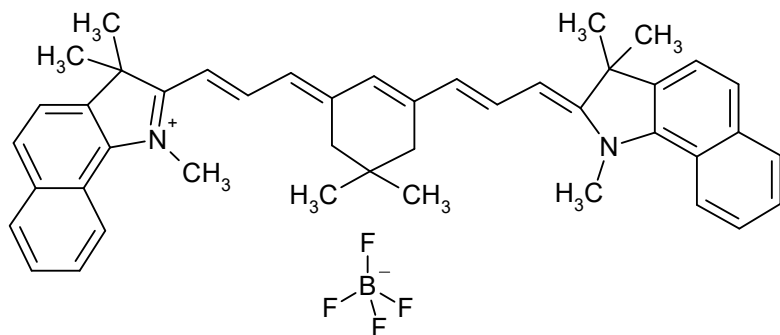
C₄₉H₄₃F₆N₃O₄S₄

980.1532



S01985

CAS #



Absorption

Methylene chloride

921 nm 327400 M-1 cm-1

Methanol

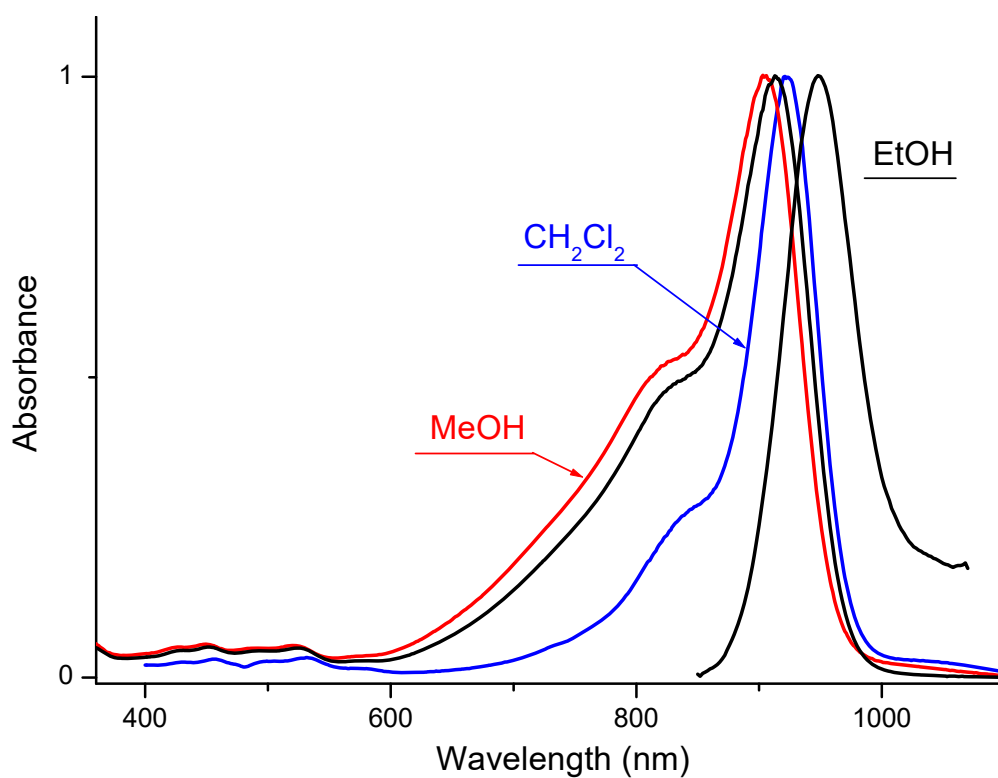
903 nm 190500 M-1 cm-1

Emission

948 nm

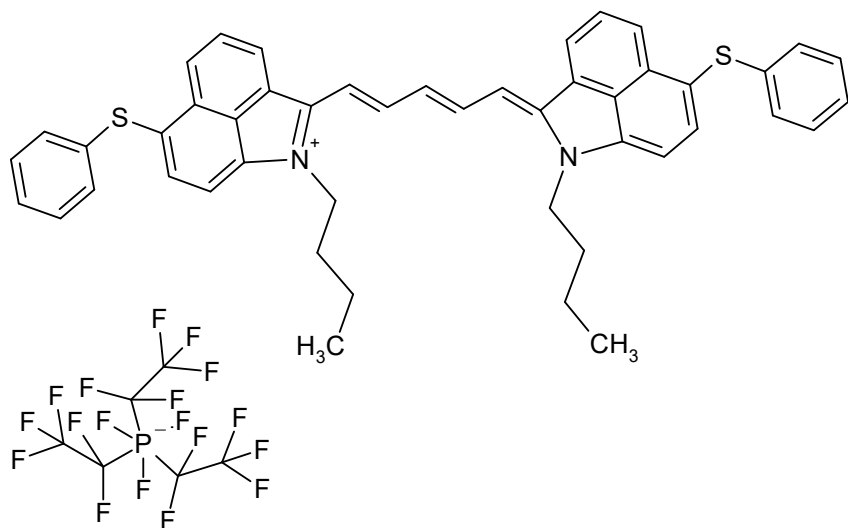
C₄₄H₄₇BF₄N₂

690.6832



S08733

CAS #



Absorption

Methylene chloride

923

nm

M-1 cm-1

nm

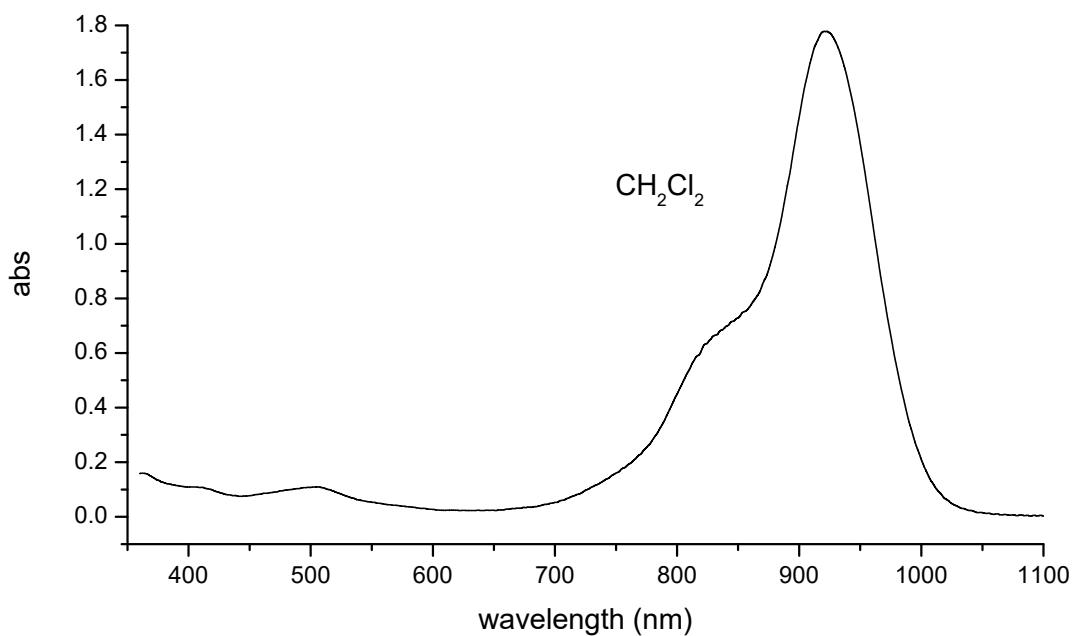
M-1 cm-1

Emission

nm

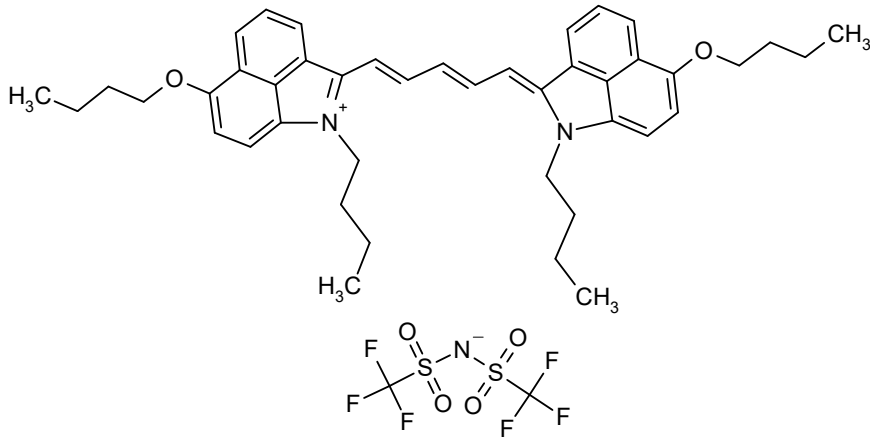
C₅₃H₄₃F₁₈N₂PS₂

1145.0201



S08319

CAS #



Absorption

Methylene chloride

936

nm

M-1 cm-1

nm

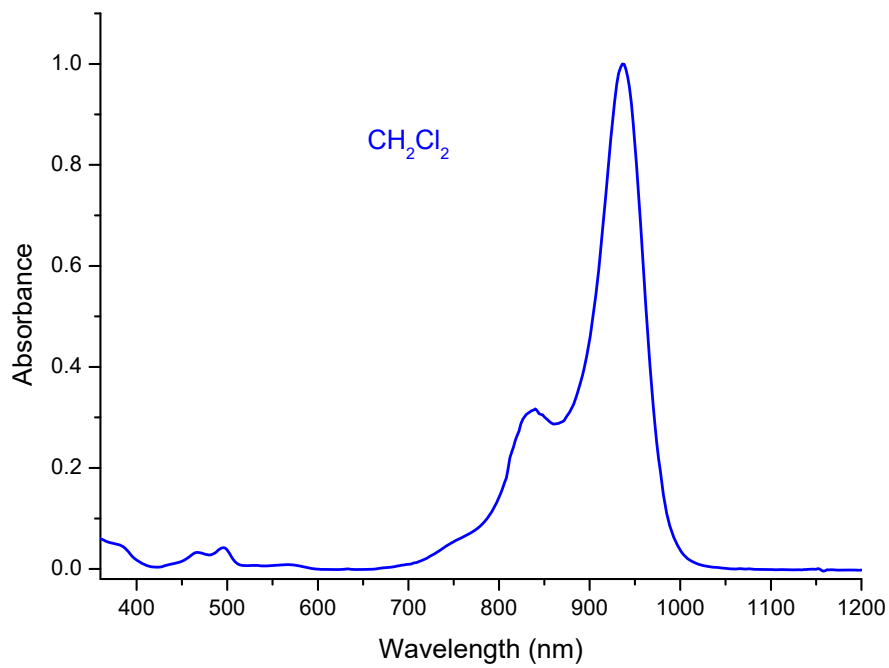
M-1 cm-1

Emission

nm

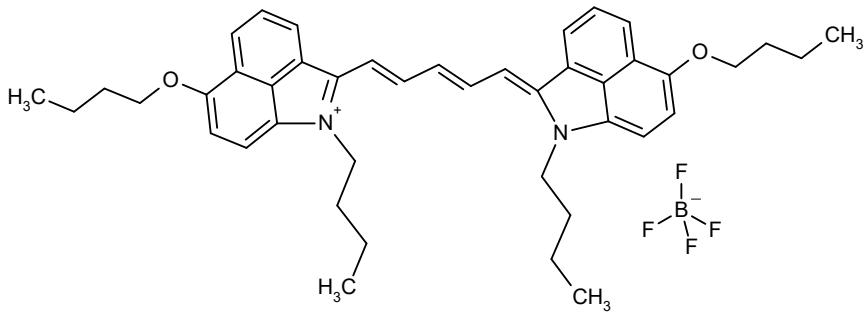
$\text{C}_{45}\text{H}_{51}\text{F}_6\text{N}_3\text{O}_6\text{S}_2$

908.0431



S01967

CAS #



Absorption

Methylene chloride

937 nm 240000 M-1 cm-1

Methanol

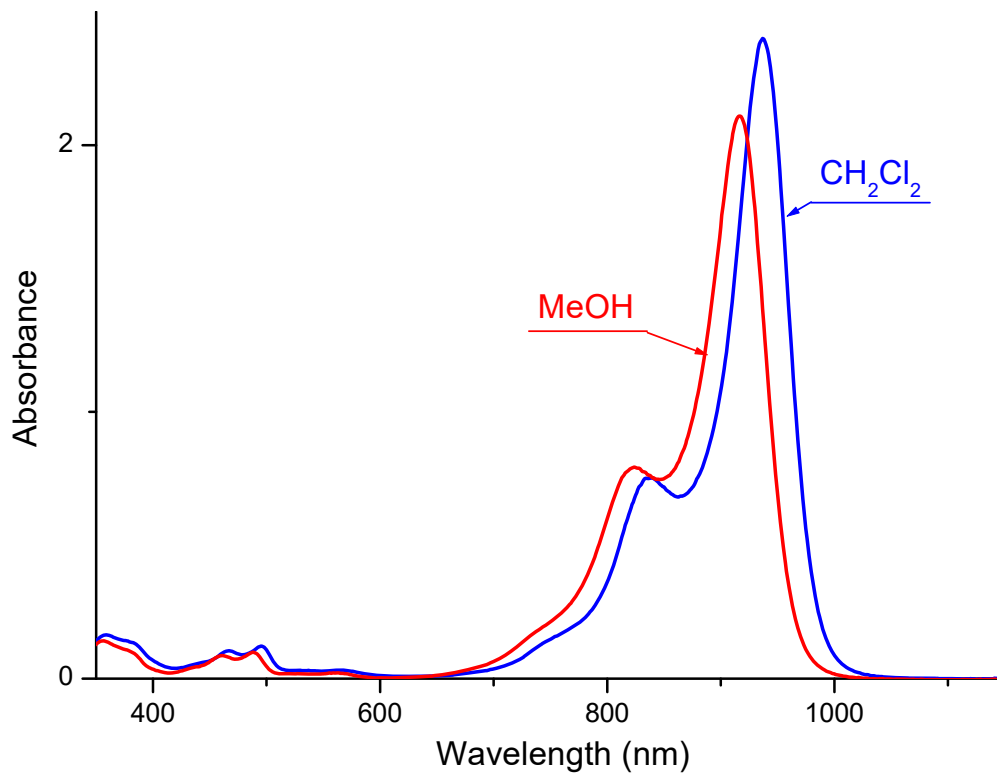
917 nm 210900 M-1 cm-1

Emission

nm

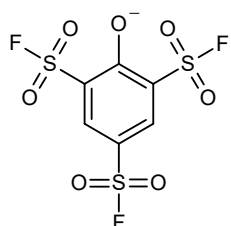
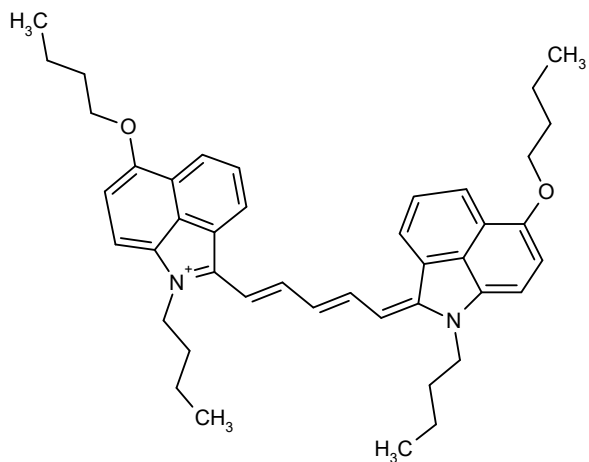
C₄₃H₅₁BF₄N₂O₂

714.7027



S11629

CAS #



Absorption

Methylene chloride

937

nm

M-1 cm-1

nm

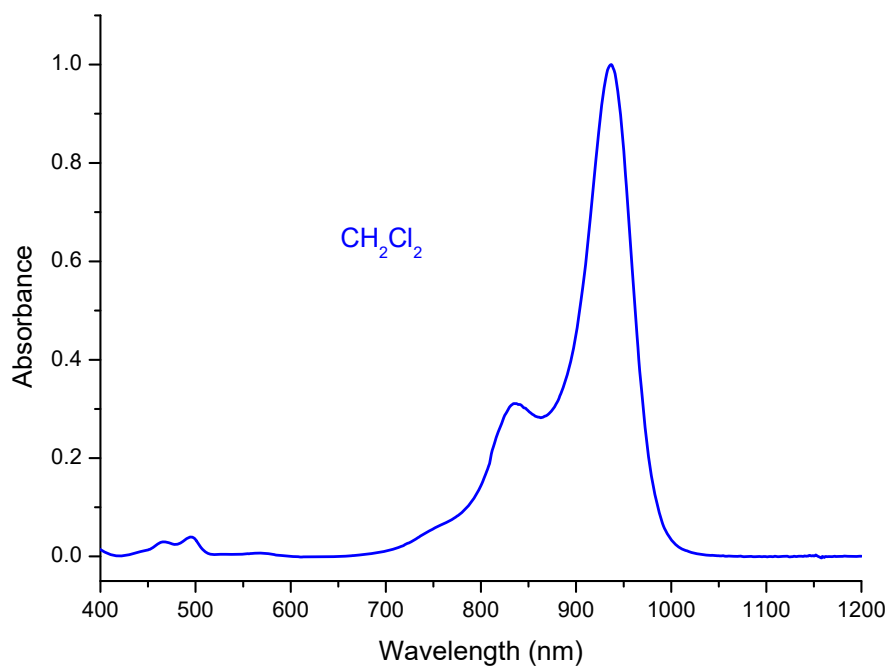
M-1 cm-1

Emission

nm

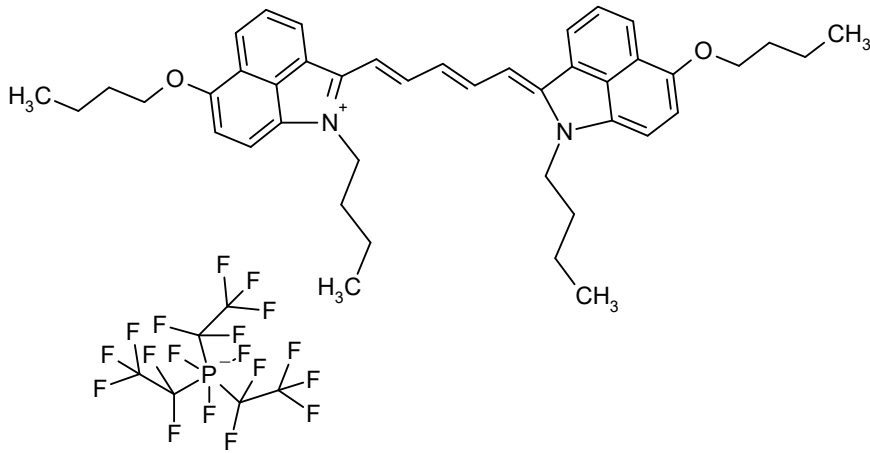
C₄₉H₅₃F₃N₂O₉S₃

967.1640



S08732

CAS #



Absorption

Methylene chloride

938 nm 220000 M-1 cm-1

nm

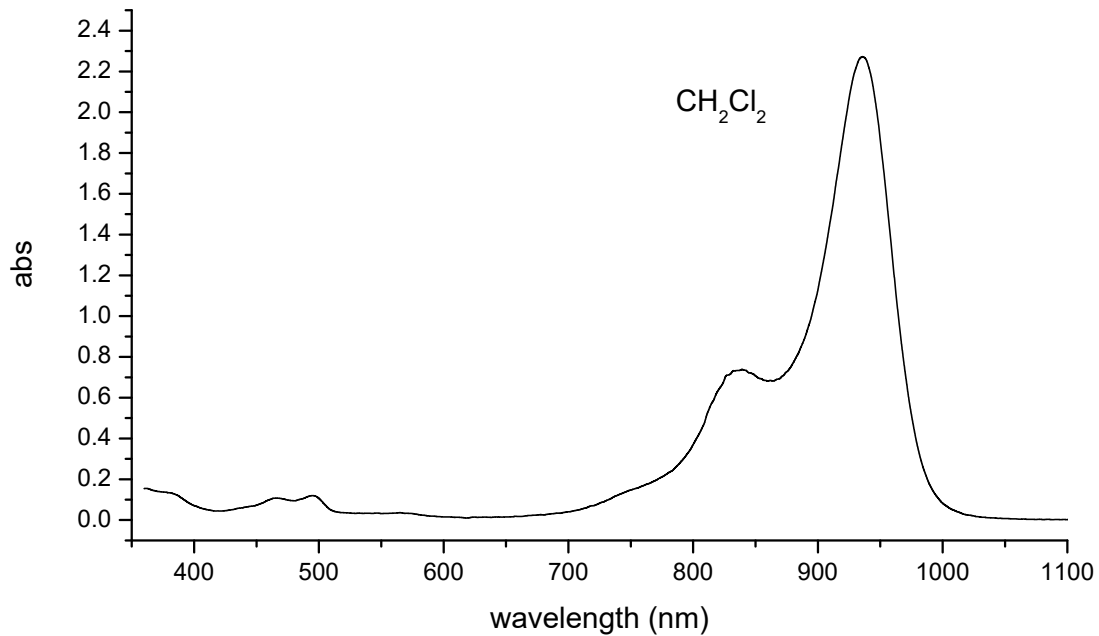
M-1 cm-1

Emission

nm

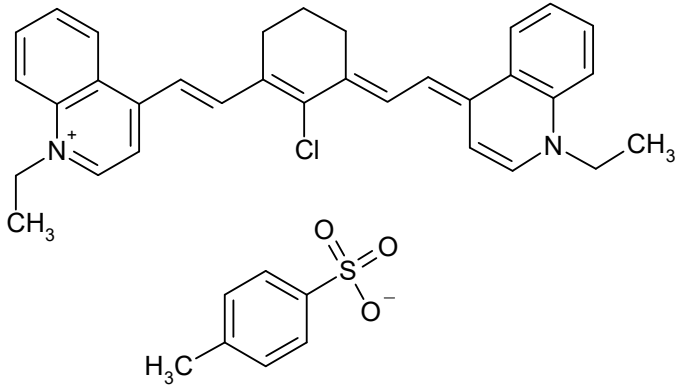
C₄₉H₅₁F₁₈N₂O₂P

1072.9100



S01259

CAS #
155998-77-9



Absorption

Methylene chloride

986 nm 260000 M-1 cm-1

Methanol

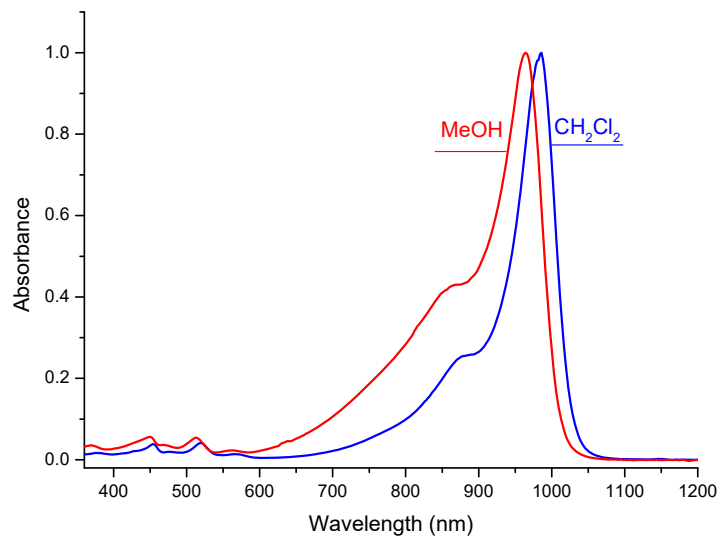
964 nm M-1 cm-1

Emission

nm

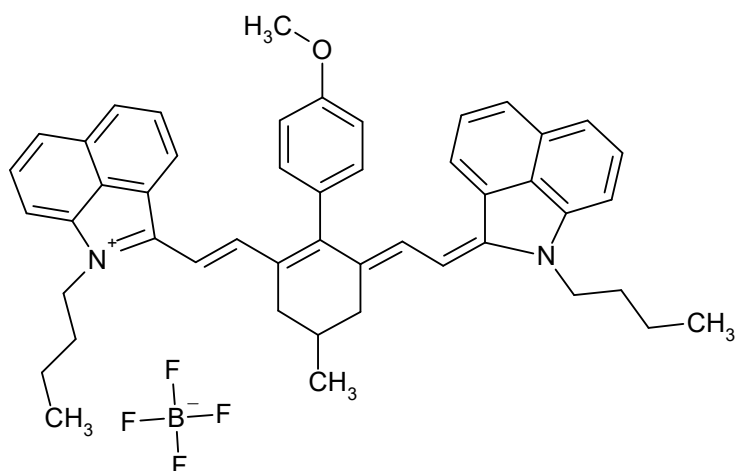
C₃₉H₃₉ClN₂O₃S

651.2743



S01445

CAS #



Absorption

Methanol			
992	nm	218000	M-1 cm-1

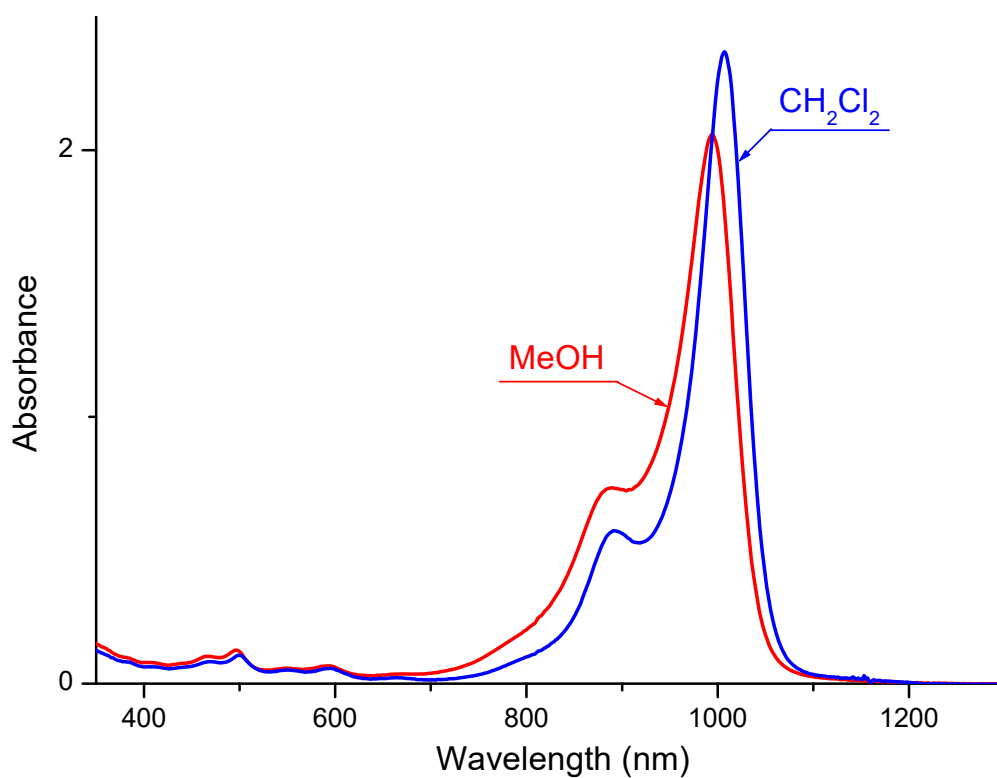
Methylene chloride			
1007	nm	231000	M-1 cm-1

Emission

nm

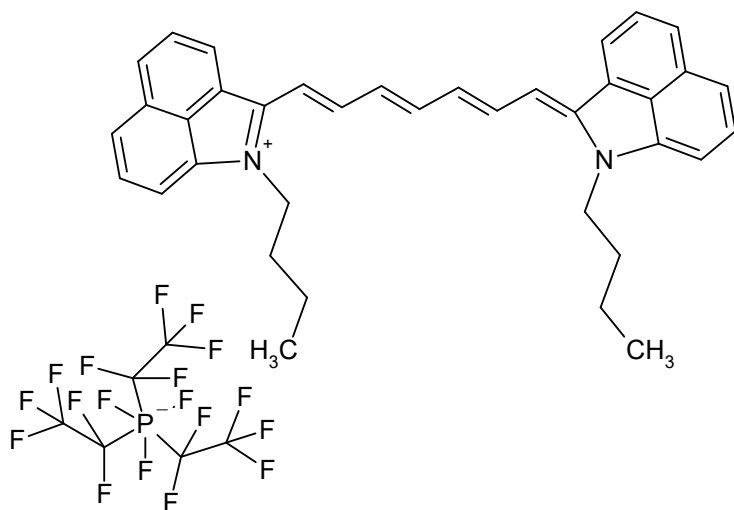
$C_{48}H_{49}BF_4N_2O$

756.7431



S09427

CAS #



Absorption

Methylene chloride

994 nm 305500 M-1 cm-1

nm

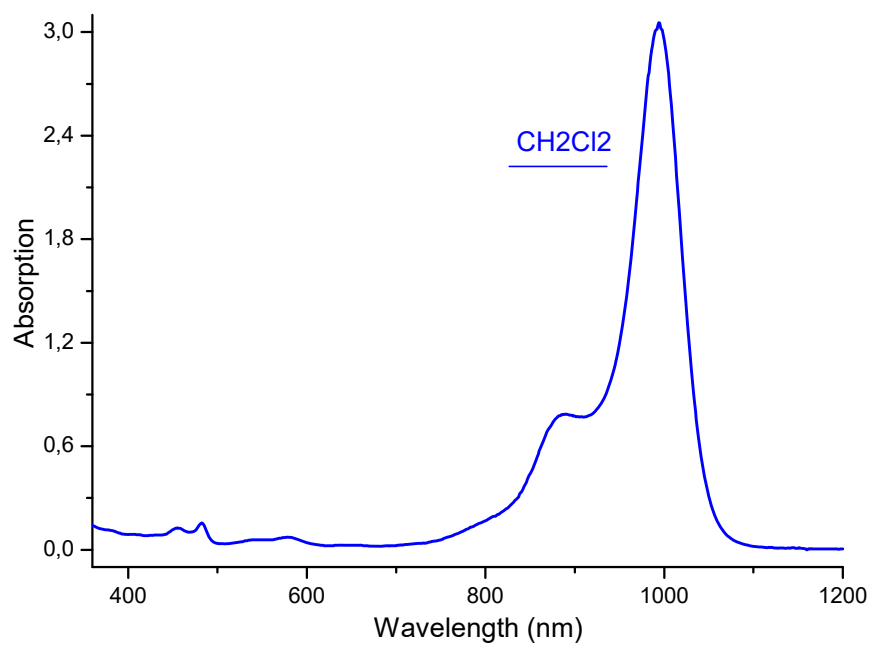
M-1 cm-1

Emission

nm

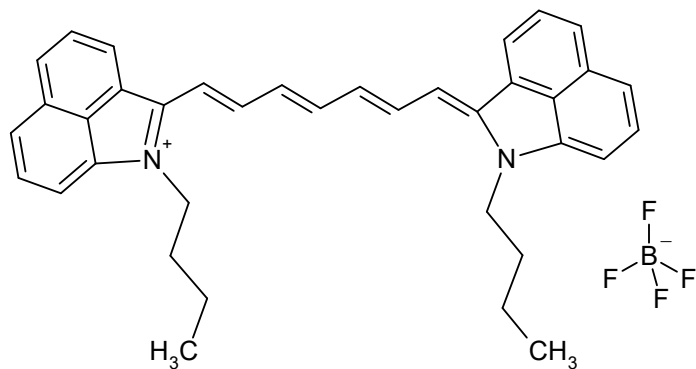
$C_{43}H_{37}F_{18}N_2P$

954.7327



S01966

CAS #



Absorption

Methylene chloride

995 nm 283100 M-1 cm-1

Methanol

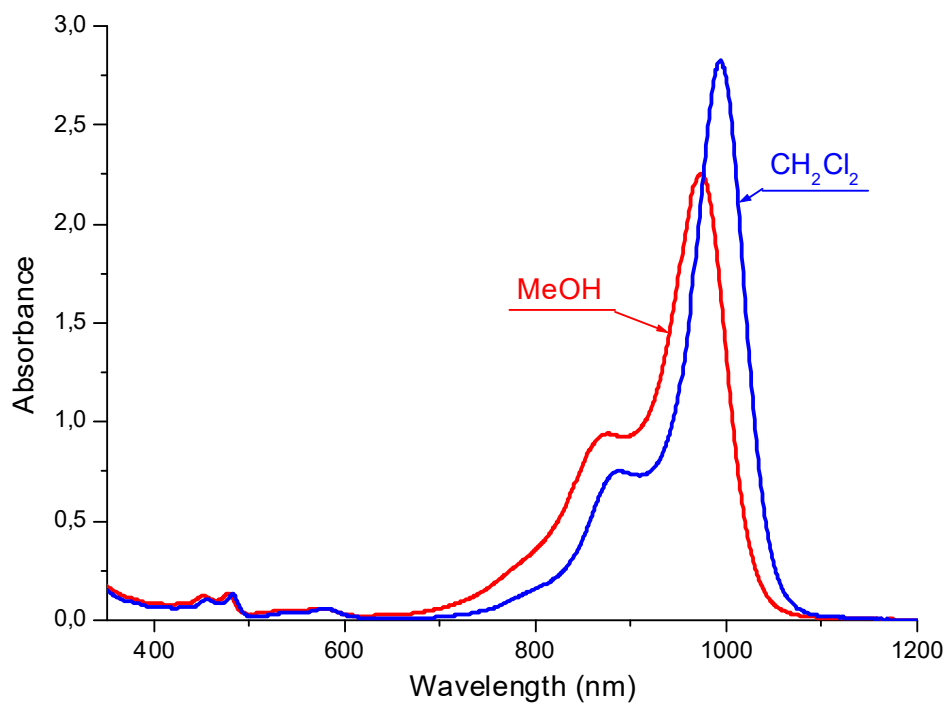
974 nm 225600 M-1 cm-1

Emission

nm

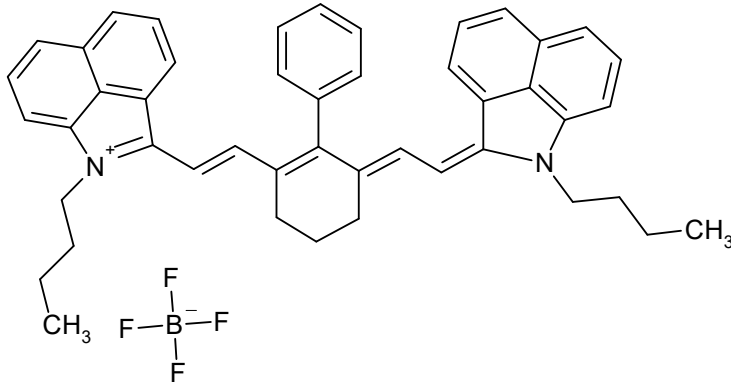
$\text{C}_{37}\text{H}_{37}\text{BF}_4\text{N}_2$

596.5254



S01446

CAS #



Absorption

Methanol

998 nm 222000 M-1 cm-1

nm

M-1 cm-1

Emission

nm

$C_{46}H_{45}BF_4N_2$

712.6896

