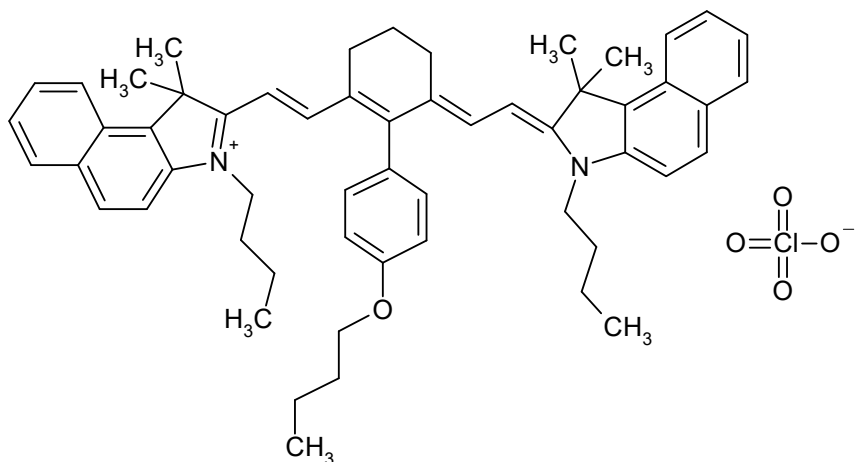


S01978

CAS #



Absorption

Methylene chloride

803 nm 344000 M-1 cm-1

Methanol

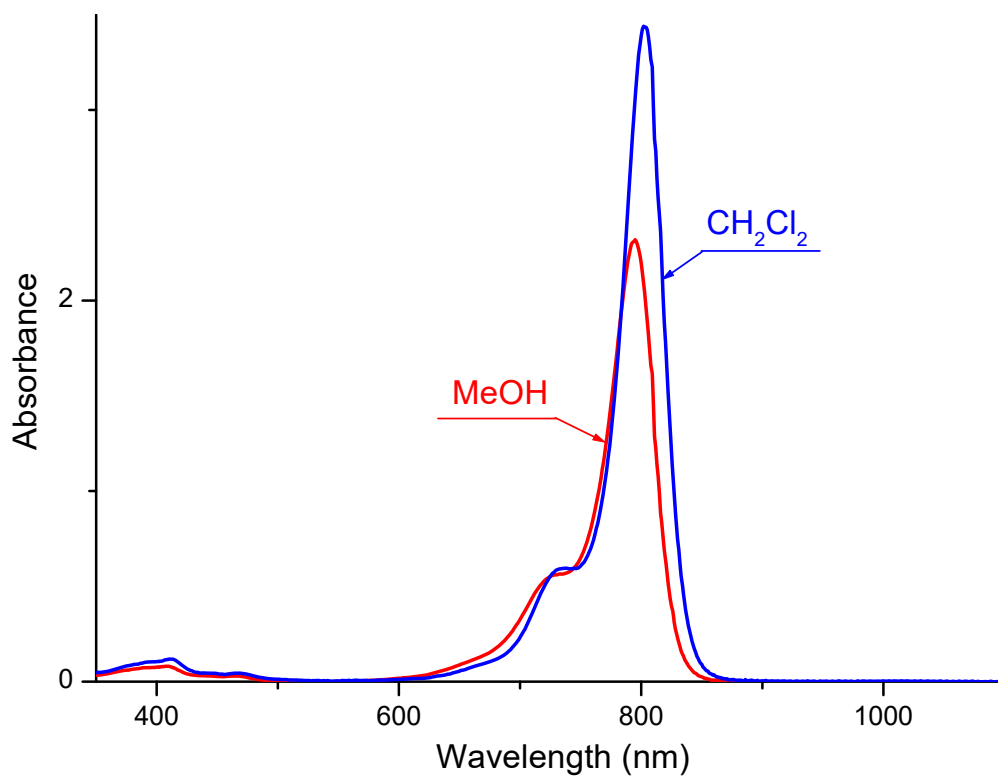
795 nm 302000 M-1 cm-1

Emission

nm

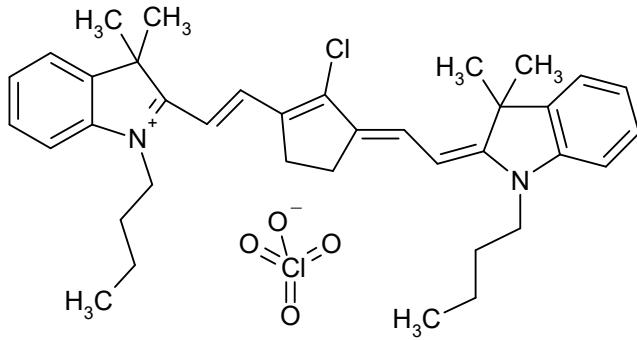
C₅₆H₆₅ClN₂O₅

881.6059



S01642

CAS #



Absorption

Methanol

807 nm 271000 M-1 cm-1

nm

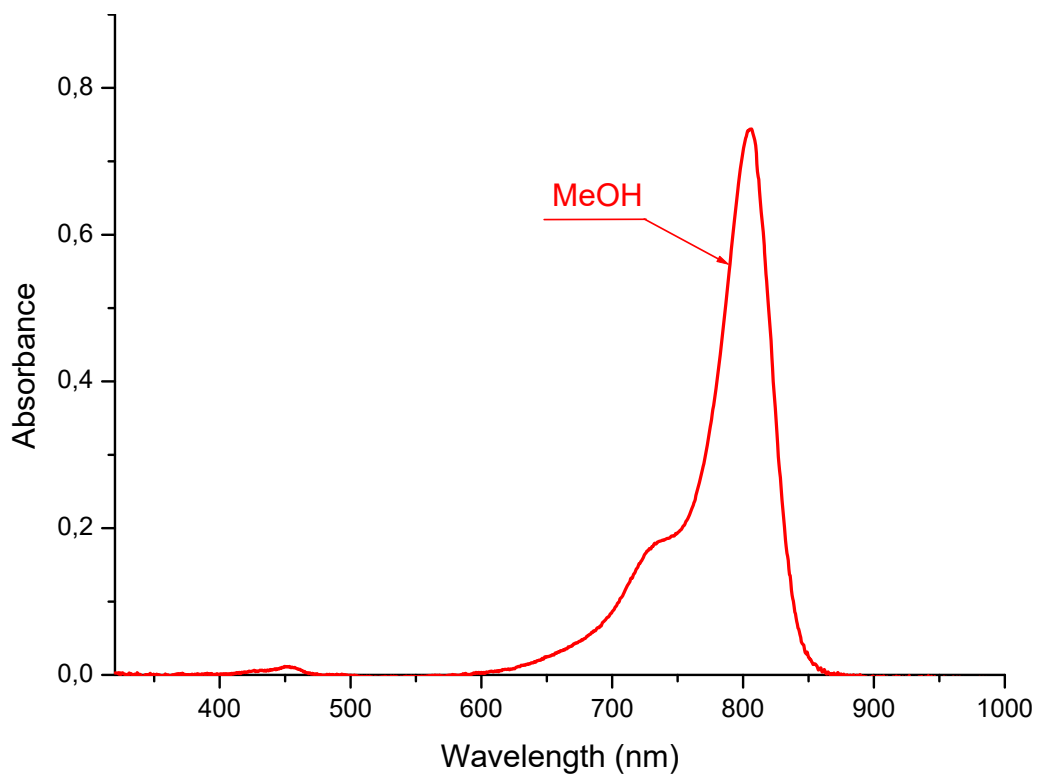
M-1 cm-1

Emission

nm

C₃₇H₄₆Cl₂N₂O₄

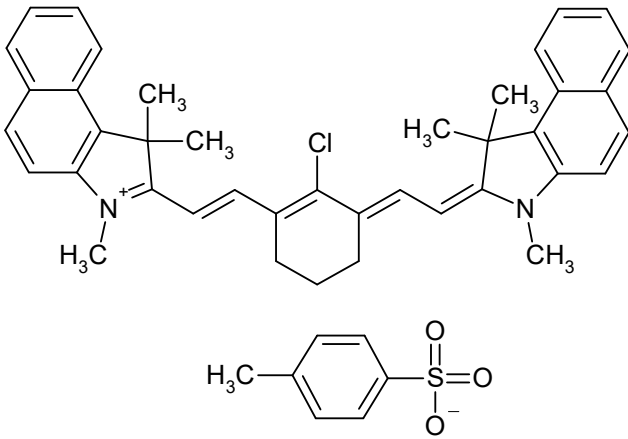
653.6962



D00646

CAS #
134127-48-3

IR-813 tosylate



Absorption

Methanol

814 nm 239000 M-1 cm-1

nm

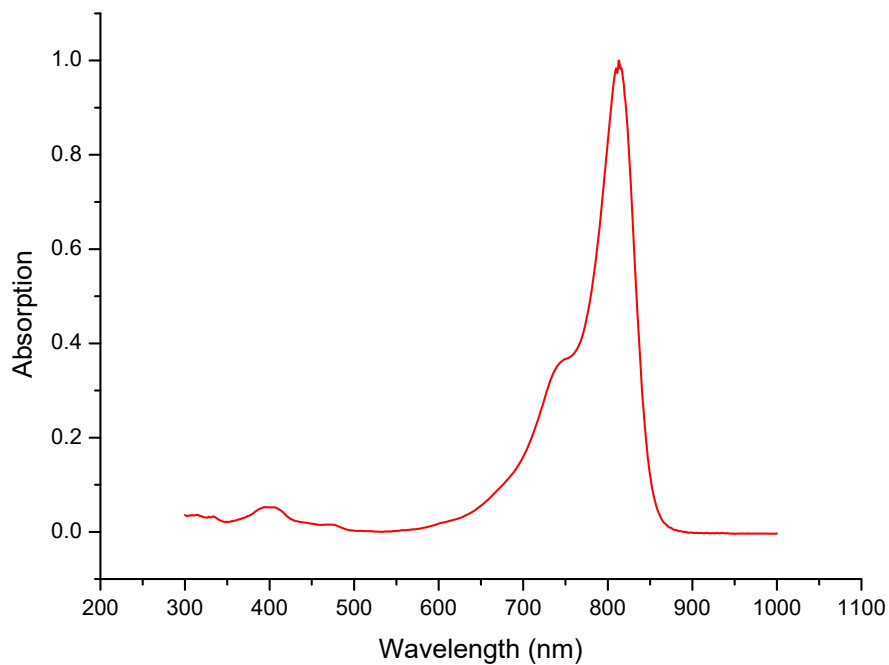
M-1 cm-1

Emission

nm

C₄₇H₄₇ClN₂O₃S

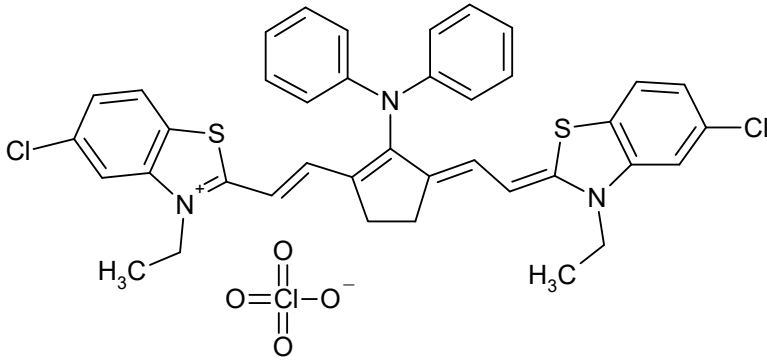
755.4272



S00218

CAS #
53655-17-7

IR-140



Absorption

	DMSO		
823	nm	150000	M-1 cm-1

Ethanol

806	nm		M-1 cm-1
------------	----	--	----------

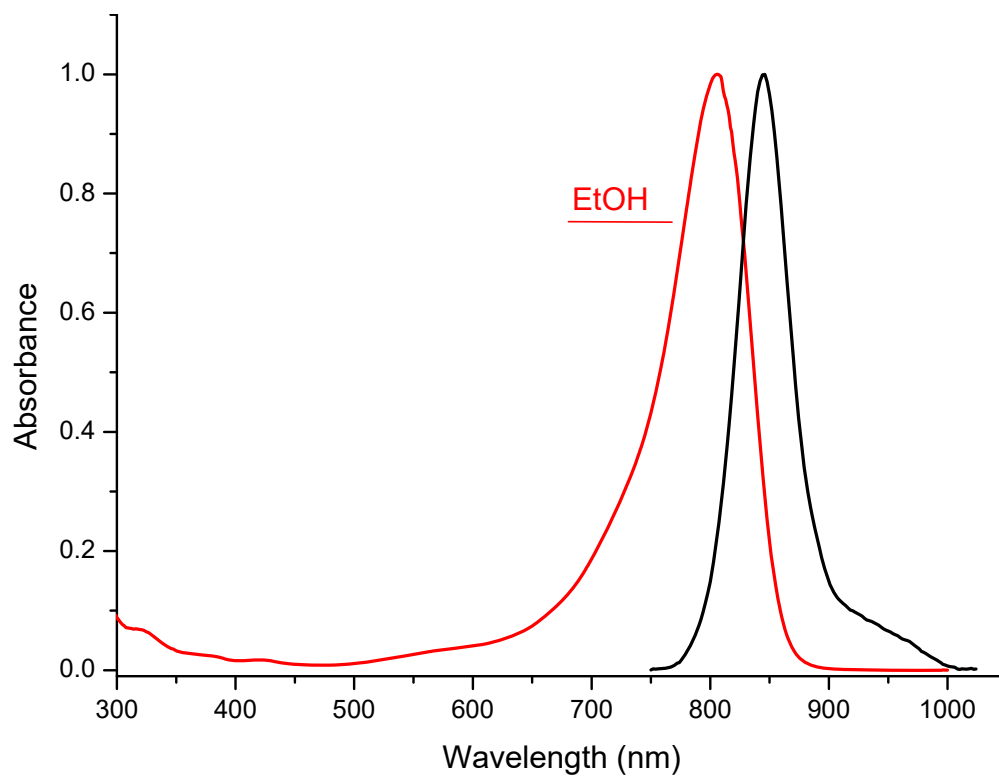
Emission

Ethanol

845 nm

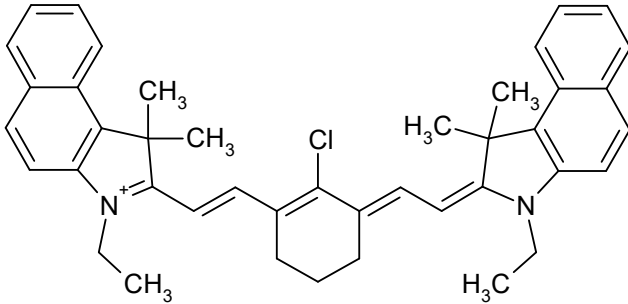
C₃₉H₃₄Cl₃N₃O₄S₂

779.2105



S01982

CAS #



Absorption

Methylene chloride

824 nm 322000 M-1 cm-1

Methanol

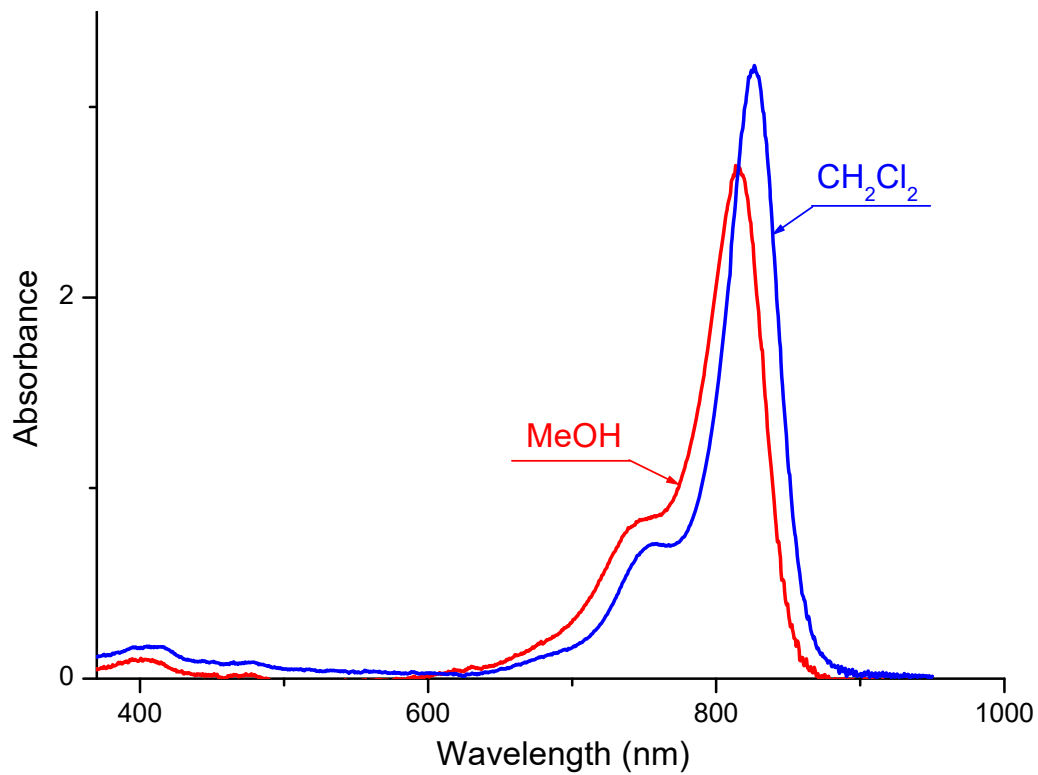
814 nm 269900 M-1 cm-1

Emission

nm

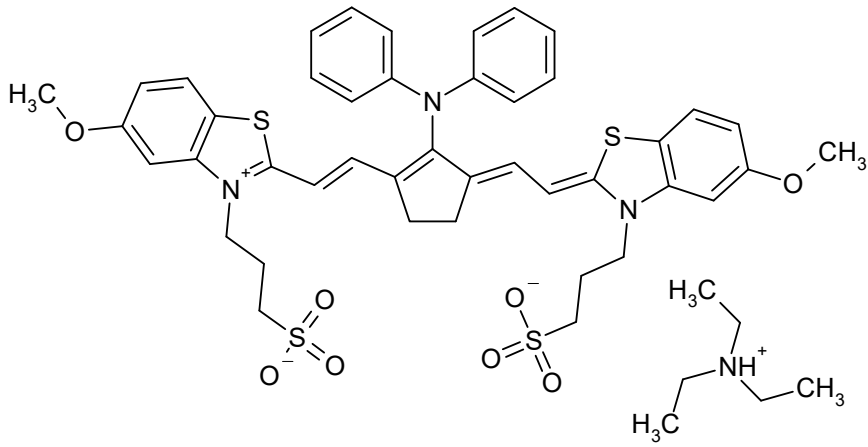
C₄₂H₄₄BClF₄N₂

699.0900



S01371

CAS #



Absorption

Methanol

824

nm

212000

M-1 cm-1

nm

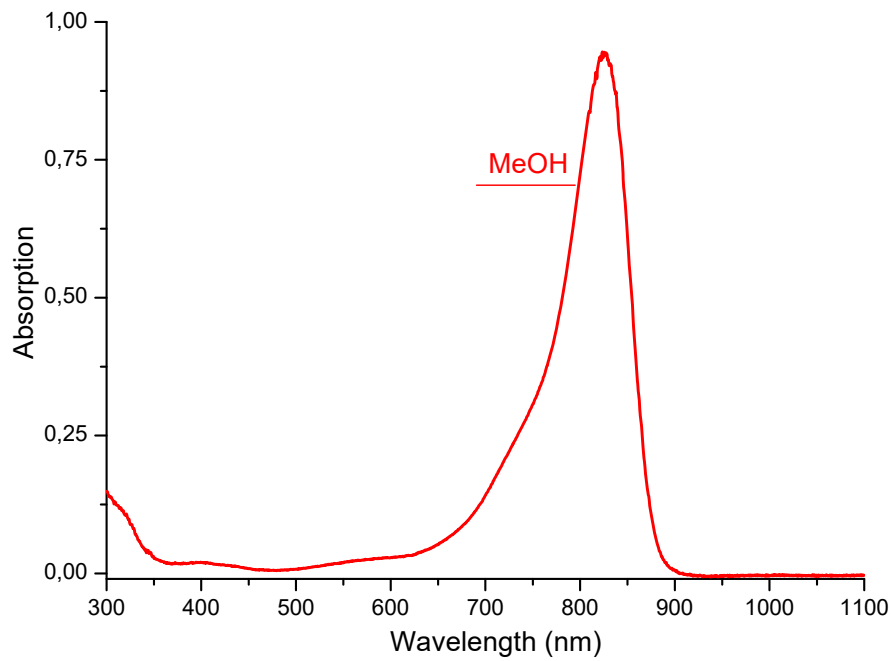
M-1 cm-1

Emission

nm

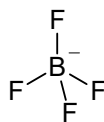
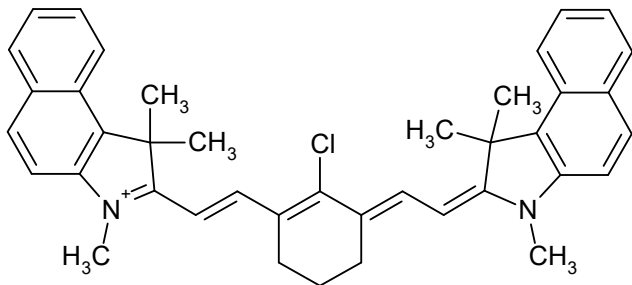
C₄₉H₅₈N₄O₈S₄

959.2866



S01441

CAS #



Absorption

Methylene chloride

826 nm 320500 M-1 cm-1

Methanol

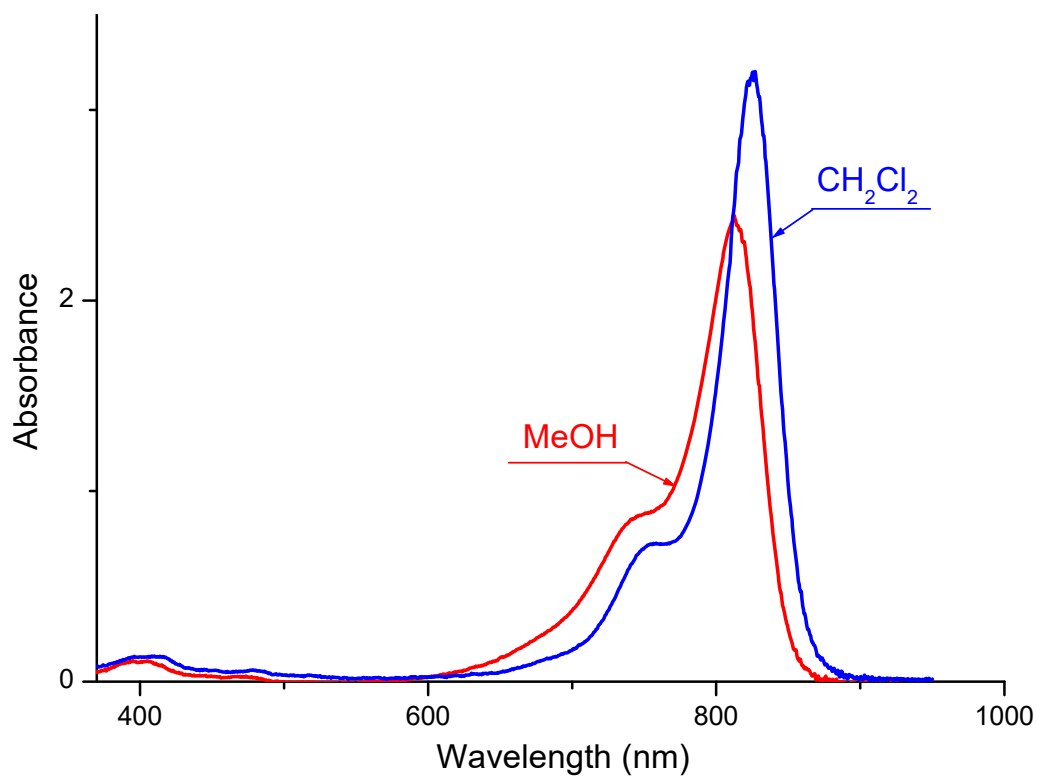
813 nm 244800 M-1 cm-1

Emission

nm

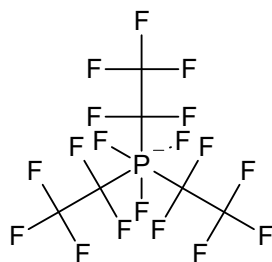
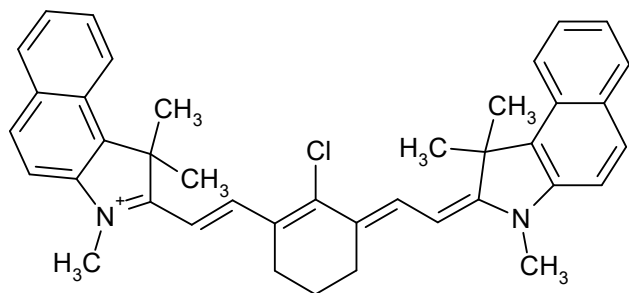
C₄₀H₄₀BClF₄N₂

671.0358



S10755

CAS #



Absorption

Methylene chloride

826 nm 340000 M-1 cm-1

nm

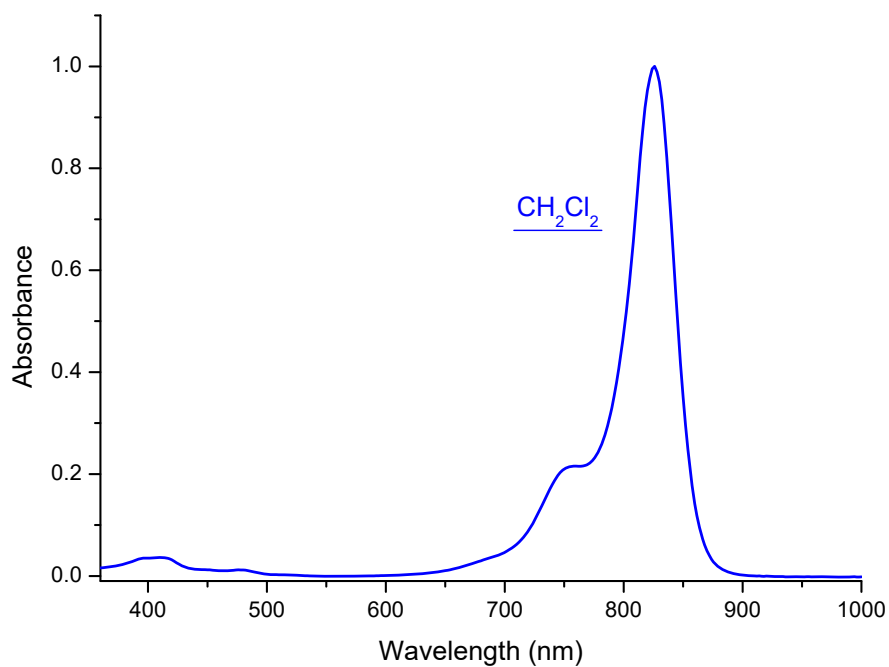
M-1 cm-1

Emission

nm

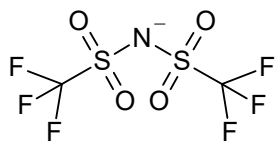
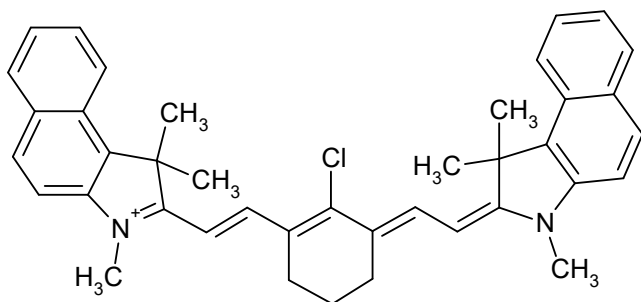
$C_{46}H_{40}ClF_{18}N_2P$

1029.2431



S10756

CAS #



Absorption

Methylene chloride

826 nm 350000 M-1 cm-1

nm

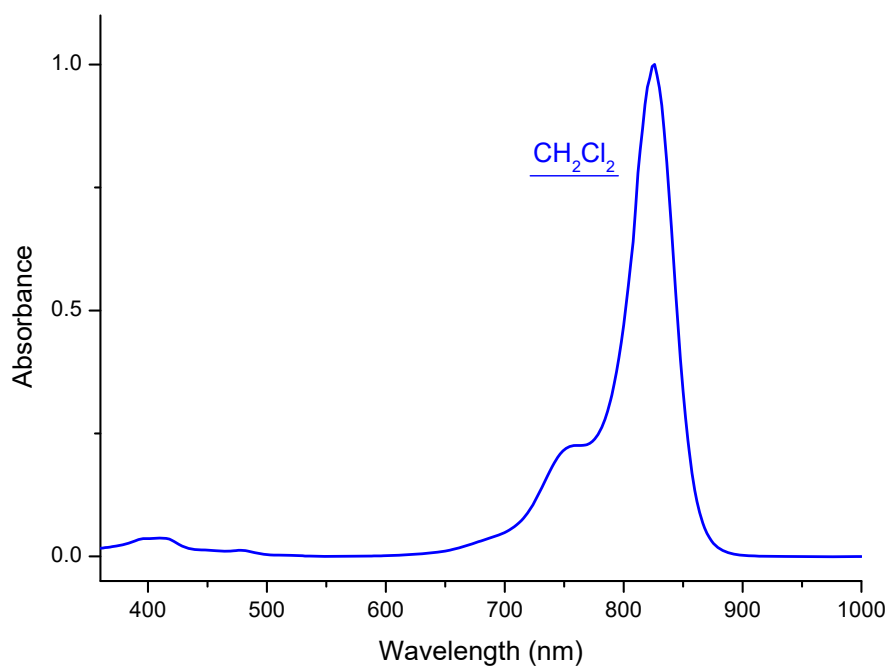
M-1 cm-1

Emission

nm

C₄₂H₄₀ClF₆N₃O₄S₂

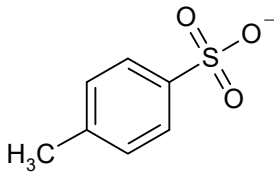
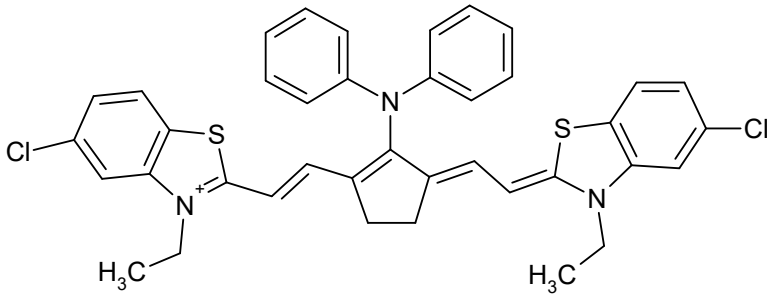
864.3762



S04003

CAS #

IR 140 Tosylate



Absorption

DMSO
827 nm 160000 M-1 cm-1

Ethanol

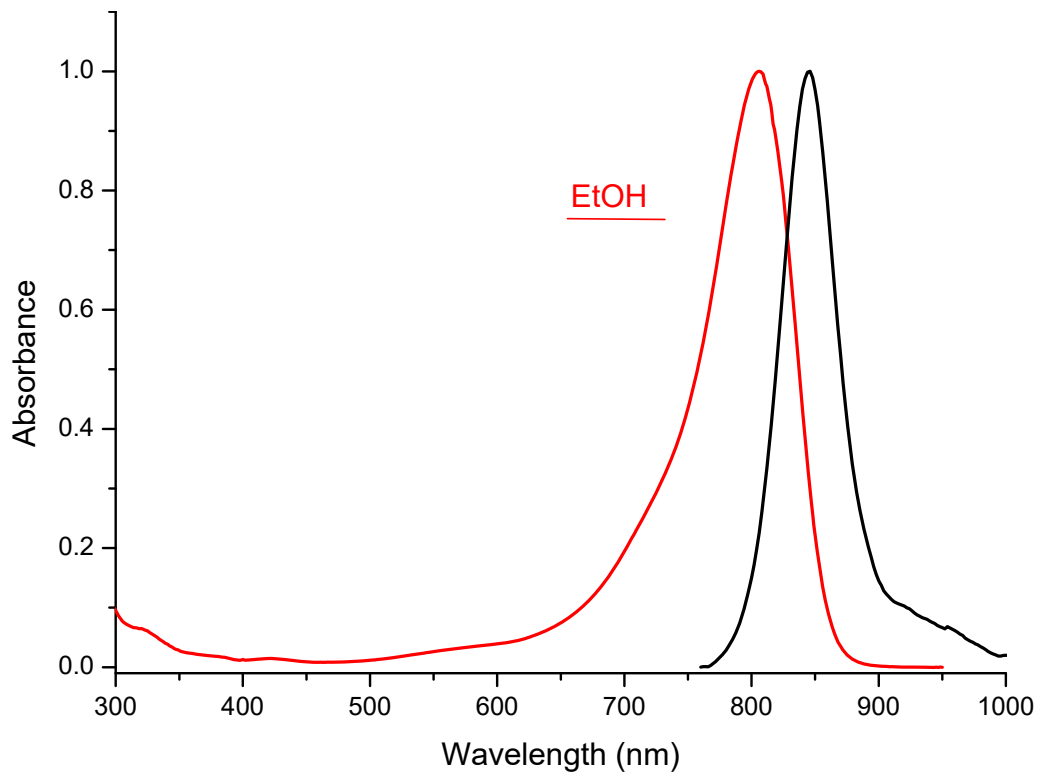
806 nm M-1 cm-1

Emission

Ethanol
845 nm

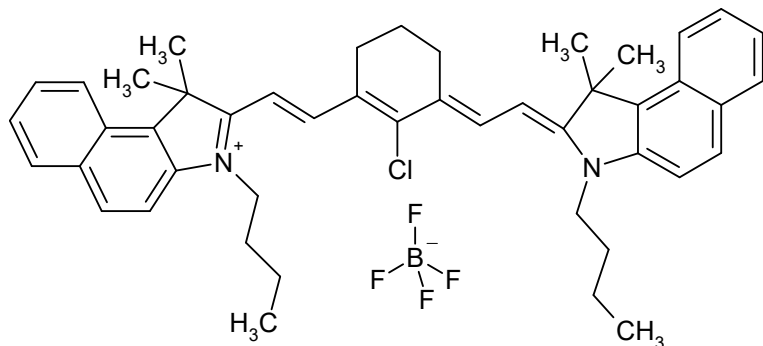
C₄₆H₄₁Cl₂N₃O₃S₃

850.9560



S01979

CAS #



Absorption

Methylene chloride

830 nm 328800 M-1 cm-1

Methanol

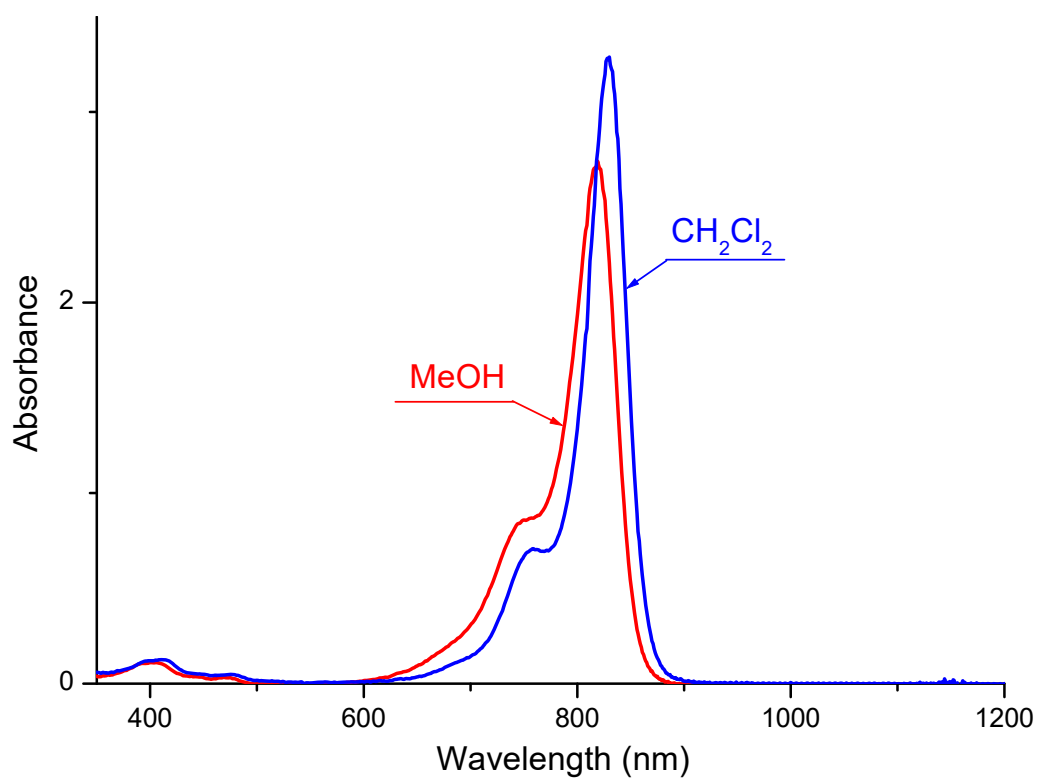
819 nm 274000 M-1 cm-1

Emission

nm

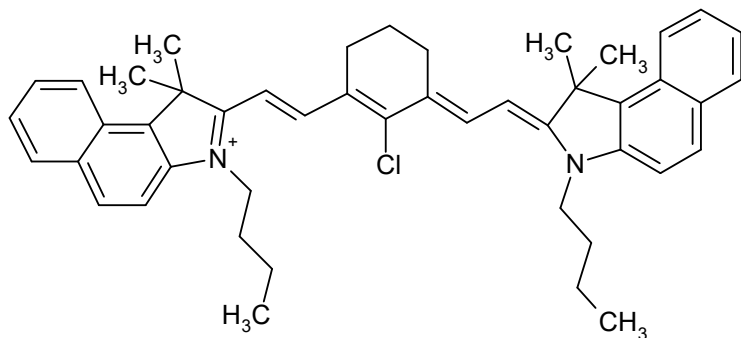
C₄₆H₅₂BClF₄N₂

755.1983



S10757

CAS #



Absorption

Methylene chloride

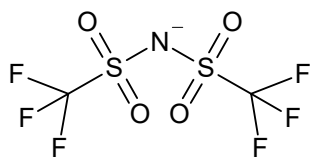
830 nm 350000 M-1 cm-1

nm

M-1 cm-1

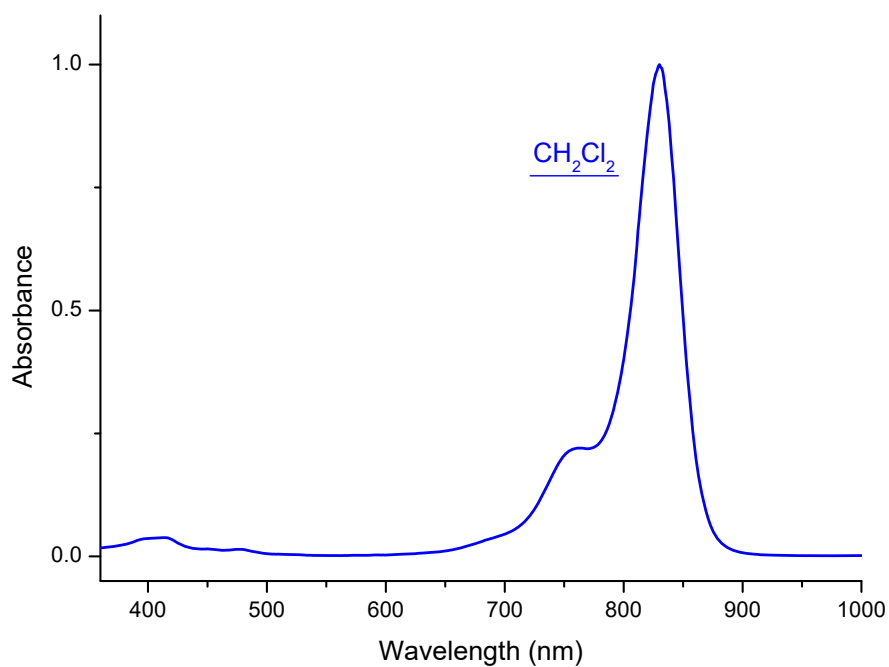
Emission

nm



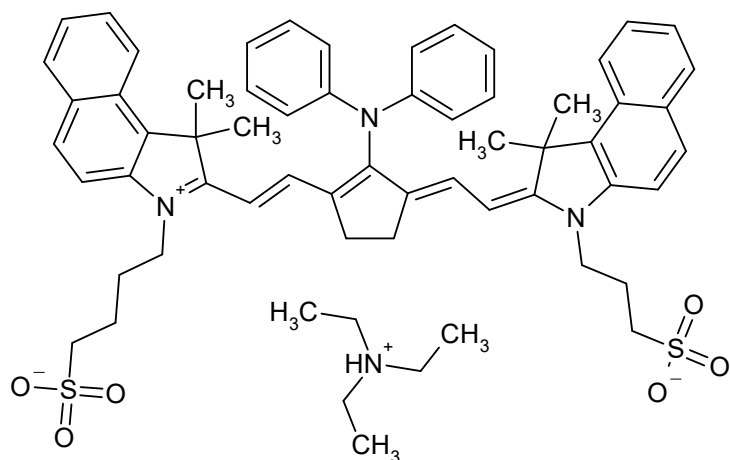
C₄₈H₅₂ClF₆N₃O₄S₂

948.5387



S11648

CAS #



Absorption

Methanol

832

nm

M-1 cm-1

Water

953

nm

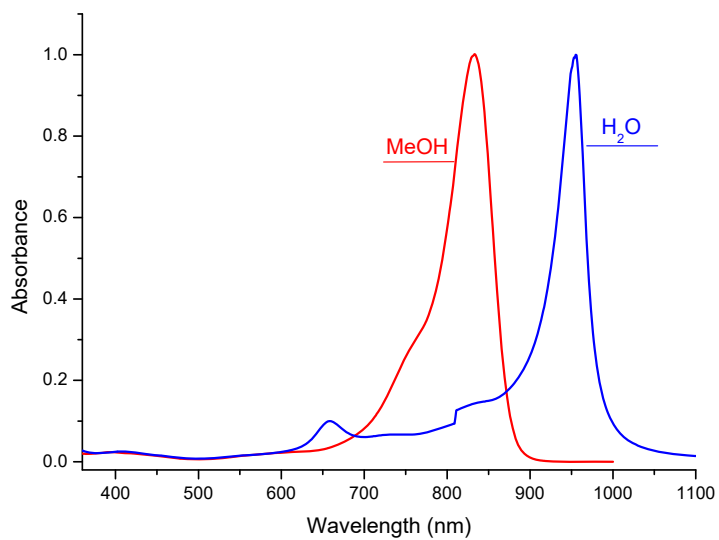
M-1 cm-1

Emission

nm

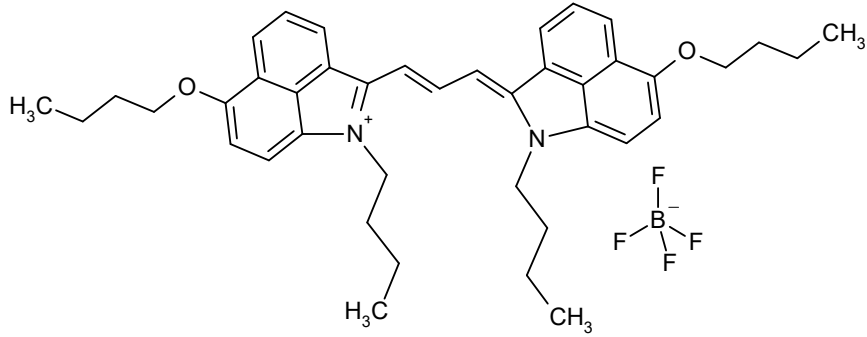
$C_{62}H_{72}N_4O_6S_2$

1033.4163



S01383

CAS #



Absorption

Methylene chloride

834 nm 143100 M-1 cm-1

Methanol

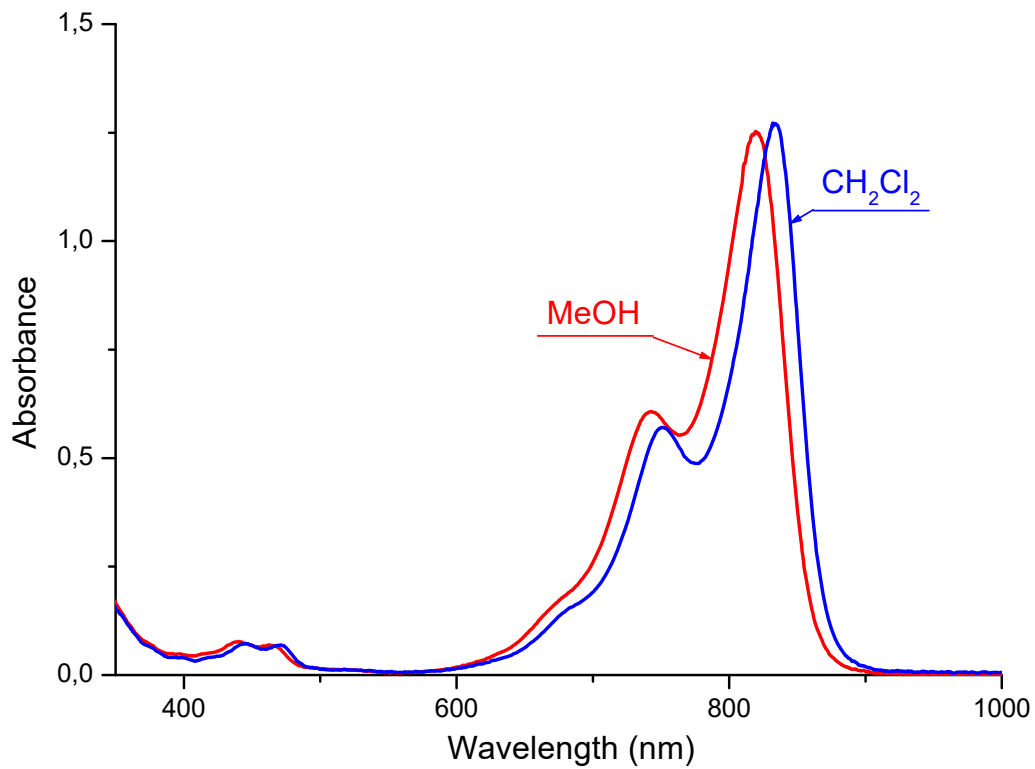
819 nm 134200 M-1 cm-1

Emission

nm

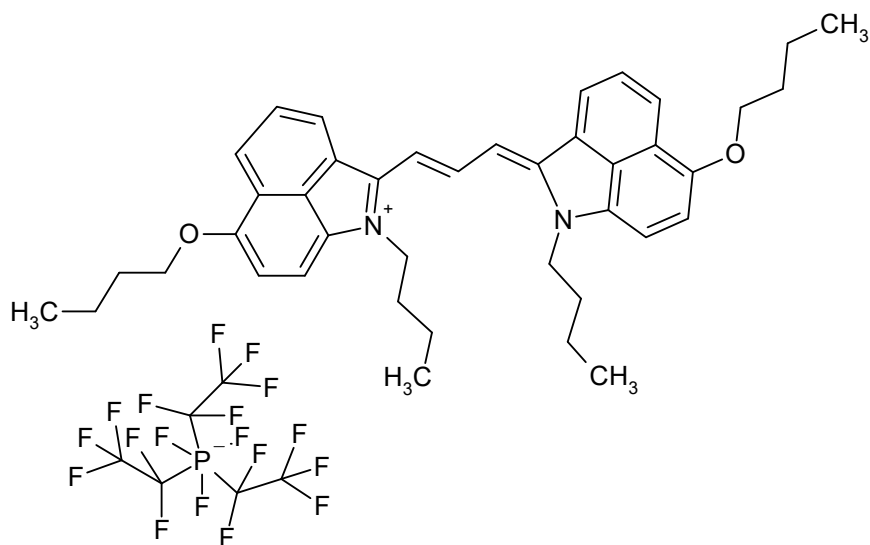
C₄₁H₄₉BF₄N₂O₂

688.6645



S08731

CAS #



Absorption

Methylene chloride

835

nm

M-1 cm-1

nm

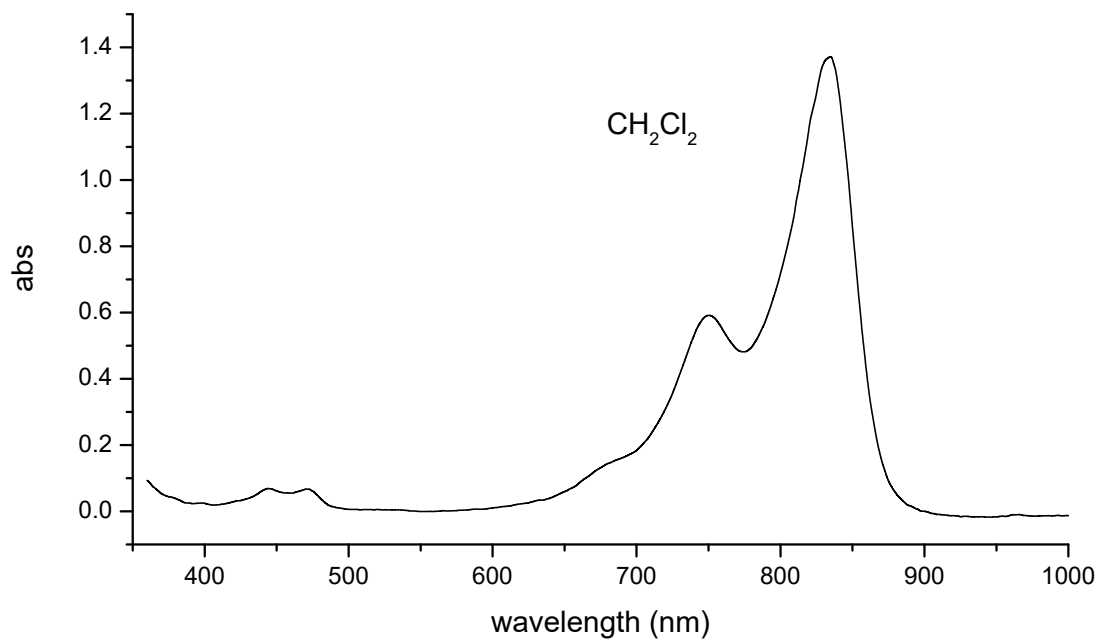
M-1 cm-1

Emission

nm

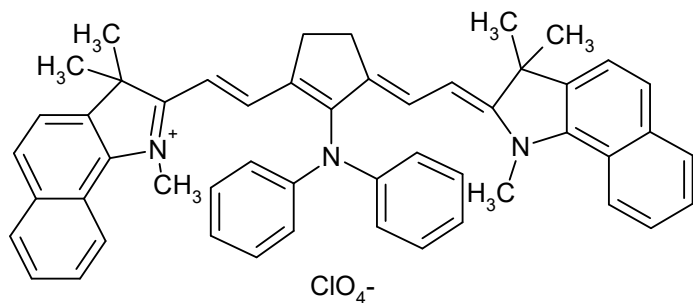
C₄₇H₄₉F₁₈N₂O₂P

1046.8718



S01981

CAS #



Absorption

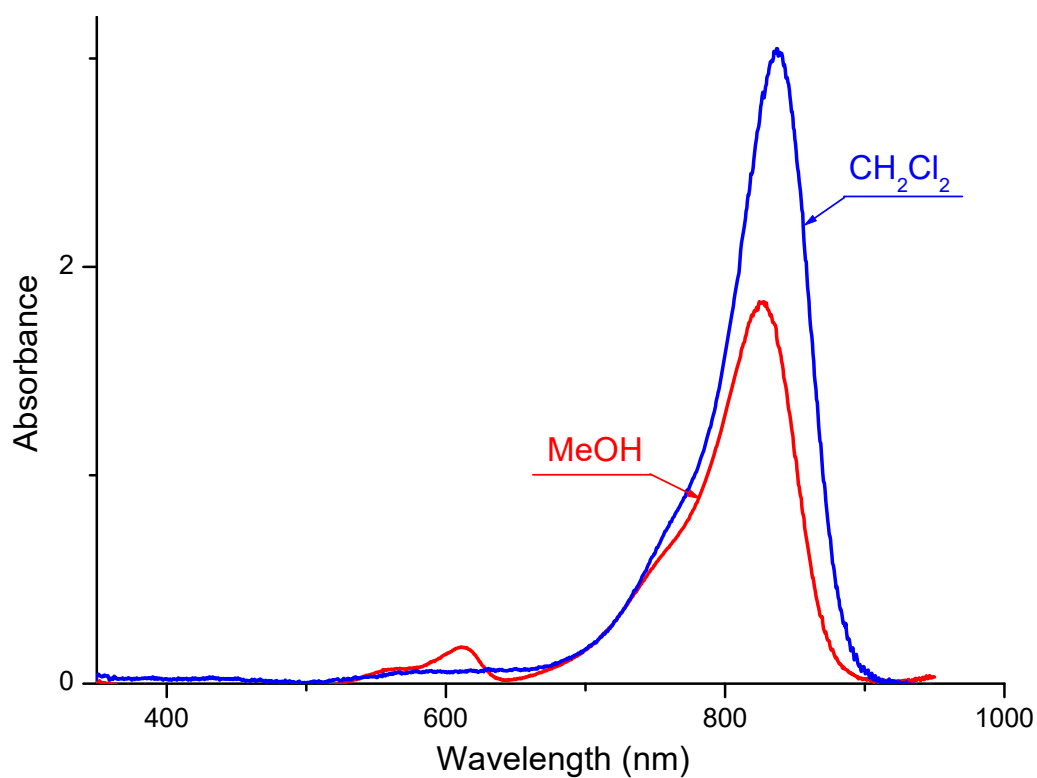
	Methylene chloride		
838	nm	305000	M-1 cm-1
<hr/>			
	Methanol		
825	nm	184000	M-1 cm-1

Emission

nm

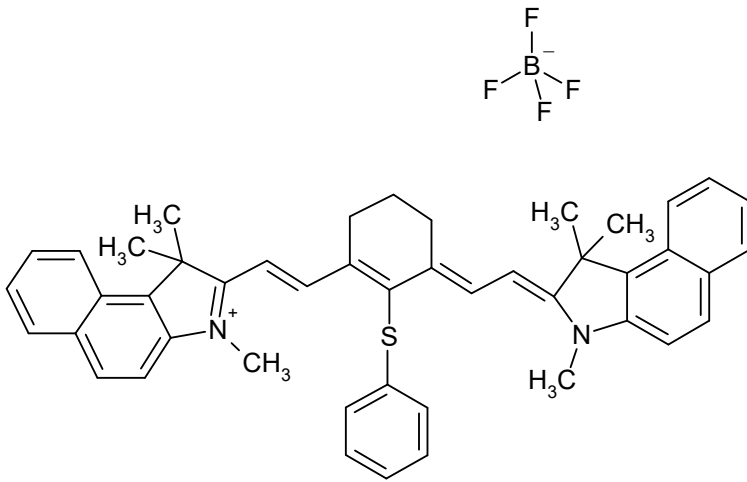
$\text{C}_{52}\text{H}_{52}\text{N}_3$

719.0143



S03972

CAS #



Absorption

Methylene chloride

838 nm 264000 M-1 cm-1

nm

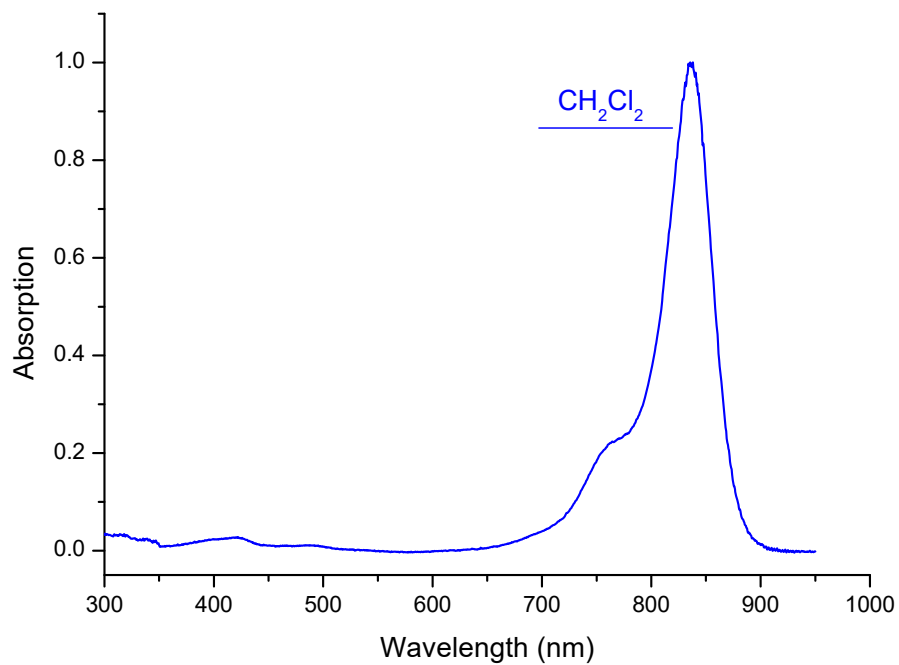
M-1 cm-1

Emission

nm

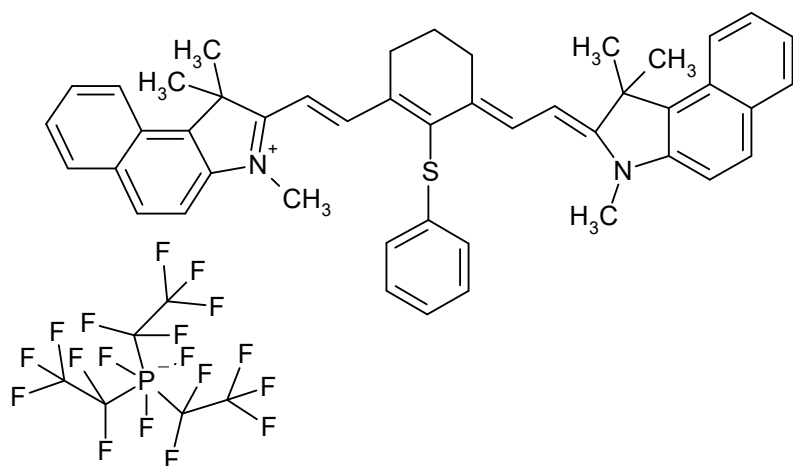
$\text{C}_{46}\text{H}_{45}\text{BF}_4\text{N}_2\text{S}$

744.7536



S09463

CAS #



Absorption

Methylene chloride

838 nm 300000 M-1 cm-1

nm

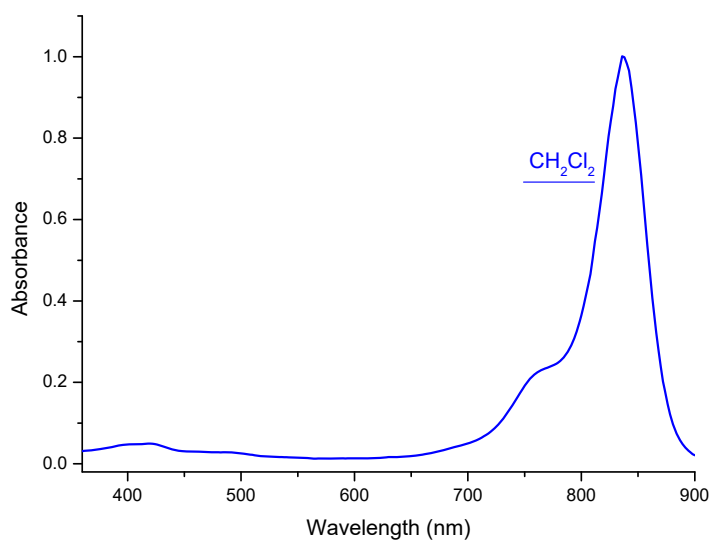
M-1 cm-1

Emission

nm

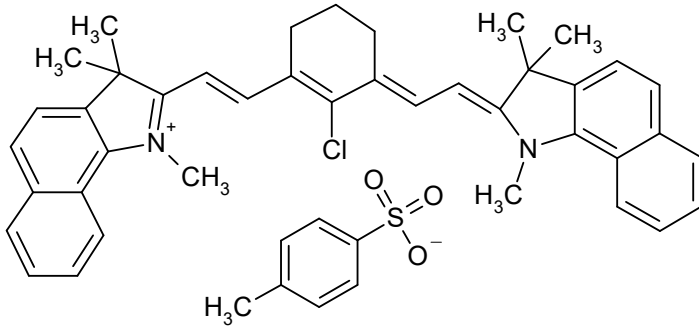
C₅₂H₄₅F₁₈N₂PS

1102.9609



S01407

CAS #
309967-80-4



Absorption

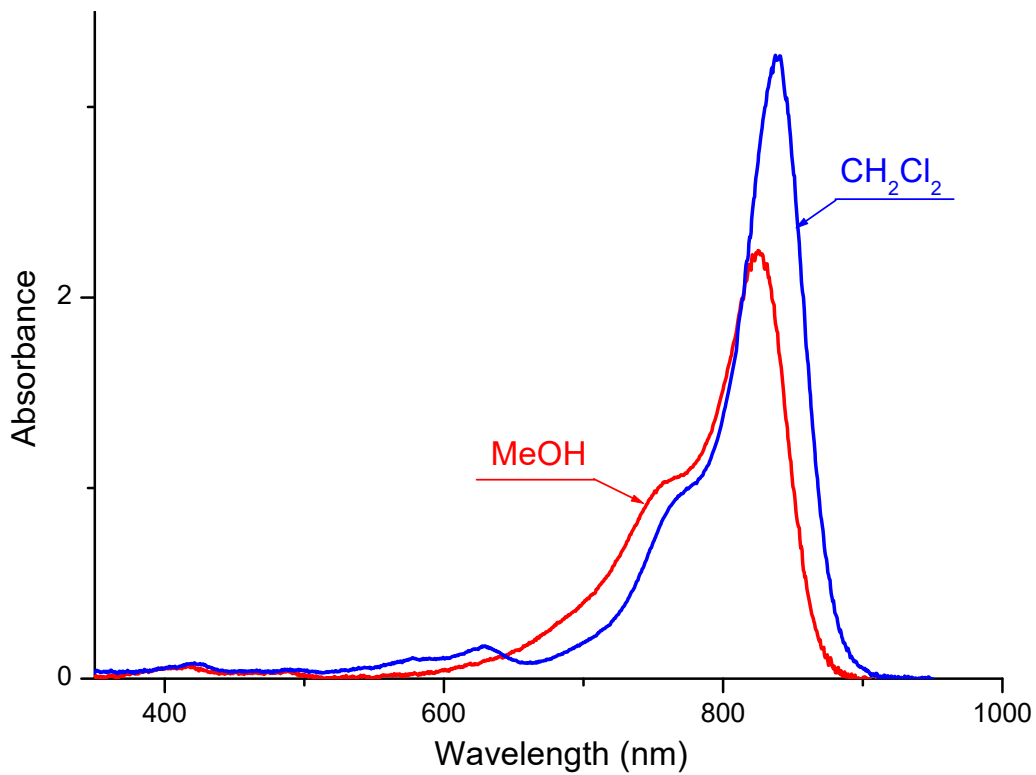
	Methylene chloride		
841	nm	327000	M-1 cm-1
<hr/>			
	Methanol		
827	nm	225000	M-1 cm-1

Emission

nm

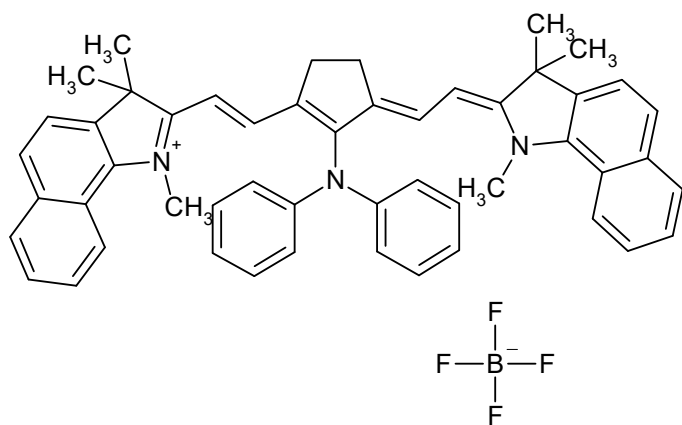
C₄₇H₄₇ClN₂O₃S

755.4272



S10763

CAS #



Absorption

PGMEA

844

nm

M-1 cm-1

nm

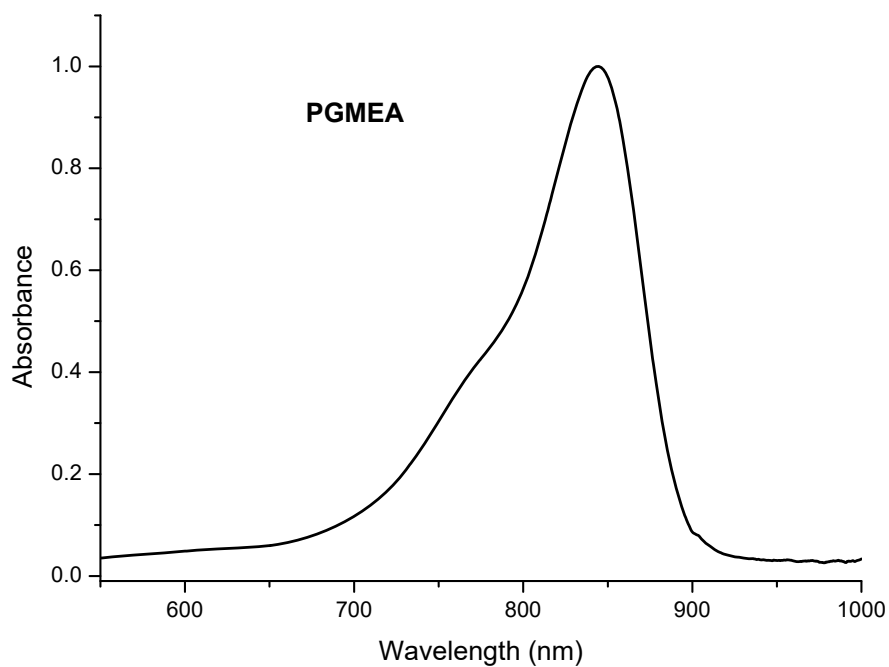
M-1 cm-1

Emission

nm

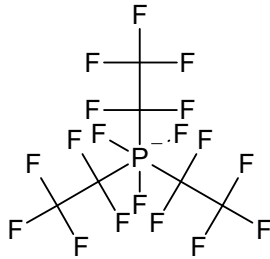
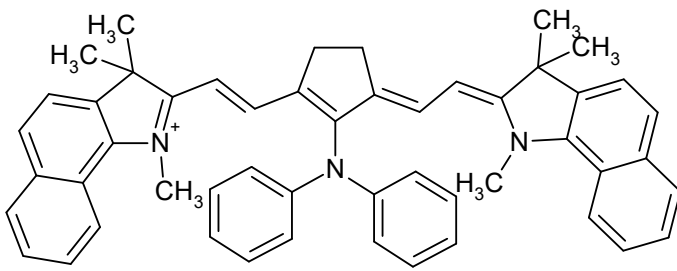
C₅₁H₄₈BF₄N₃

789.7759



S10761

CAS #



Absorption

PGMEA

846 nm M-1 cm-1

Methylene chloride

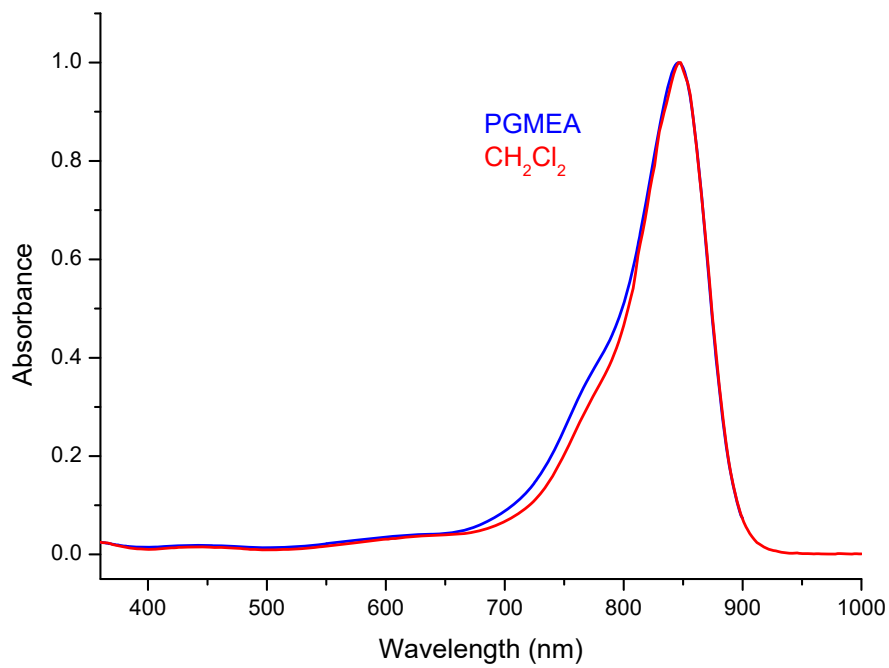
848 nm 240000 M-1 cm-1

Emission

nm

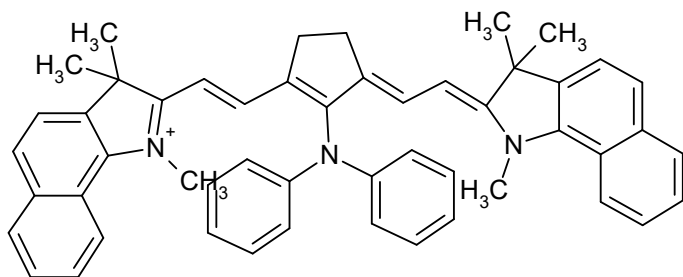
C₅₇H₄₈F₁₈N₃P

1147.9832



S10762

CAS #



Absorption

Methylene chloride

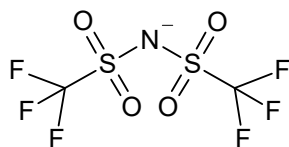
846 nm 285000 M-1 cm-1

nm

M-1 cm-1

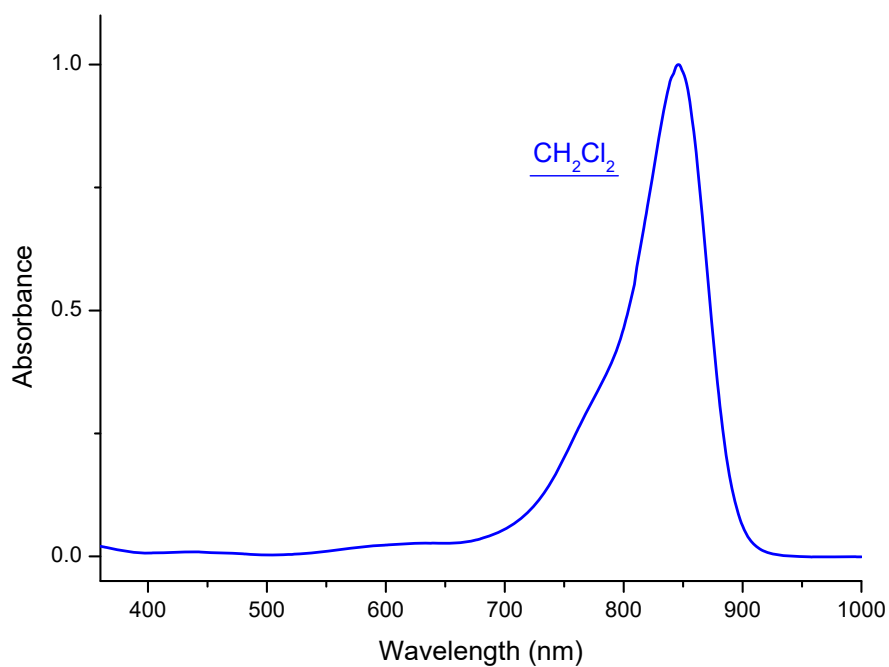
Emission

nm



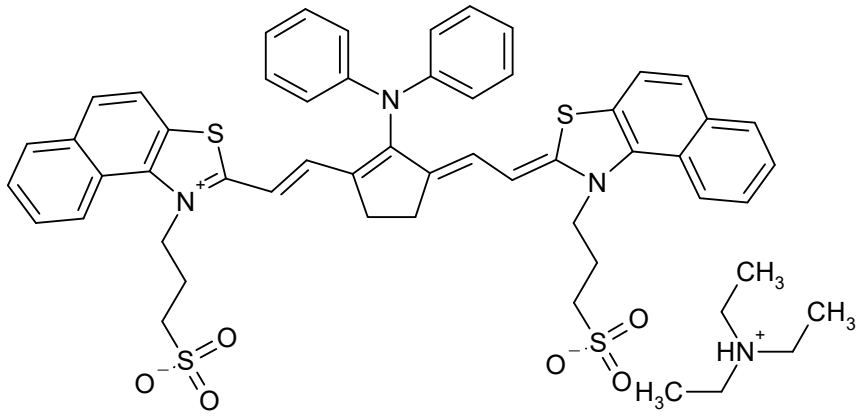
C₅₃H₄₈F₆N₄O₄S₂

983.1163



S01295

CAS #
28645-14-9



Absorption

Methanol

848 nm 210000 M-1 cm-1

nm

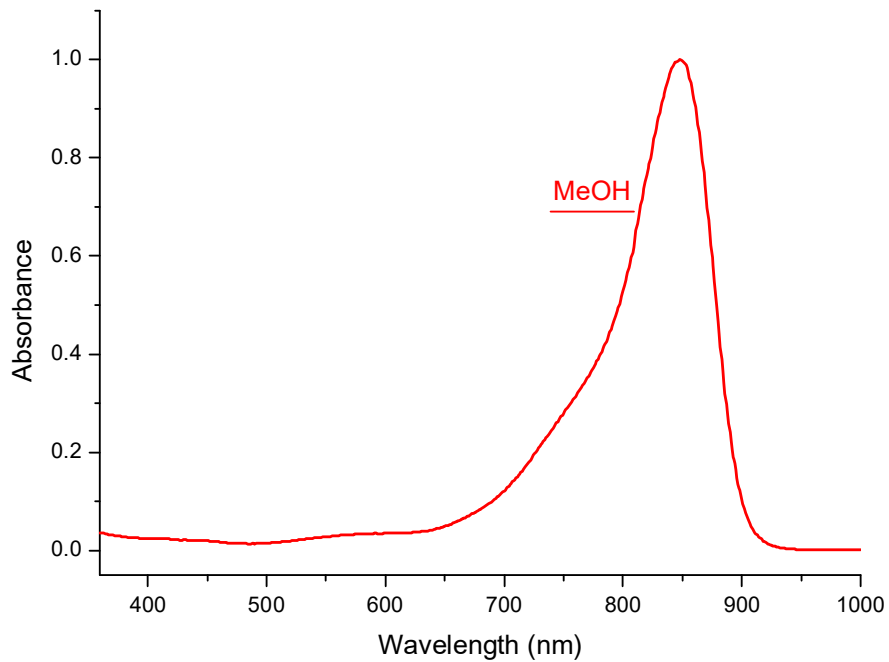
M-1 cm-1

Emission

nm

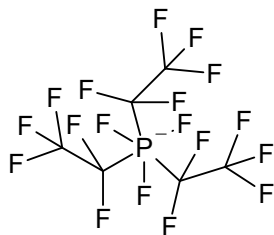
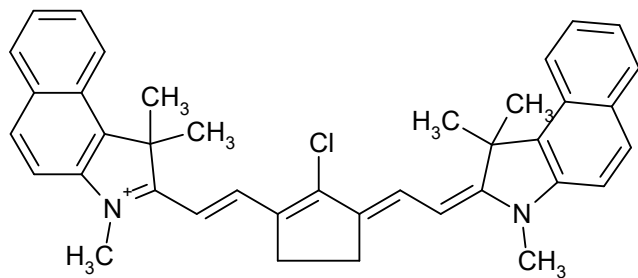
$C_{55}H_{58}N_4O_6S_4$

999.3547



S11857

CAS #



Absorption

Methylene chloride

850 nm 345000 M-1 cm-1

nm

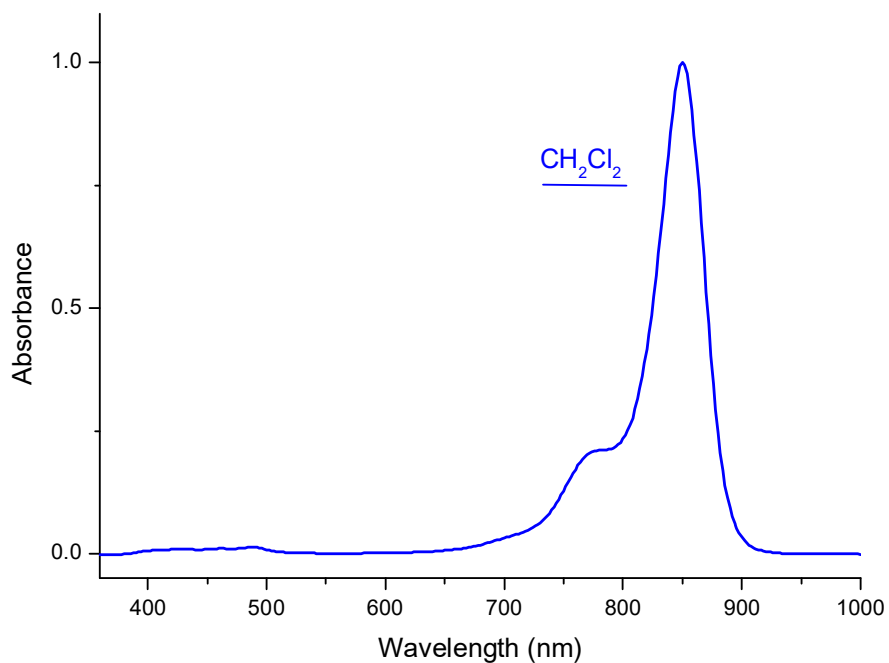
M-1 cm-1

Emission

nm

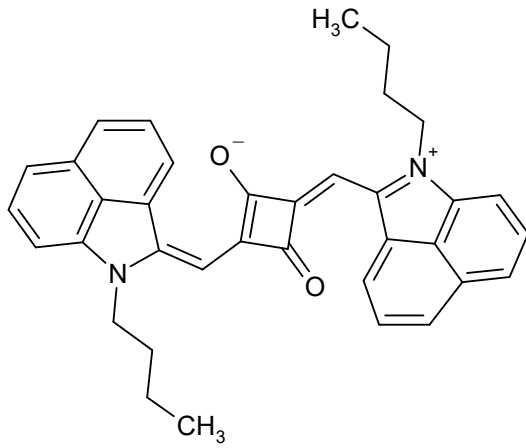
C₄₅H₃₈ClF₁₈N₂P

1015.2160



S04253

CAS #



Absorption

Methanol

858 nm 158000 M-1 cm-1

nm

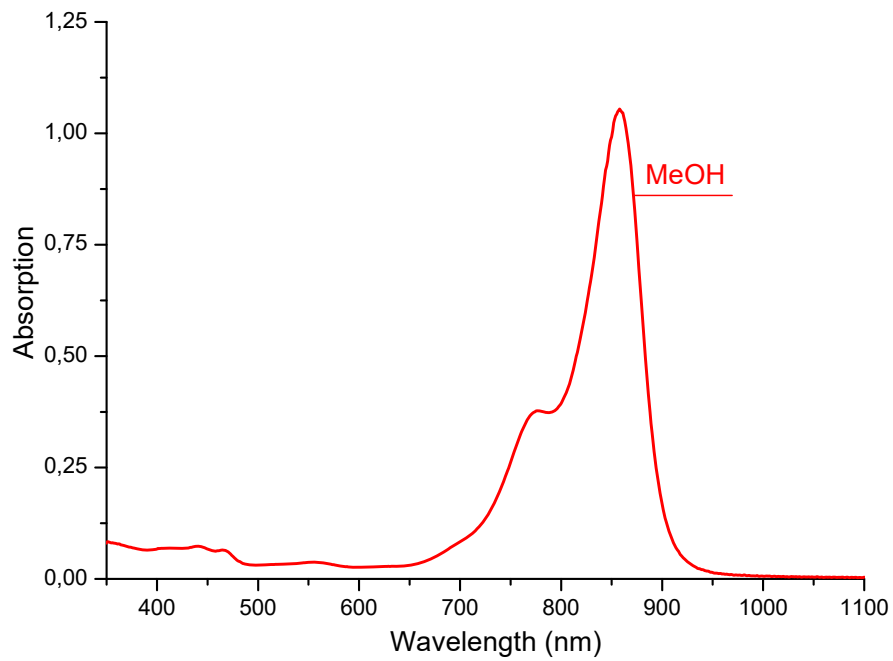
M-1 cm-1

Emission

nm

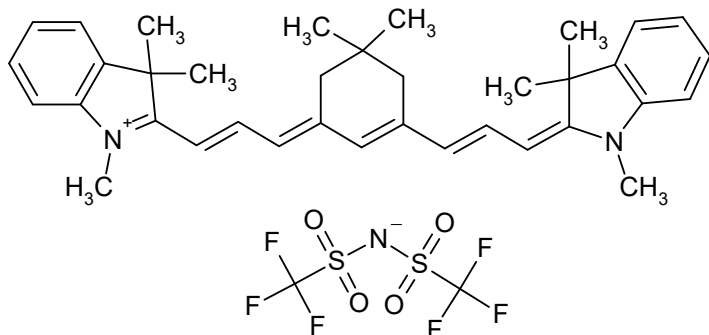
C₃₆H₃₂N₂O₂

524.6686



S09441

CAS #



Absorption

Methylene chloride

871 nm 393000 M-1 cm-1

nm

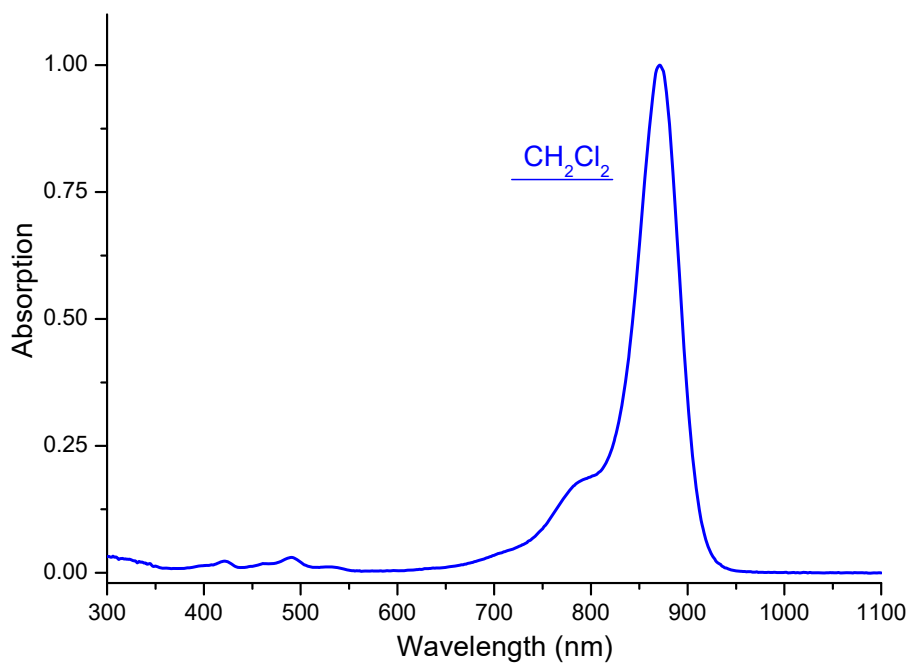
M-1 cm-1

Emission

nm

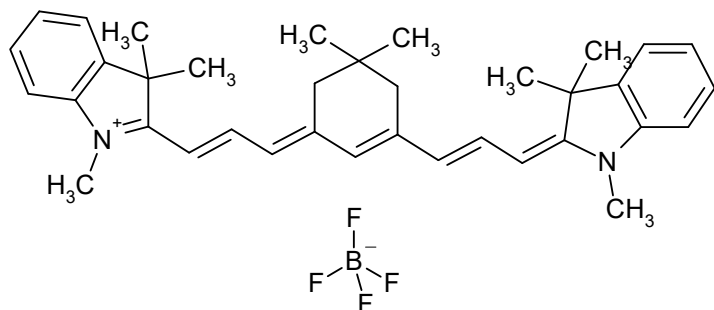
C₃₈H₄₃F₆N₃O₄S₂

783.9025



S01379

CAS #
410536-44-6



Absorption

Methylene chloride

872 nm 379600 M-1 cm-1

Methanol

856 nm 230900 M-1 cm-1

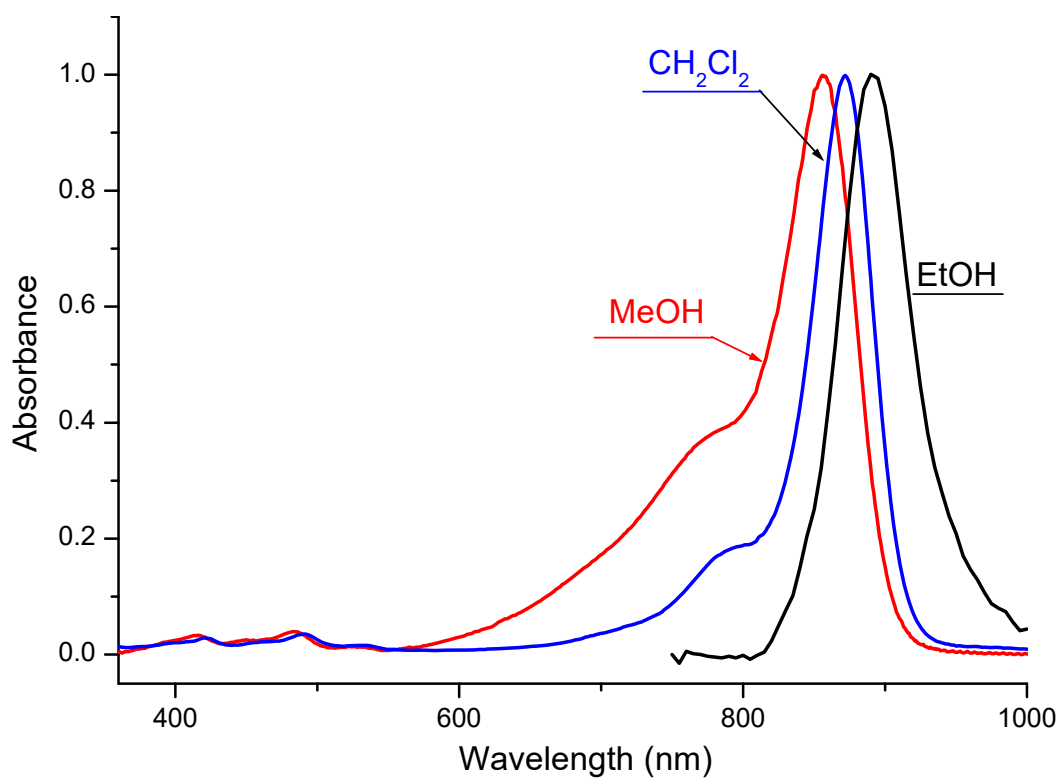
Emission

Ethanol

891 nm

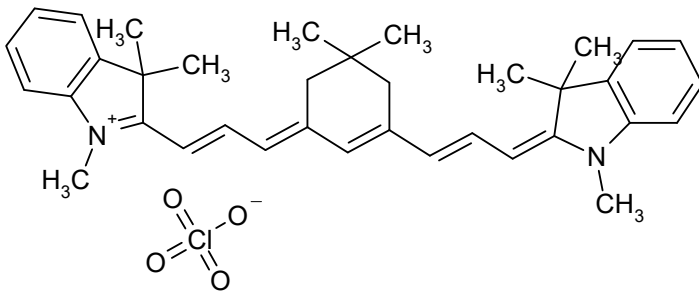
C₃₆H₄₃BF₄N₂

590.5621



S01173

CAS #
68339-63-9



Absorption

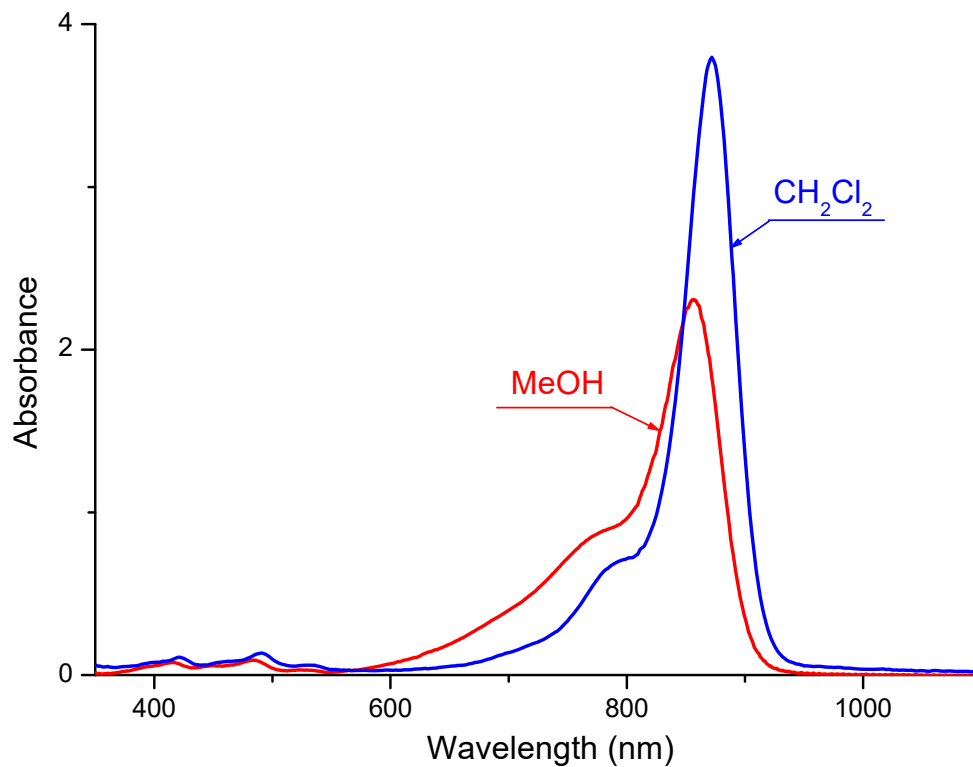
	Methylene chloride		
872	nm	379600	M-1 cm-1
<hr/>			
	Methanol		
856	nm	230900	M-1 cm-1

Emission

nm

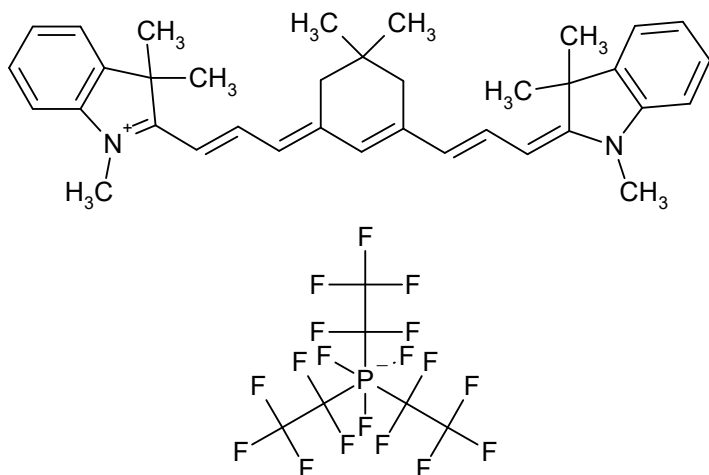
C₃₆H₄₃ClN₂O₄

603.2081



S09442

CAS #



Absorption

Methylene chloride

872 nm 389600 M-1 cm-1

nm

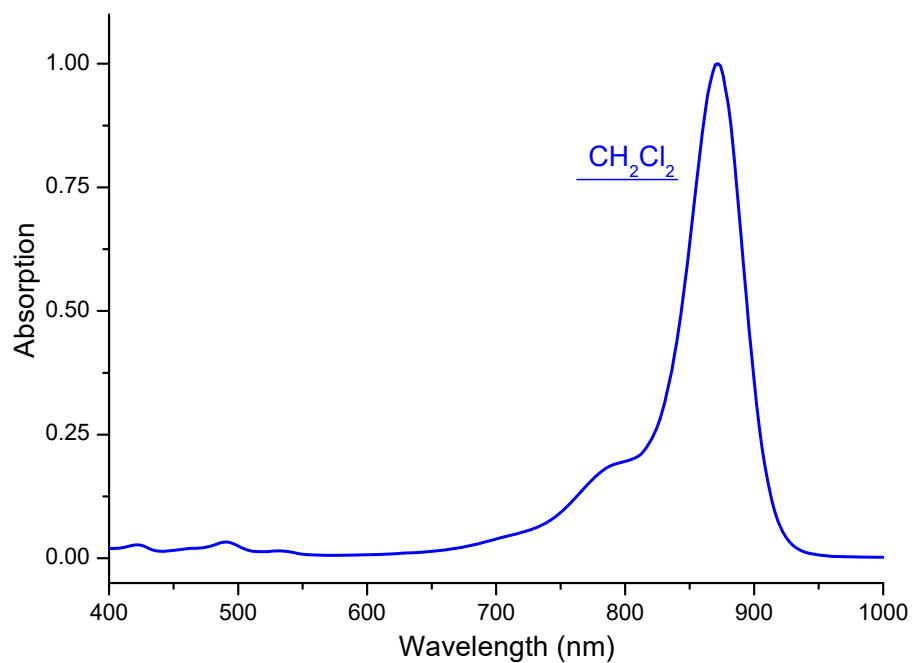
M-1 cm-1

Emission

nm

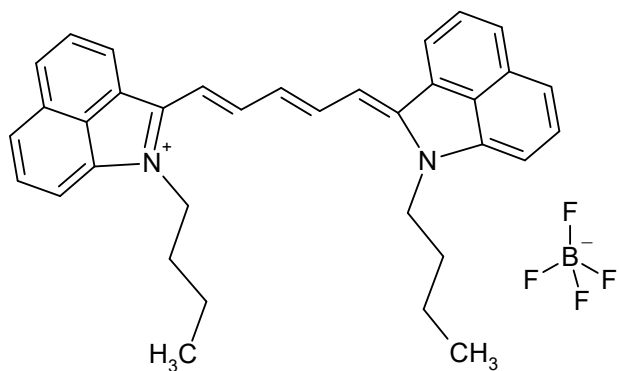
C₄₂H₄₃F₁₈N₂P

948.7694



S01965

CAS #



Absorption

Methylene chloride

875 nm 268000 M-1 cm-1

Methanol

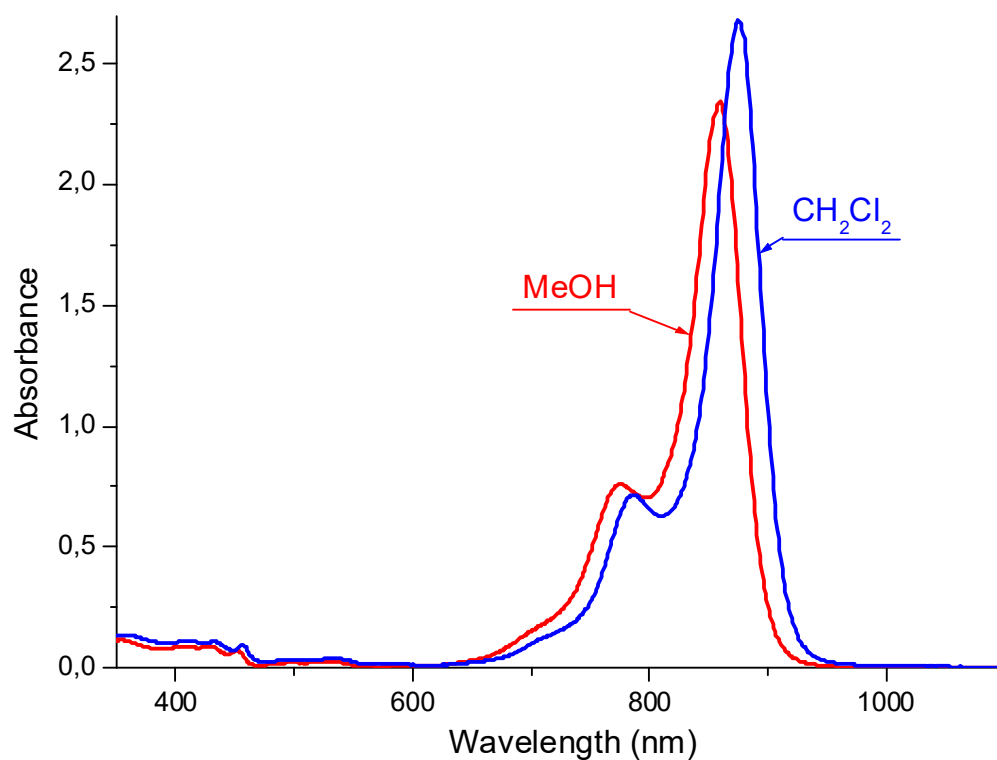
860 nm 234400 M-1 cm-1

Emission

nm

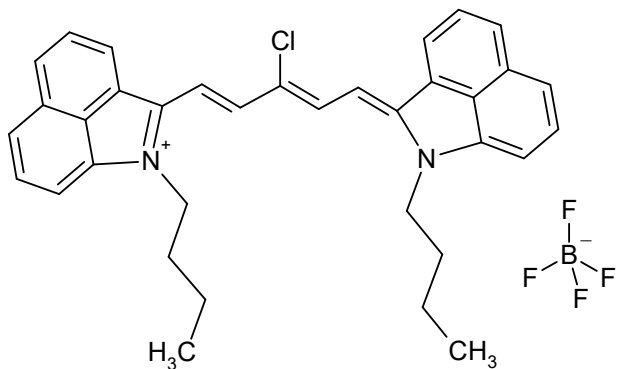
C₃₅H₃₅BF₄N₂

570.4872



S01427

CAS #



Absorption

Methylene chloride

875 nm 222600 M-1 cm-1

Methanol

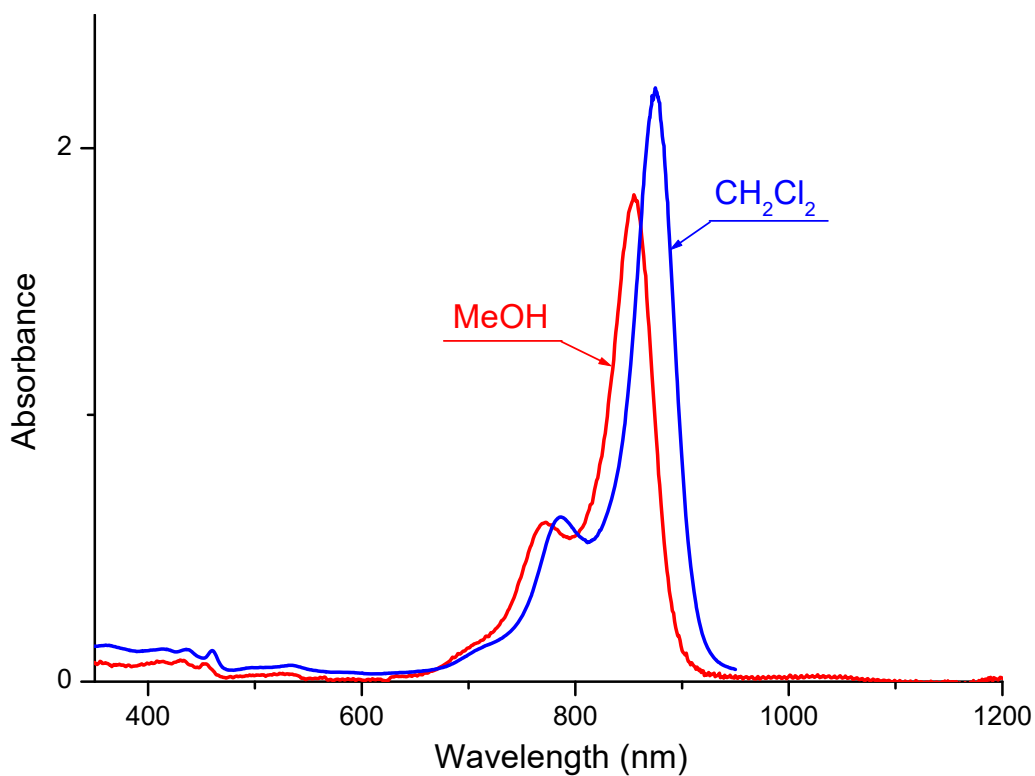
855 nm 182200 M-1 cm-1

Emission

nm

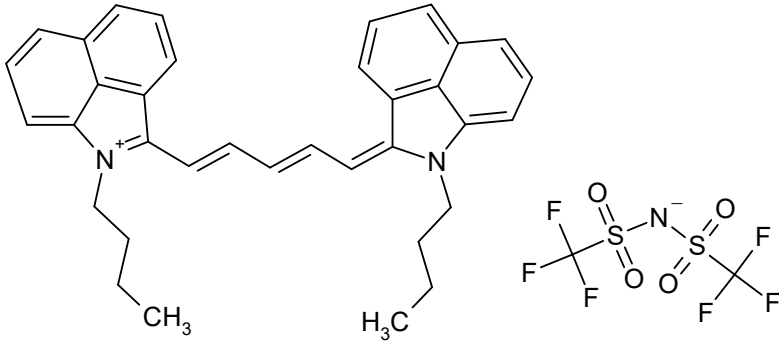
C₃₅H₃₄BClF₄N₂

604.9322



S09455

CAS #



Absorption

Methylene chloride

876 nm 260000 M-1 cm-1

nm

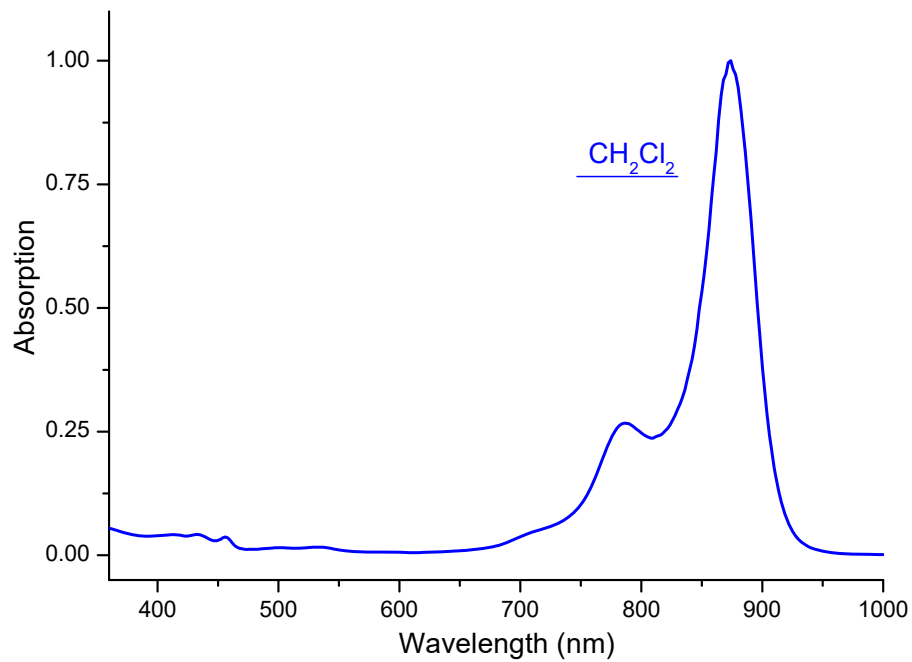
M-1 cm-1

Emission

nm

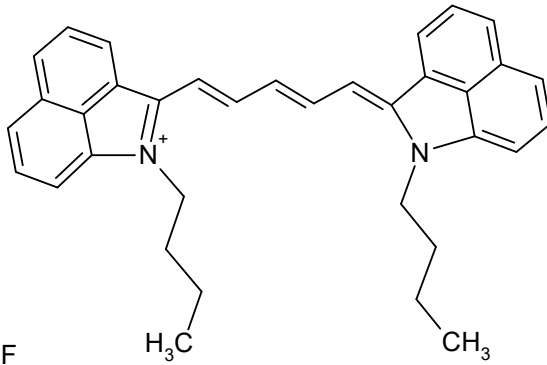
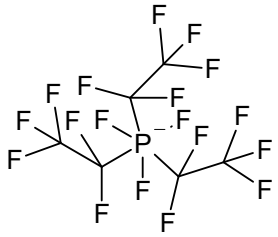
C₃₇H₃₅F₆N₃O₄S₂

763.8276



S09426

CAS #



Absorption

Methylene chloride

877 nm 270000 M-1 cm-1

nm

M-1 cm-1

Emission

nm

C₄₁H₃₅F₁₈N₂P

928.6945

