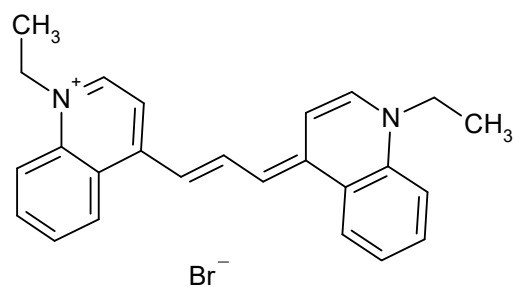


S01350

CAS #
19764-88-6

Cryptocyanine Bromide



Absorption

	Methanol	
707	nm	222000 M-1 cm-1

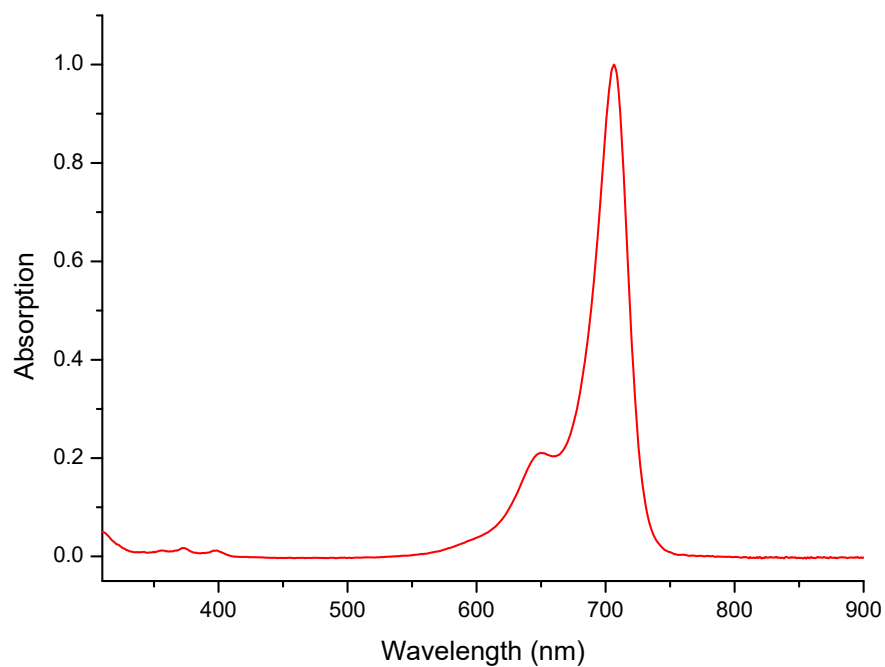
	nm	M-1 cm-1
--	----	----------

Emission

	Ethanol
720	nm

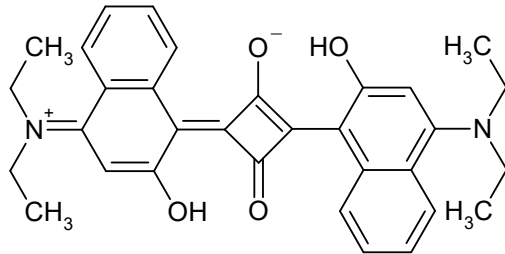
C₂₅H₂₅BrN₂

433.3954



S04237

CAS #



Absorption

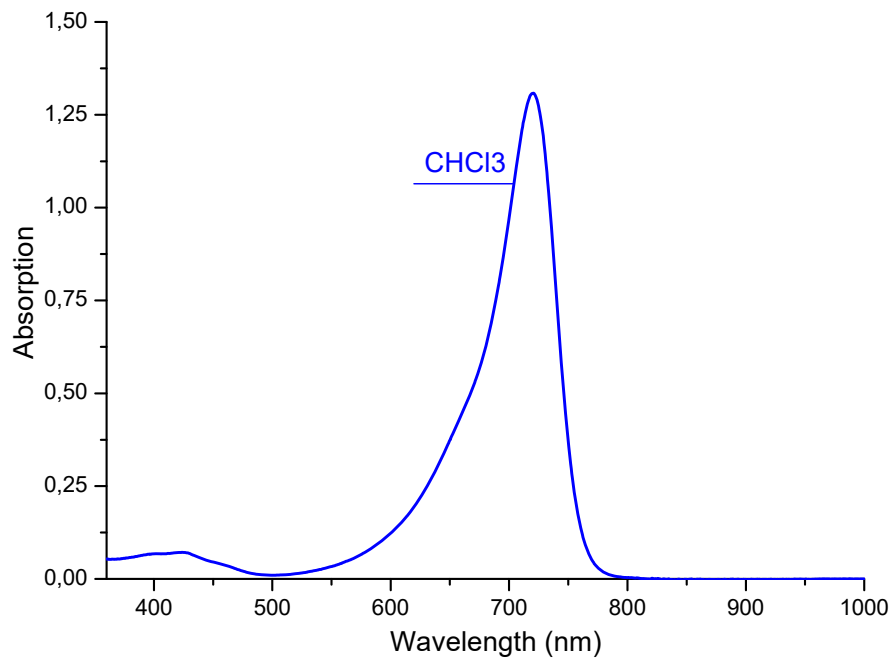
		CHCl ₃	
720	nm	130800	M-1 cm-1
	nm		M-1 cm-1

Emission

nm

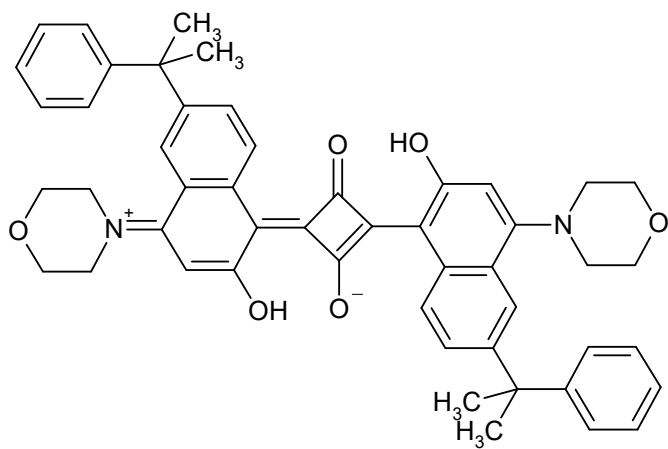
C₃₂H₃₂N₂O₄

508.6228



S02109

CAS #



Absorption

Methylene chloride

725 nm 127600 M-1 cm-1

nm

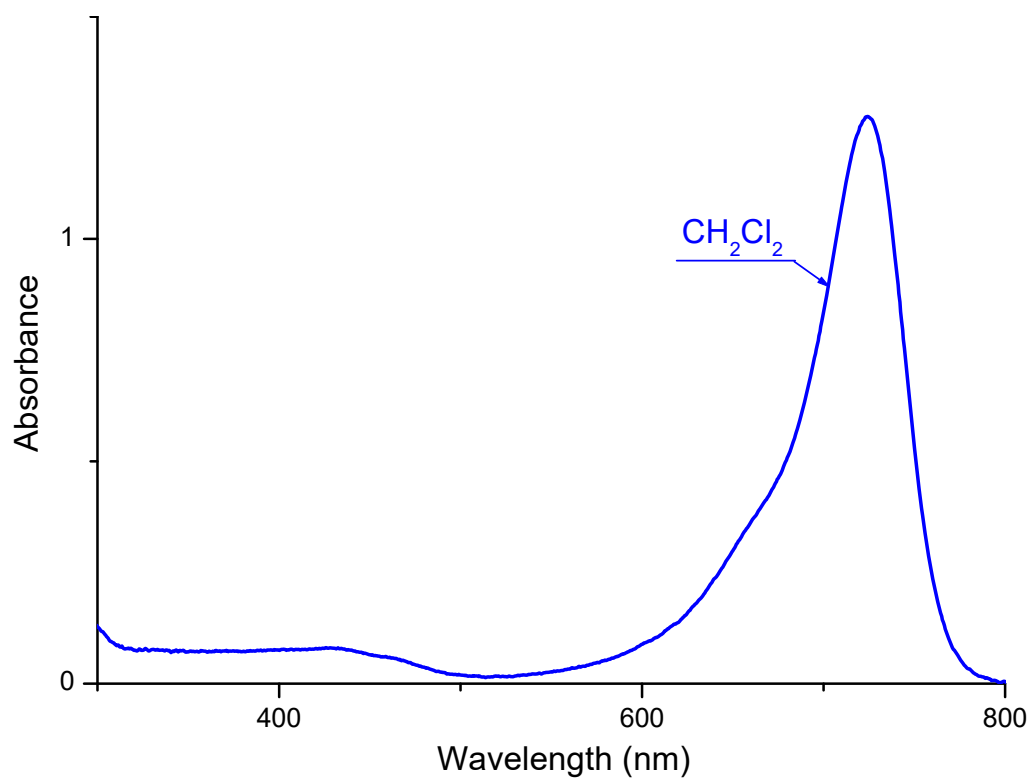
M-1 cm-1

Emission

nm

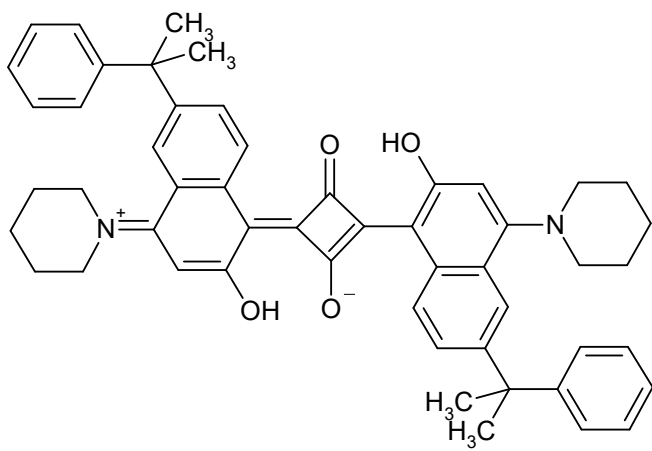
$C_{50}H_{48}N_2O_6$

772.9499



S02108

CAS #



Absorption

Methylene chloride

729 nm 137400 M-1 cm-1

nm

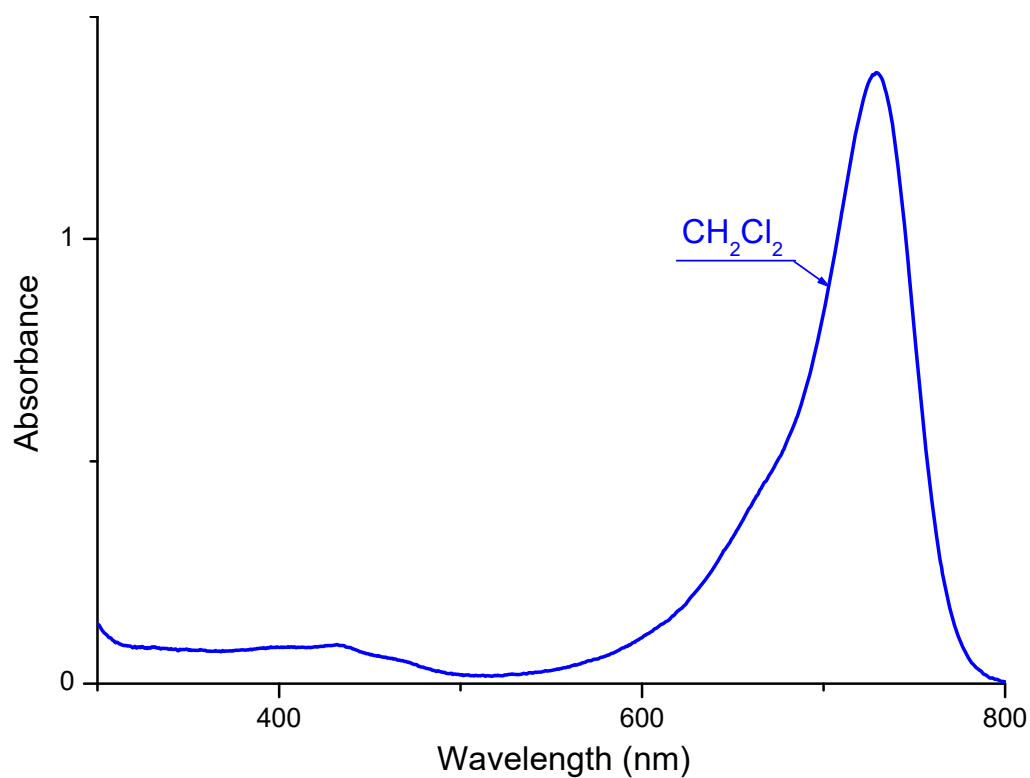
M-1 cm-1

Emission

nm

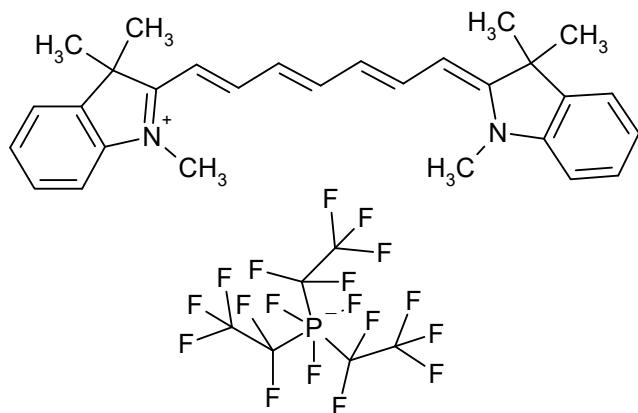
$C_{52}H_{52}N_2O_4$

769.0052



S11856

CAS #



Absorption

Methylene chloride

756 nm 330000 M-1 cm-1

nm

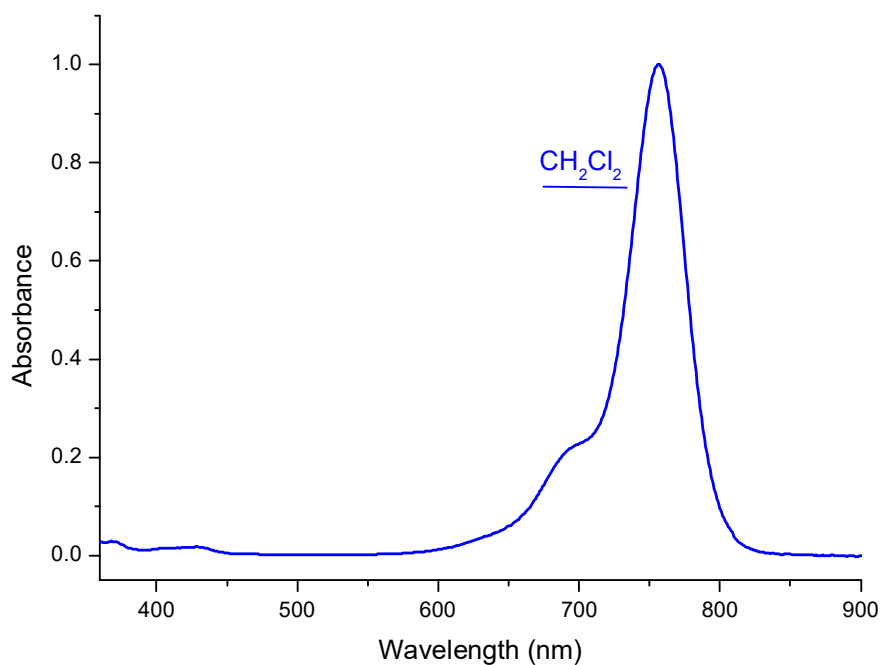
M-1 cm-1

Emission

nm

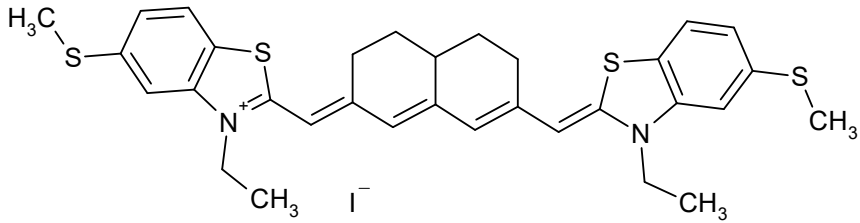
$C_{35}H_{33}F_{18}N_2P$

854.6117



S04287

CAS #
181529-15-7



Absorption

Methanol			
757	nm	264000	M-1 cm-1

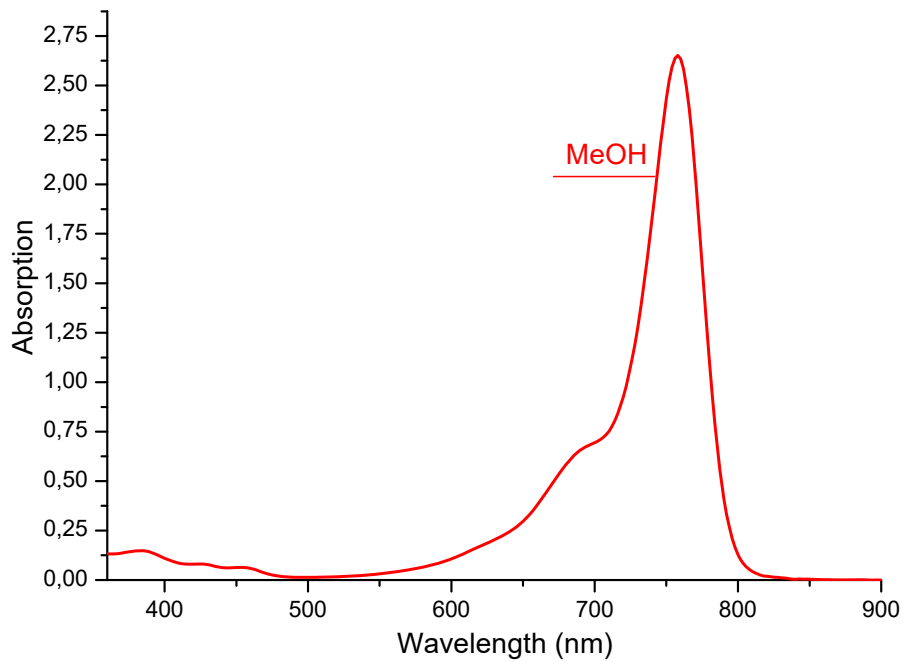
	nm		M-1 cm-1
--	----	--	----------

Emission

nm

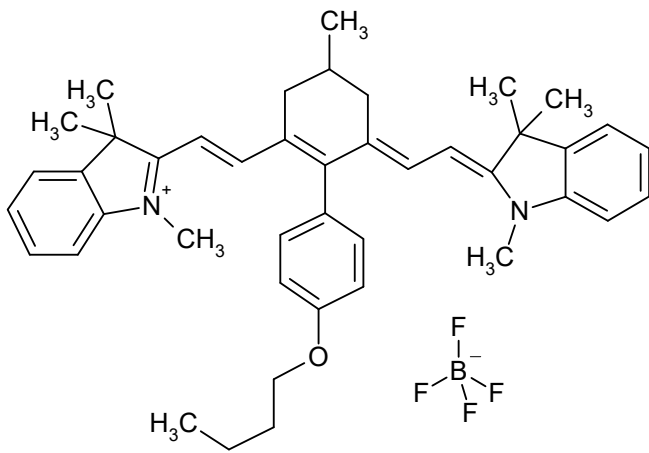
$C_{32}H_{35}IN_2S_4$

702.8096



S01980

CAS #



Absorption

Methylene chloride

762 nm 382900 M-1 cm-1

Methanol

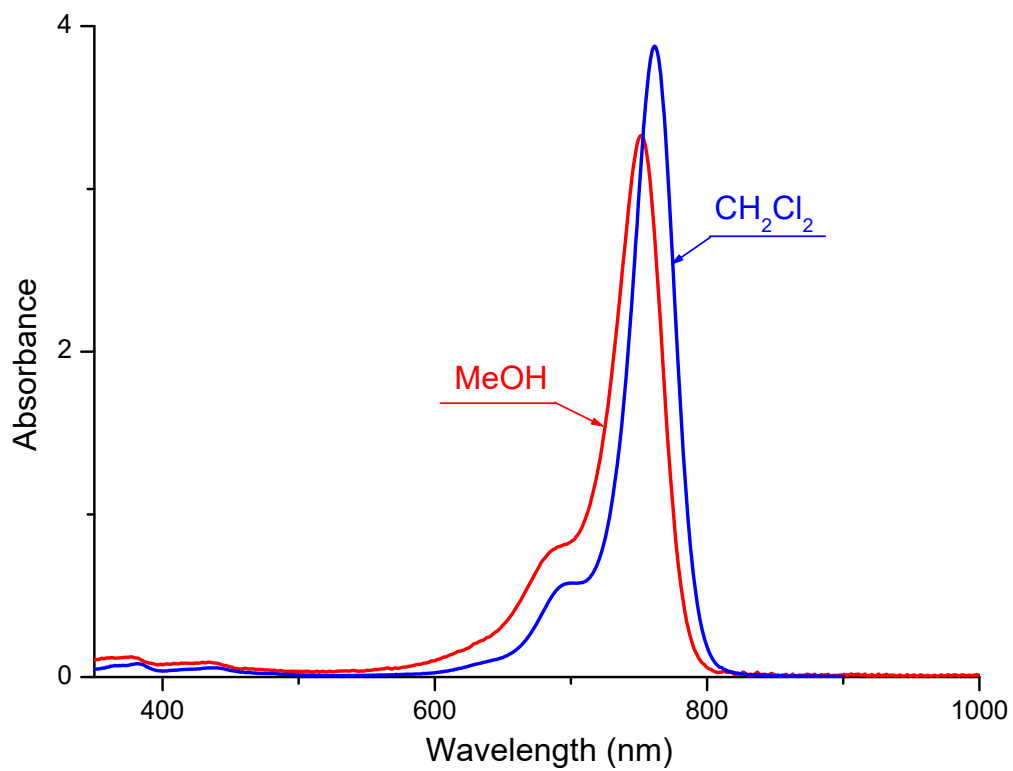
752 nm 333000 M-1 cm-1

Emission

nm

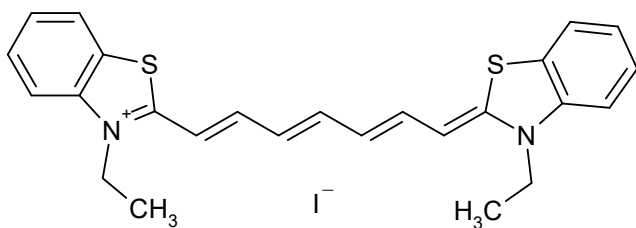
C₄₃H₅₁BF₄N₂O

698.7033



D00318

CAS #
3071-70-3



Absorption

	Ethanol	
762	nm	250000 M-1 cm-1

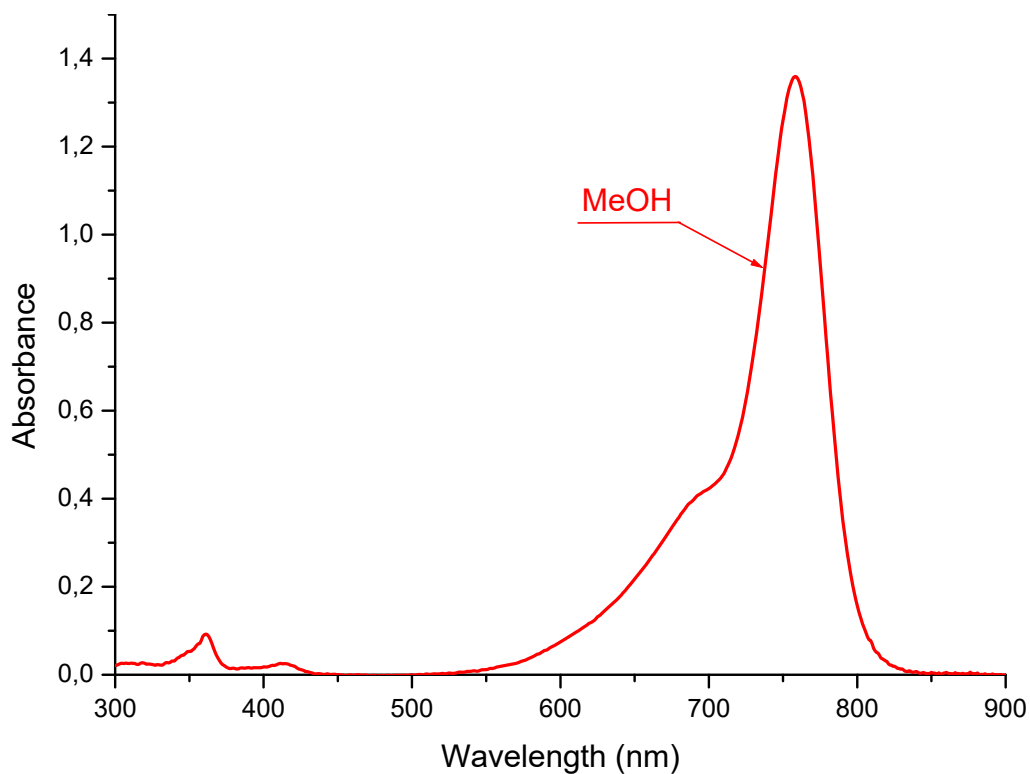
	nm	M-1 cm-1
--	----	----------

Emission

nm

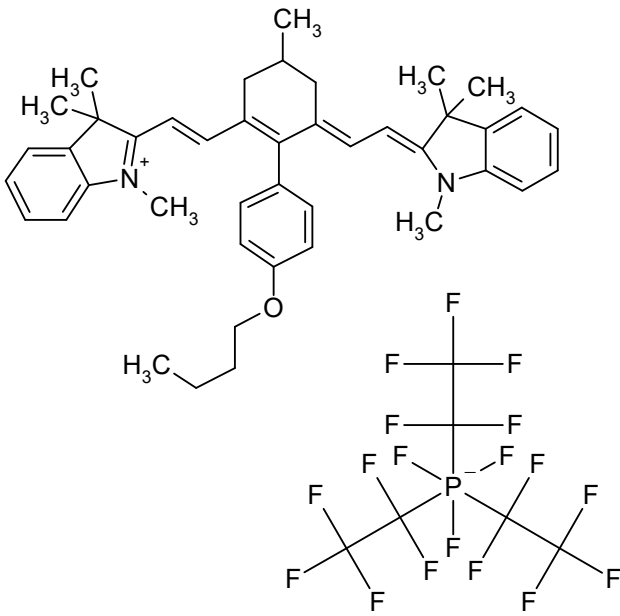
C₂₅H₂₅N₂S₂

544.5238



S10759

CAS #



Absorption

Methylene chloride

762 nm 375000 M-1 cm-1

nm

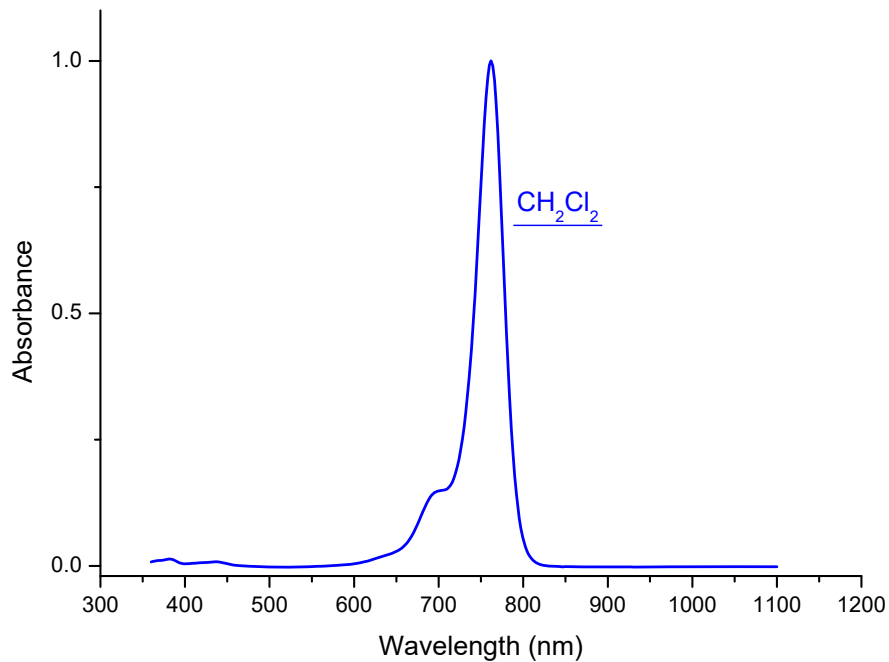
M-1 cm-1

Emission

nm

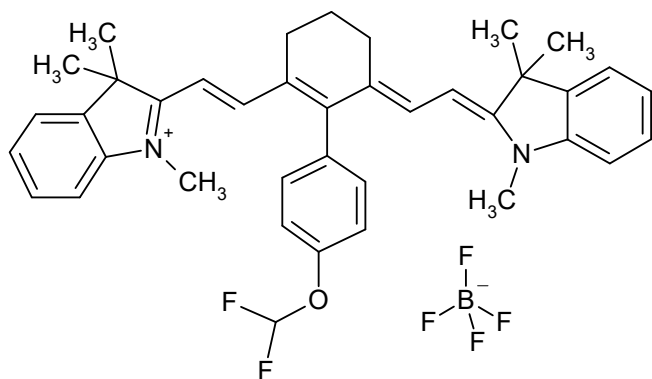
C₄₉H₅₁F₁₈N₂OP

1056.9106



S01986

CAS #



Absorption

Methylene chloride

766 nm 364000 M-1 cm-1

Methanol

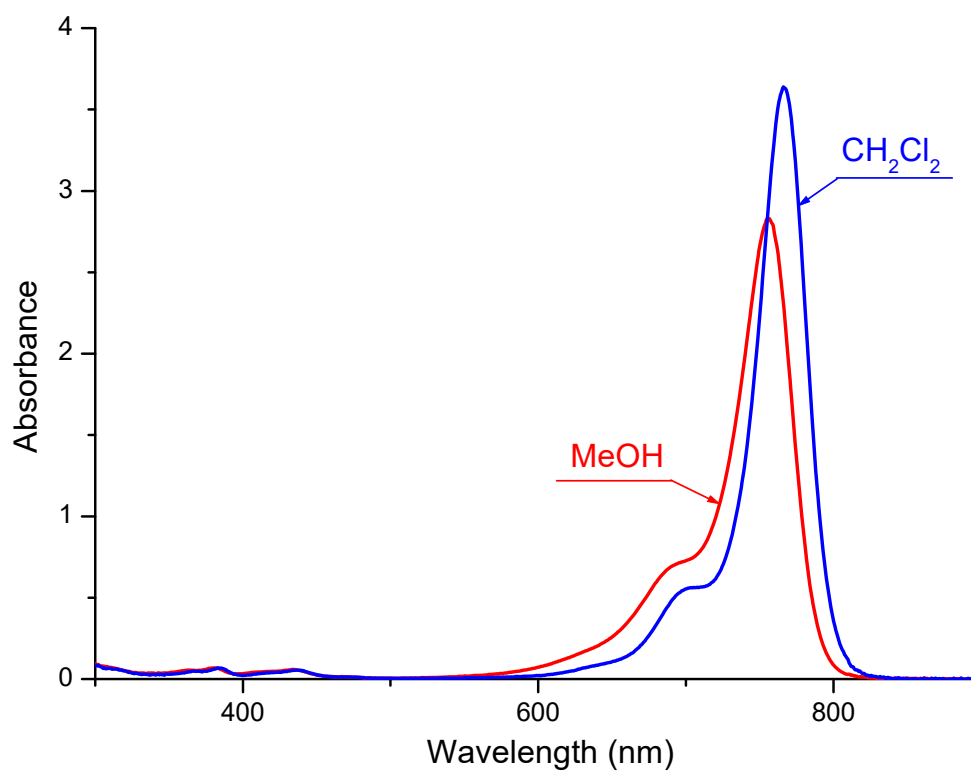
756 nm 283000 M-1 cm-1

Emission

nm

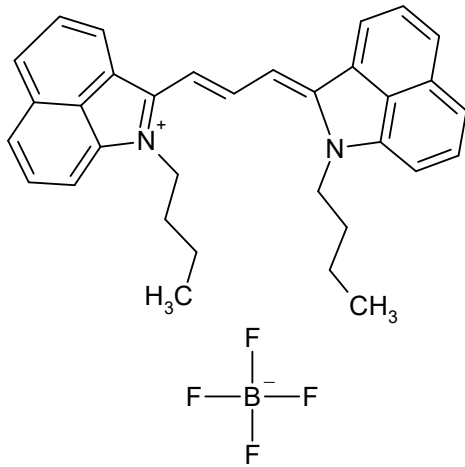
C₃₉H₄₁BF₆N₂O

678.5758



S01382

CAS #
143185-79-9



Absorption

Methylene chloride

769 nm 152000 M-1 cm-1

Methanol

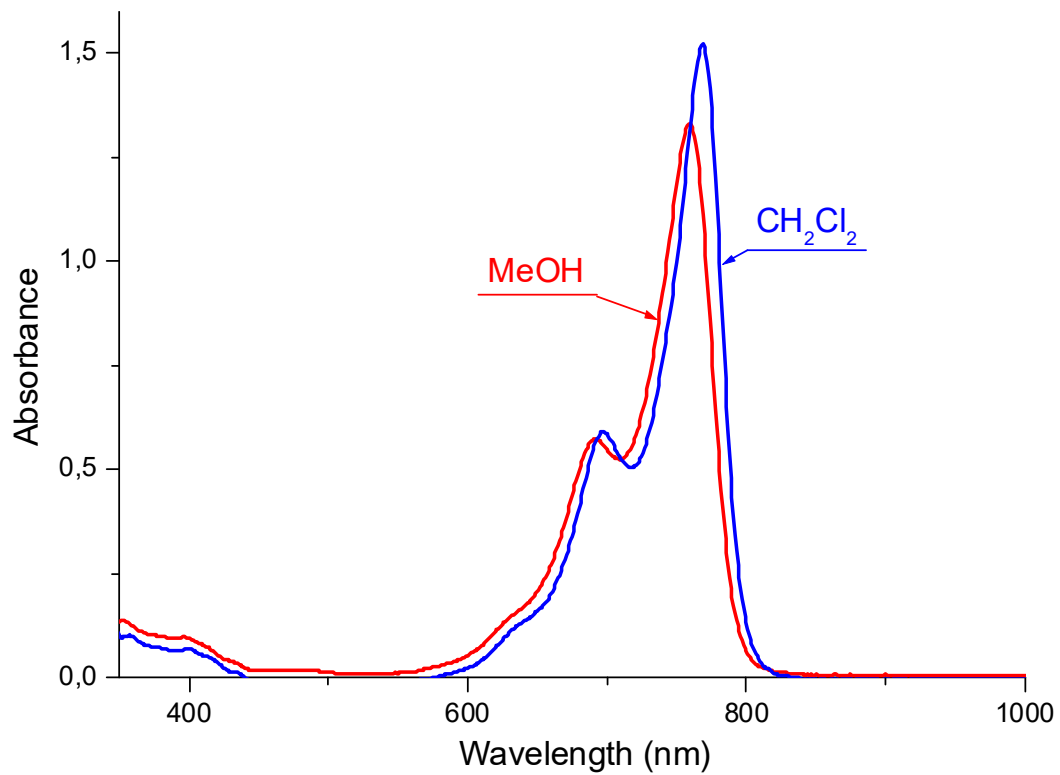
759 nm 132800 M-1 cm-1

Emission

nm

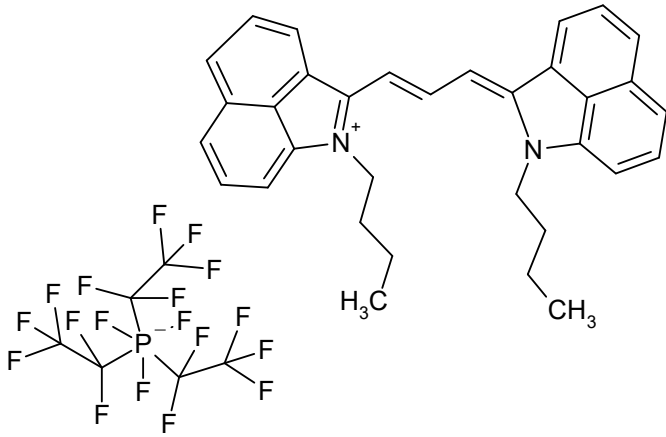
$\text{C}_{33}\text{H}_{33}\text{BF}_4\text{N}_2$

544.4490



S08730

CAS #



Absorption

Methylene chloride

769

nm

M-1 cm-1

nm

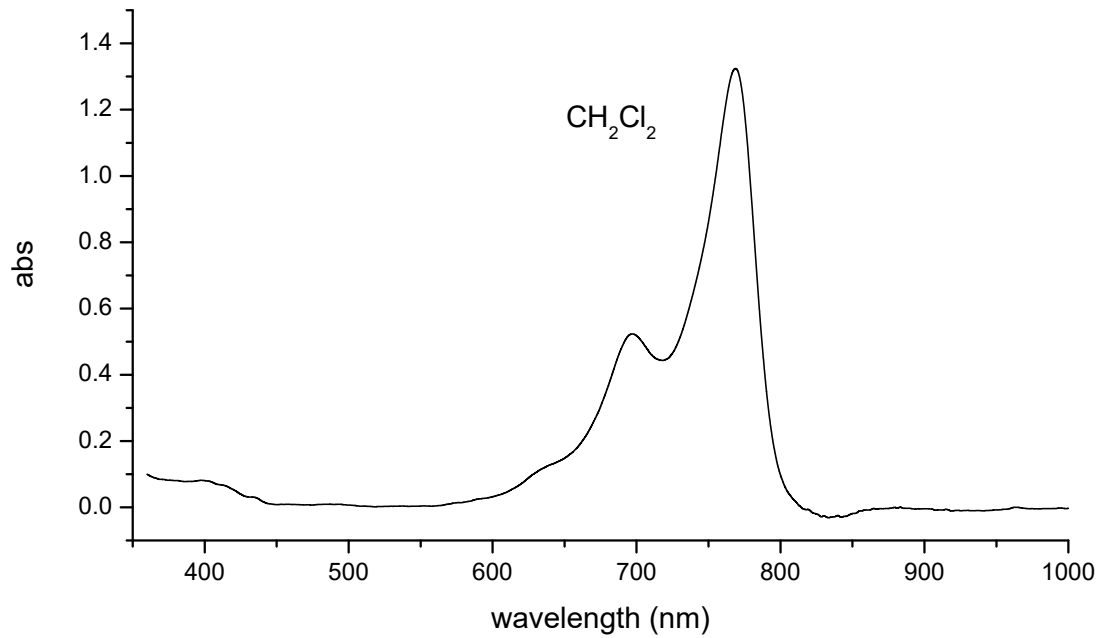
M-1 cm-1

Emission

nm

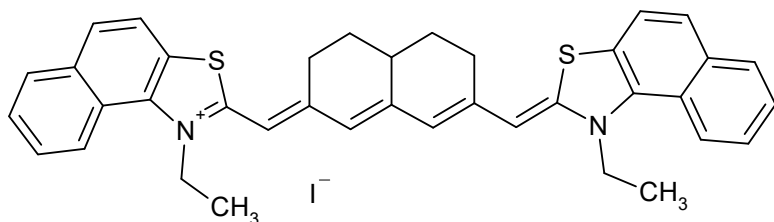
$C_{39}H_{33}F_{18}N_2P$

902.6563



S01033

CAS #
151567-53-2



Absorption

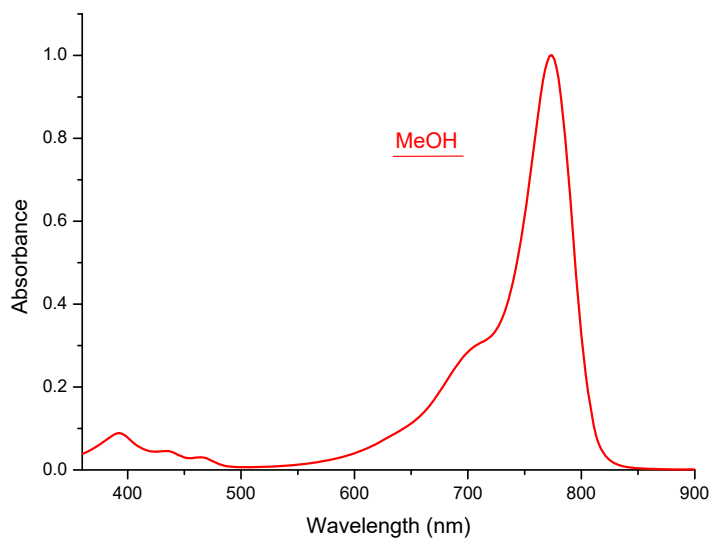
Methanol			
774	nm	200000	M-1 cm-1
<hr/>			
	nm		M-1 cm-1

Emission

nm

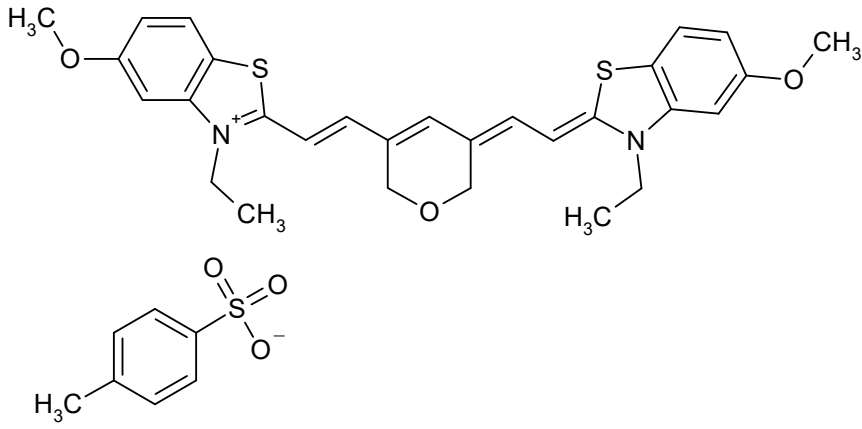
C₃₈H₃₅IN₂S₂

710.7485



S01368

CAS #
328063-95-2



Absorption

Methanol

782 nm 235000 M-1 cm-1

nm

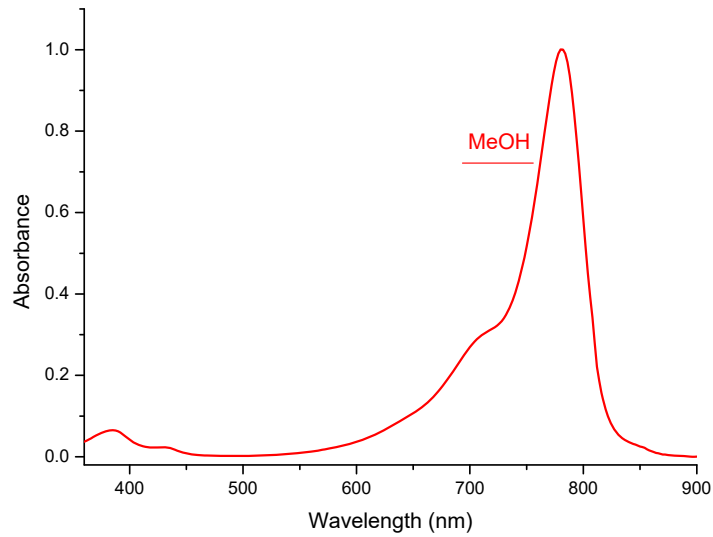
M-1 cm-1

Emission

nm

C₃₆H₃₈N₂O₆S₃

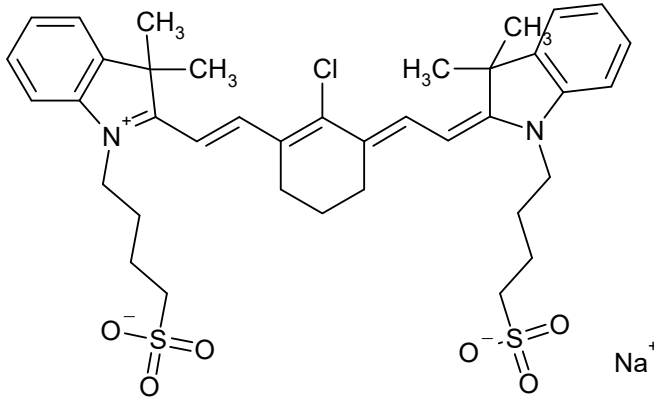
690.9061



S01397

CAS #
115970-66-6

IR-783



Absorption

	Methanol	
783	nm	252500 M-1 cm-1

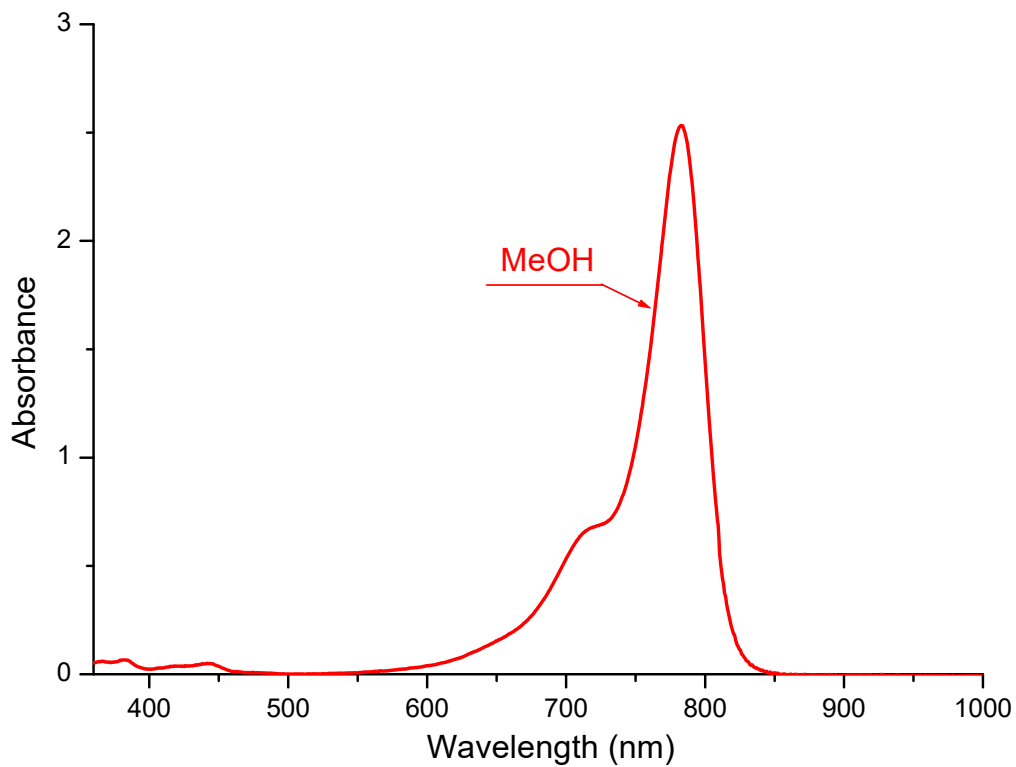
	nm	M-1 cm-1
--	----	----------

Emission

nm

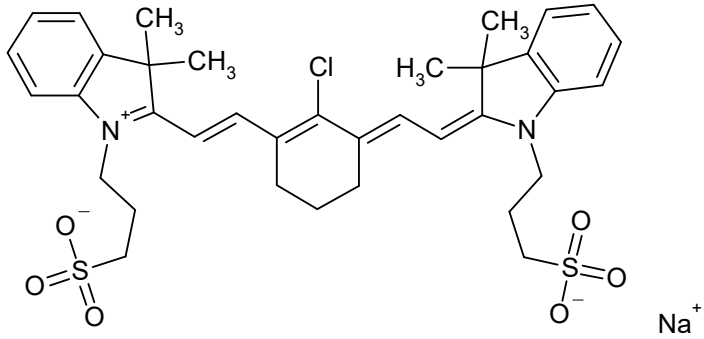
$C_{38}H_{46}ClN_2NaO_6S_2$

749.3709



S01380

CAS #
115970-63-3



Absorption

Methanol

783 nm 251000 M-1 cm-1

nm

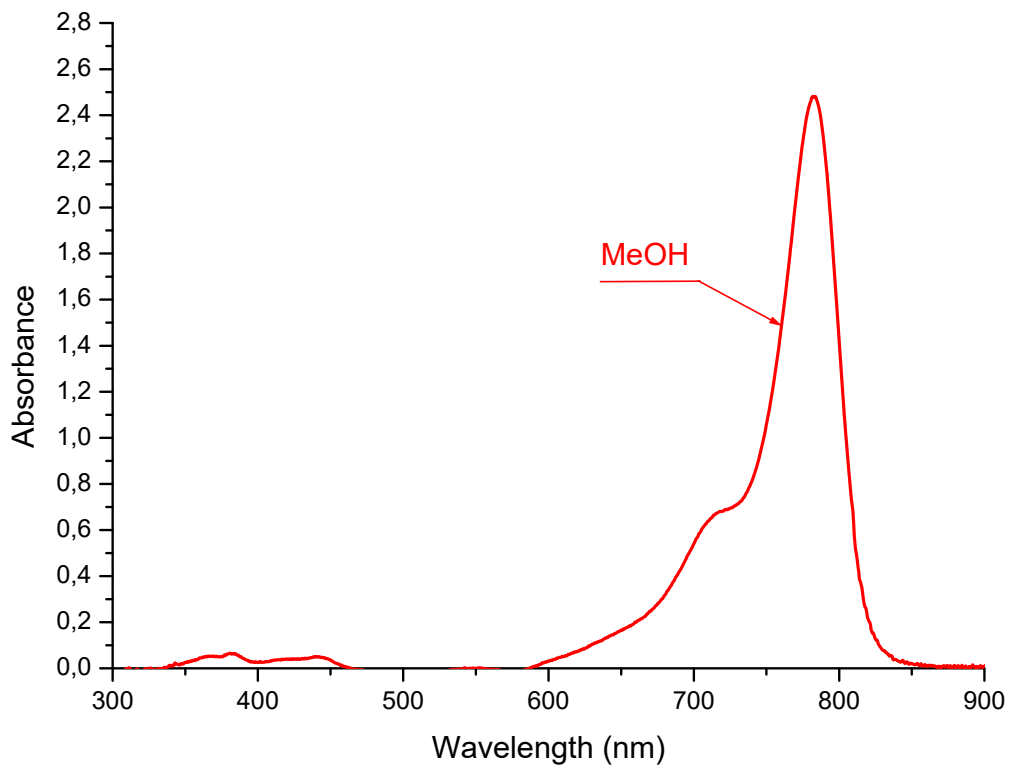
M-1 cm-1

Emission

nm

$C_{36}H_{42}ClN_2NaO_6S_2$

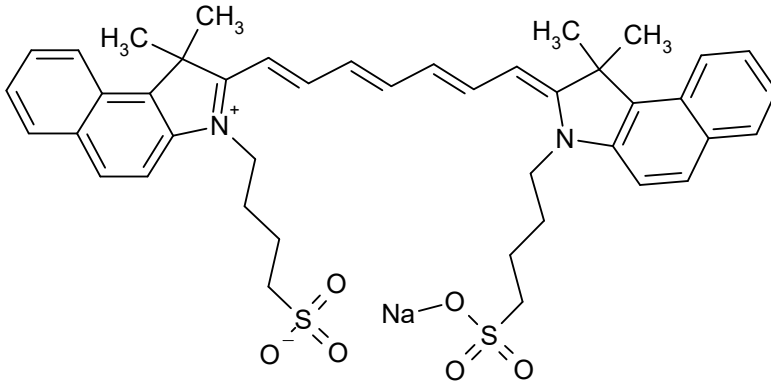
721.3167



S00201

CAS #
3599-32-4

Indocyanine green
Cardio green



Absorption

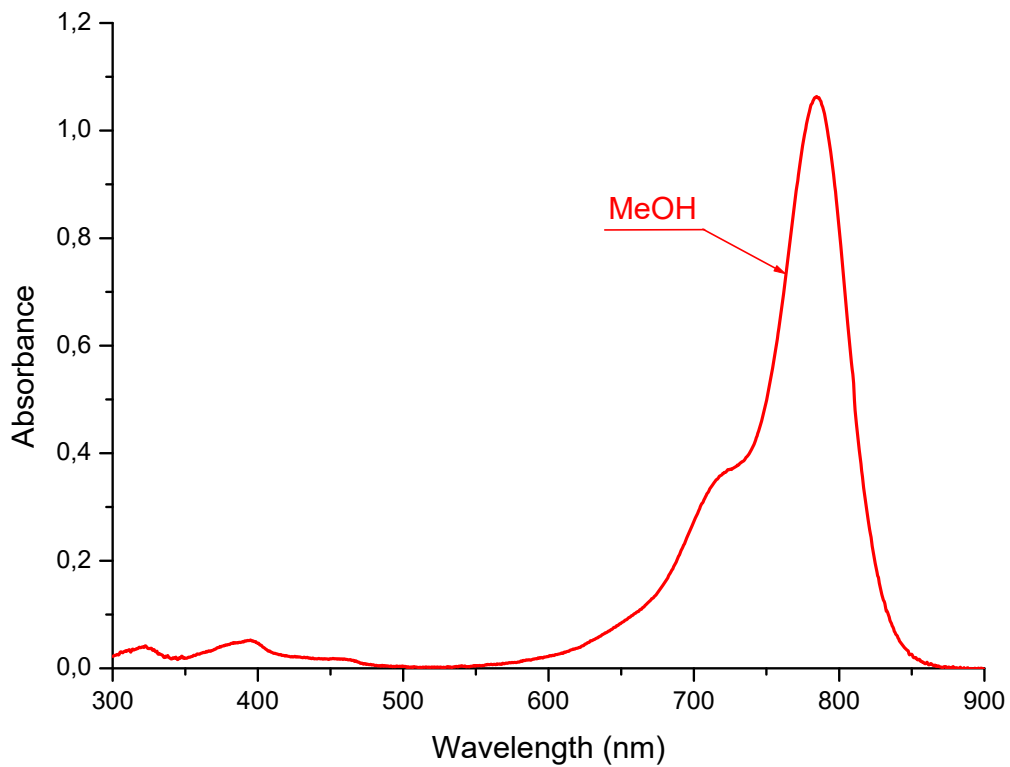
Methanol
784 nm 240000 M-1 cm-1

Emission

nm

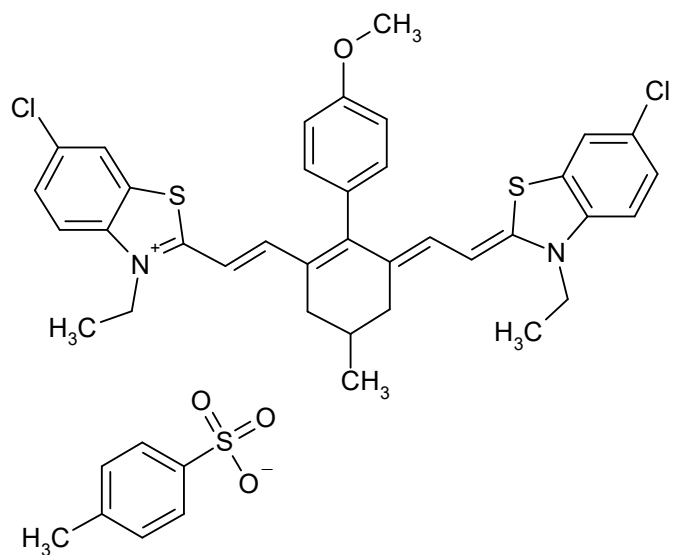
$C_{43}H_{47}N_2NaO_6S_2$

774.9816



S01363

CAS #



Absorption

Methanol
786 nm 320000 M-1 cm-1

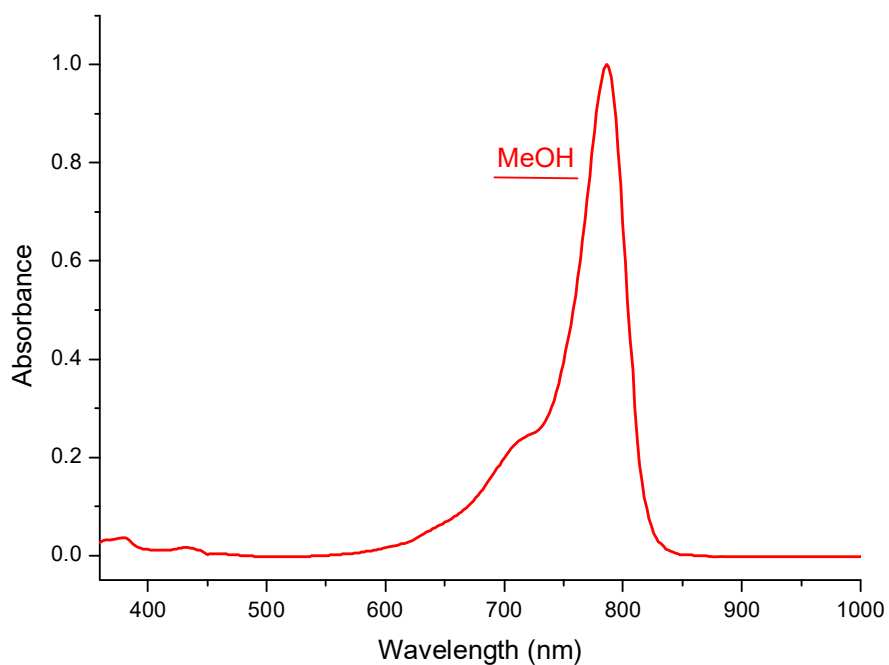
nm M-1 cm-1

Emission

nm

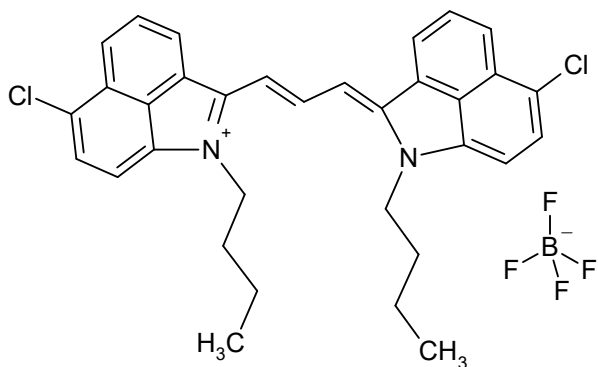
C₄₃H₄₂Cl₂N₂O₄S₃

817.9232



S01969

CAS #



Absorption

Methylene chloride

794 nm 140200 M-1 cm-1

Methanol

780 nm 125600 M-1 cm-1

Emission

nm

C₃₃H₃₁BCl₂F₄N₂

613.3390

