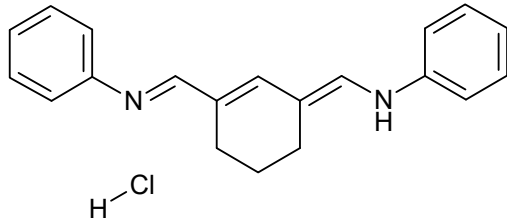


S09435

CAS #

N-[[3-(anilinomethylene)cyclohex-1-en-1-yl]methylene]-N-phenylamine hydrochloride



*Absorption*

Methylene chloride + AcOH

**500** nm M-1 cm-1

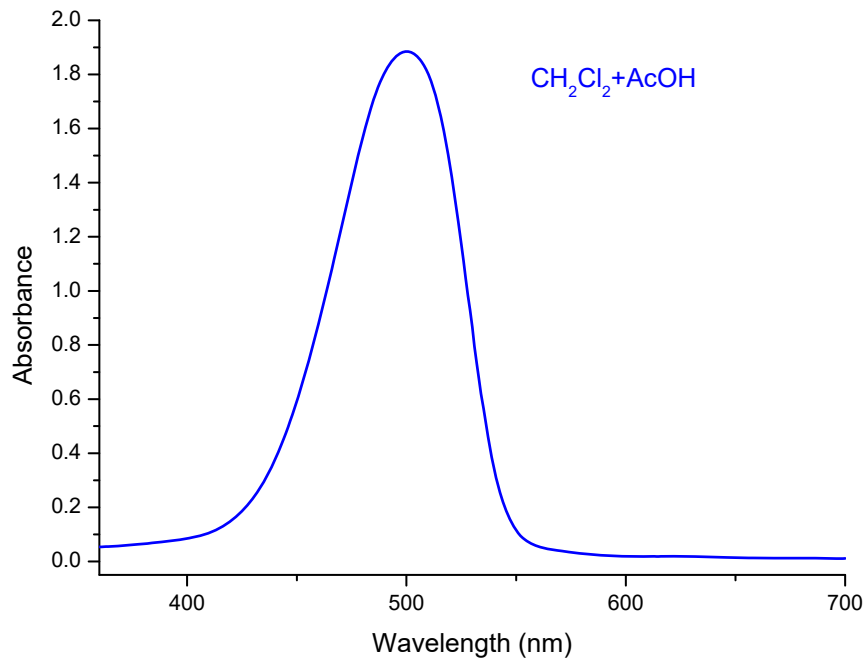
nm M-1 cm-1

*Emission*

nm

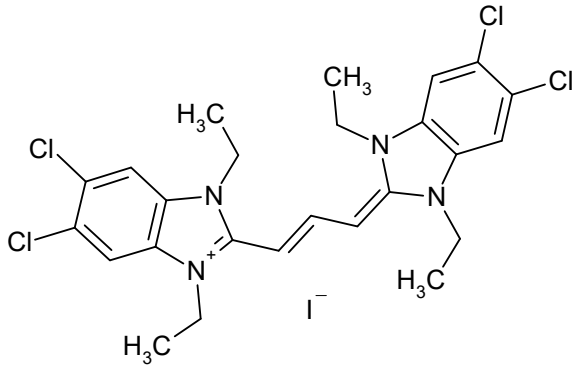
C<sub>20</sub>H<sub>21</sub>ClN<sub>2</sub>

324.8568



S01481

CAS #  
3520-43-2



*Absorption*

Methanol			
<b>515</b>	nm	202000	M-1 cm-1

---

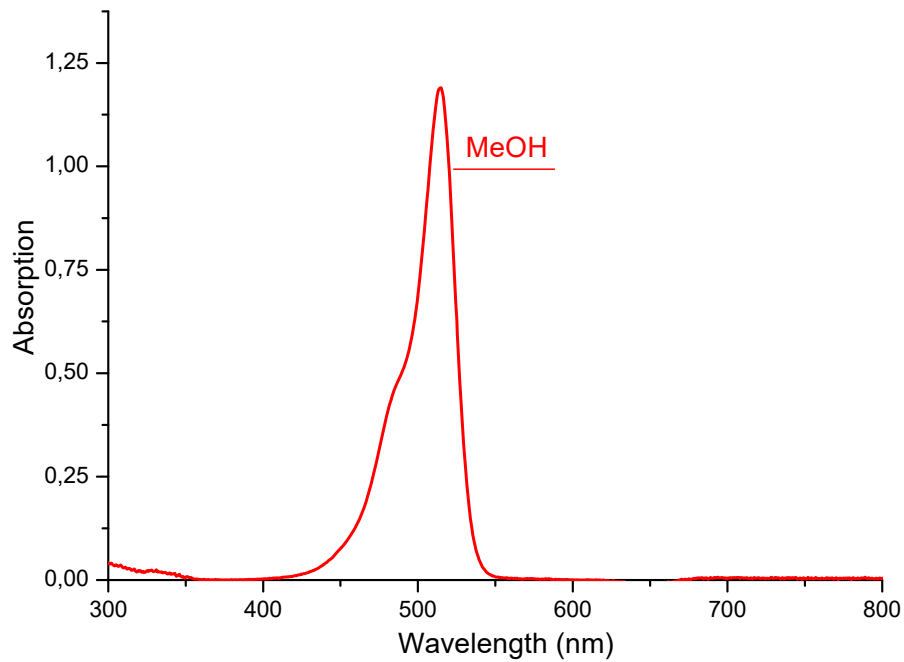
	nm		M-1 cm-1
--	----	--	----------

*Emission*

nm

C<sub>25</sub>H<sub>27</sub>Cl<sub>4</sub>IN<sub>4</sub>

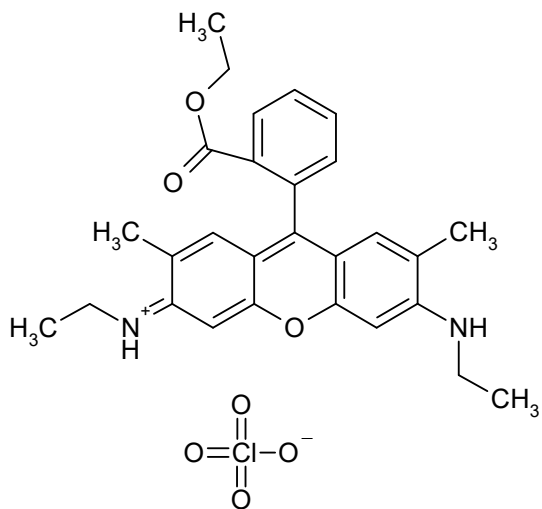
652.2371



S00238

CAS #  
13161-28-9

Rhodamine 6G Perchlorate



*Absorption*

	Methanol	
<b>528</b>	nm	108000 M-1 cm-1

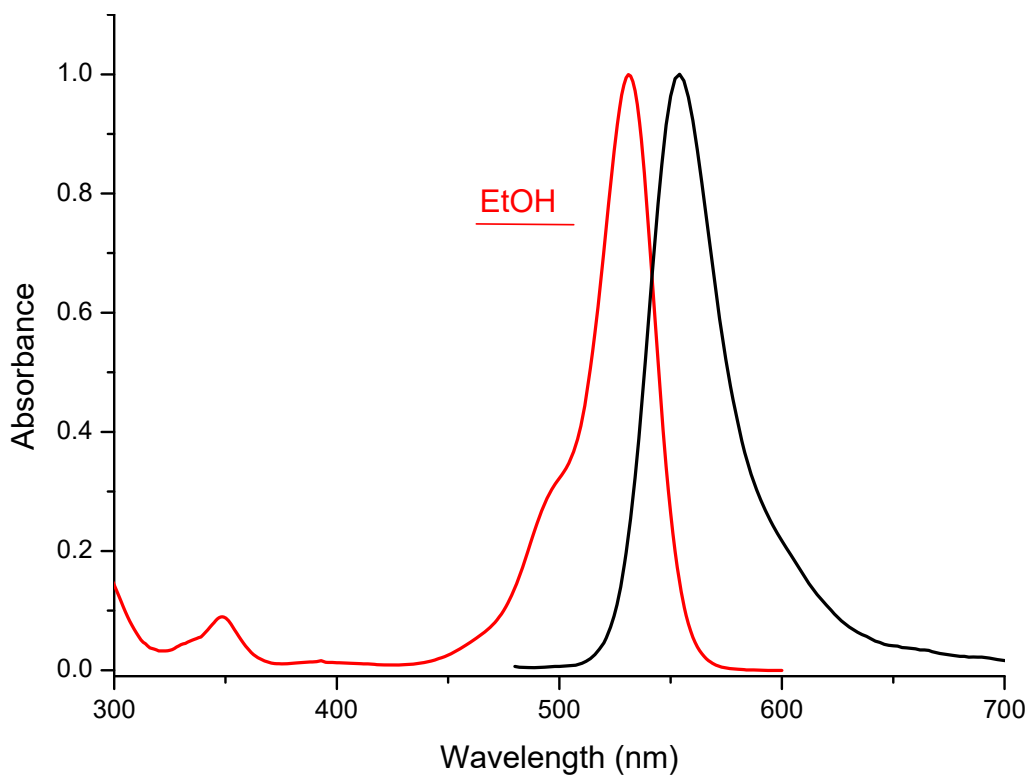
	Ethanol	
<b>531</b>	nm	M-1 cm-1

*Emission*

	Ethanol
554	nm

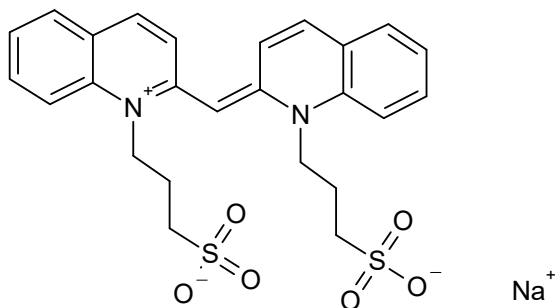
$C_{28}H_{31}ClN_2O_7$

543.0215



S11972

CAS #



Absorption

	Methanol	
<b>528</b>	nm	63000 M-1 cm-1

---

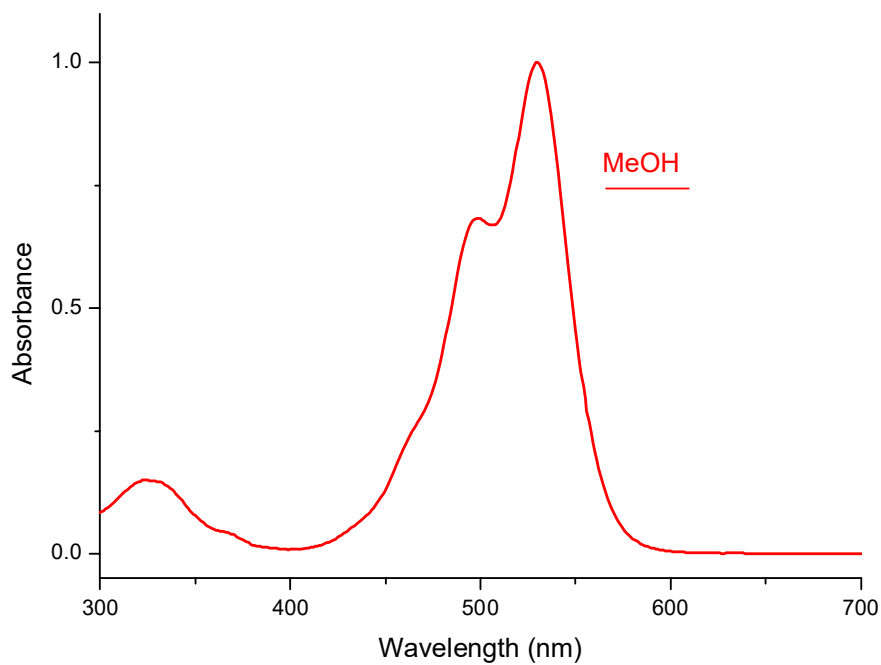
	nm	M-1 cm-1
--	----	----------

Emission

nm

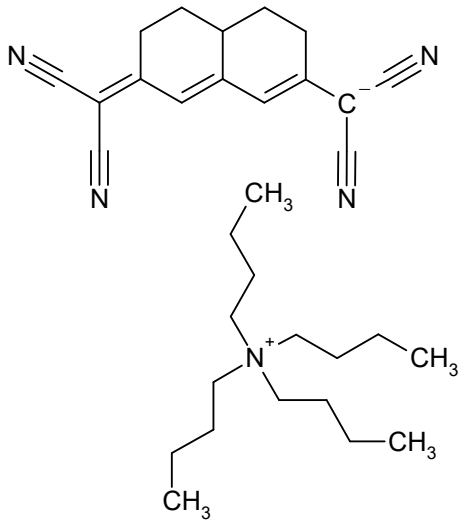
C<sub>25</sub>H<sub>25</sub>N<sub>2</sub>NaO<sub>6</sub>S<sub>2</sub>

536.6056



S03931

CAS #



Absorption

Ethanol

**546**

nm

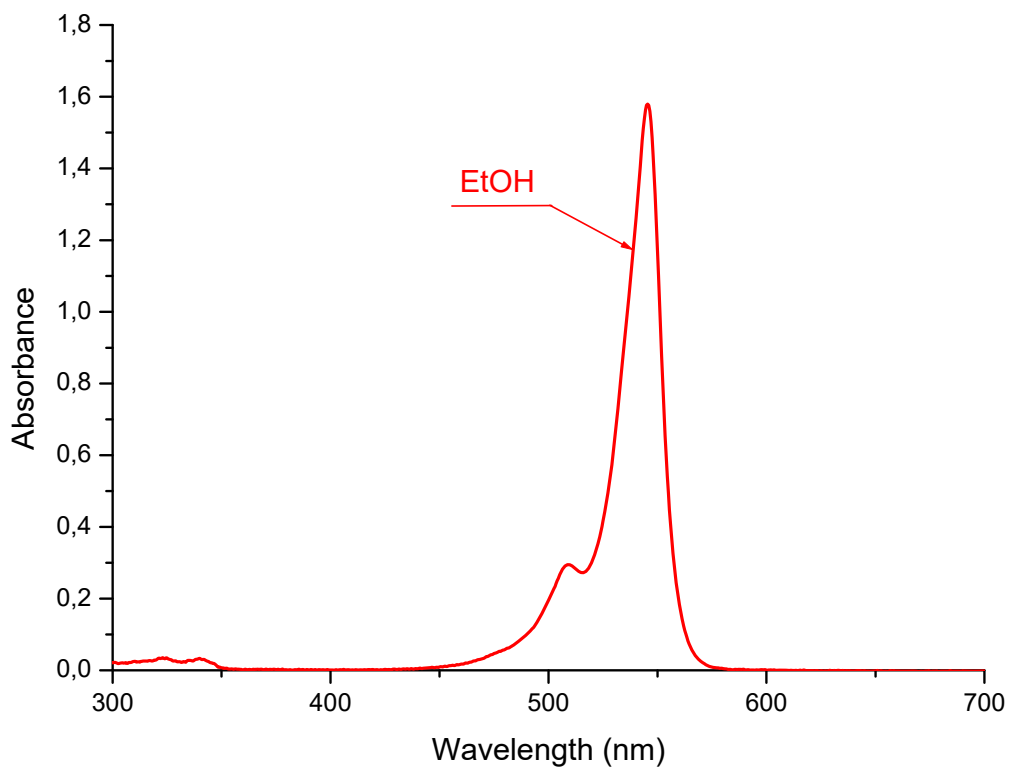
M-1 cm-1

Emission

nm

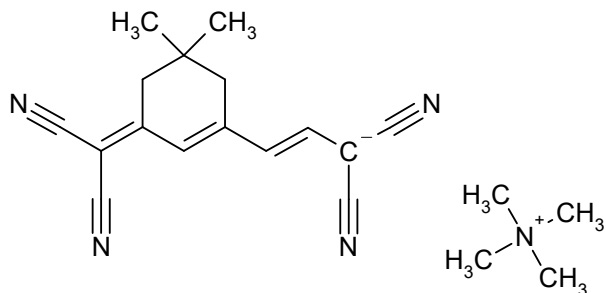
$C_{32}H_{47}N_5$

501.7649



S03932

CAS #



Absorption

Ethanol

**557**

nm

M-1 cm-1

nm

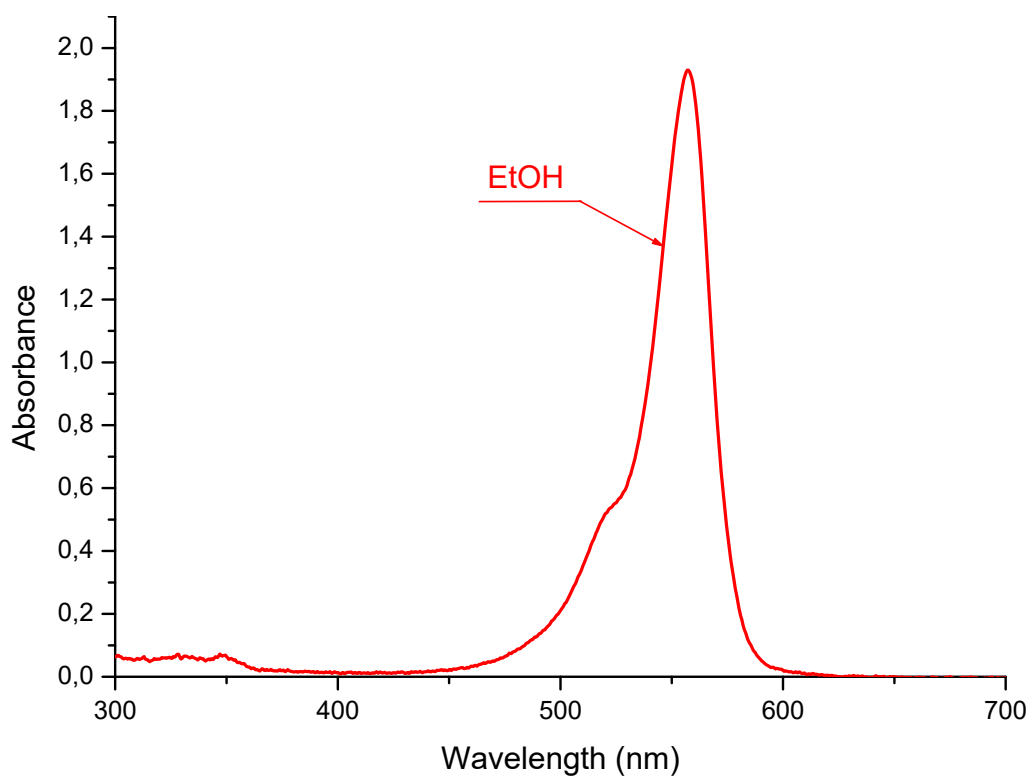
M-1 cm-1

Emission

nm

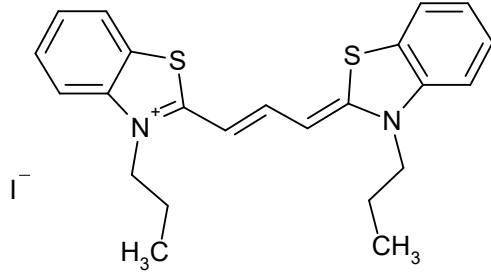
C<sub>20</sub>H<sub>25</sub>N<sub>5</sub>

335.4558



S01433

CAS #  
53336-12-2



*Absorption*

Methanol			
<b>559</b>	nm	158000	M-1 cm-1

---

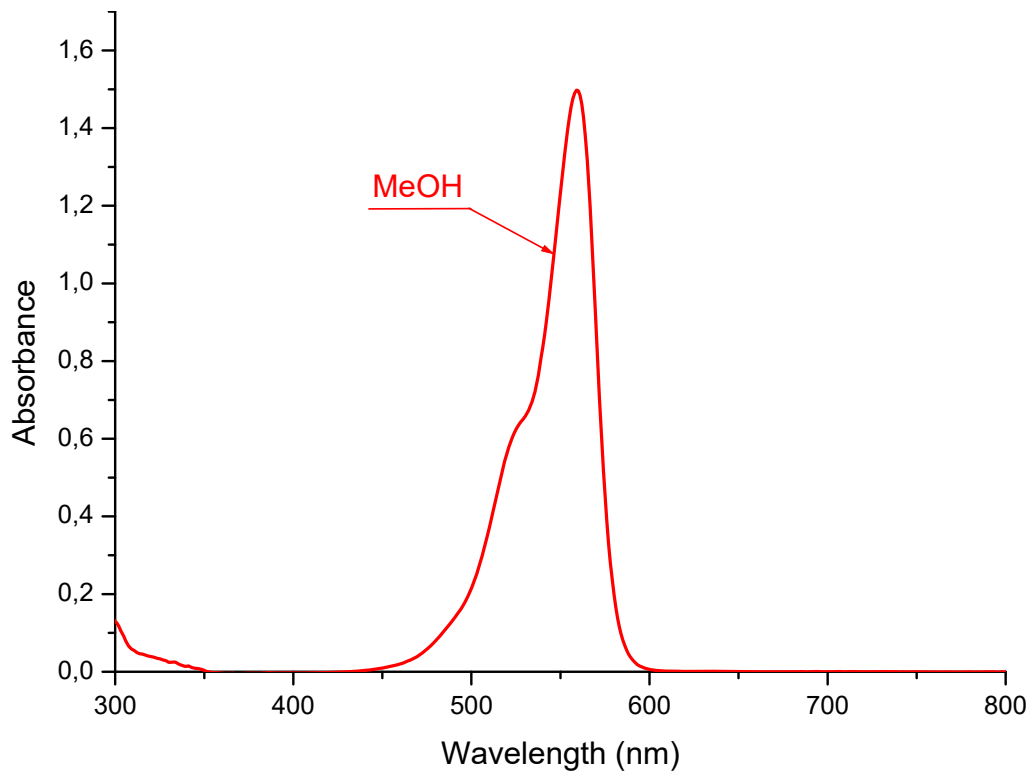
	nm		M-1 cm-1
--	----	--	----------

*Emission*

nm

$C_{23}H_{25}IN_2S_2$

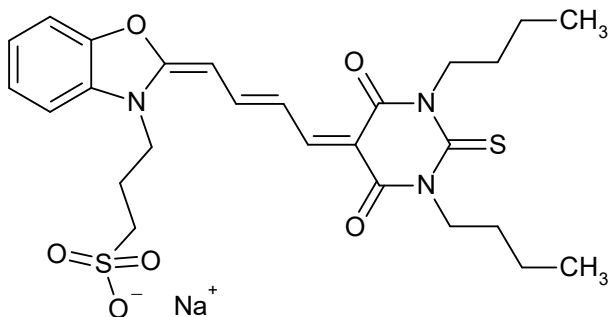
520.5015



S03038

CAS #  
62796-23-0

Merocyanine 540



*Absorption*

	Methanol		
<b>560</b>	nm	170000	M-1 cm-1

---

	nm		M-1 cm-1
--	----	--	----------

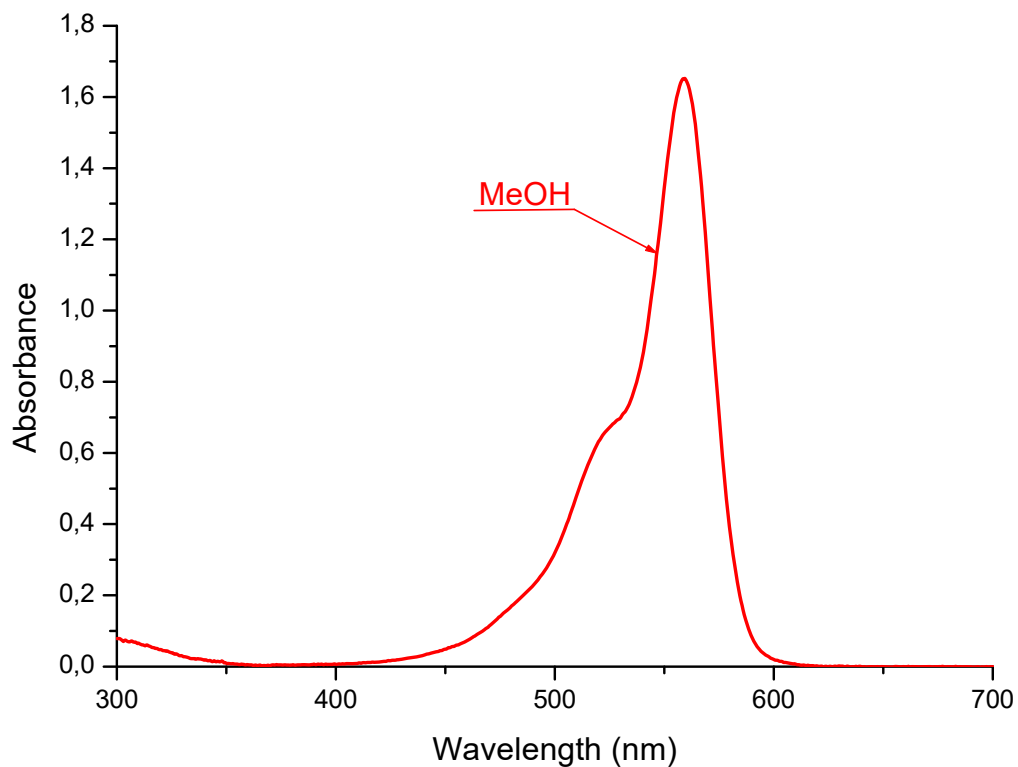
---

*Emission*

	Methanol	
578	nm	

$\text{C}_{26}\text{H}_{32}\text{N}_3\text{NaO}_6\text{S}_2$

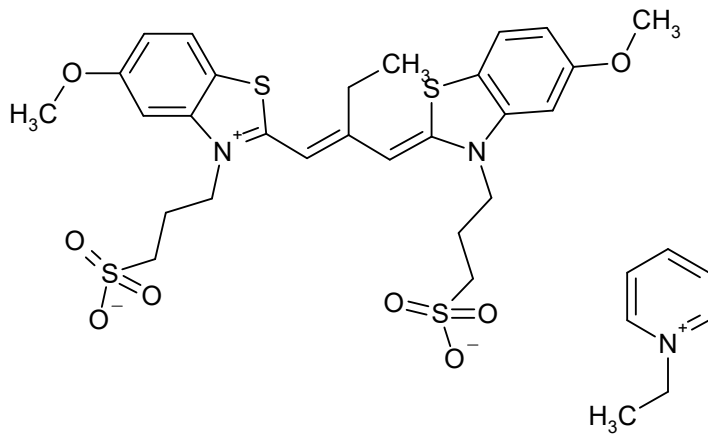
569.6792





S09423

CAS #



Absorption

	Ethanol	
<b>565</b>	nm	95000 M-1 cm-1

---

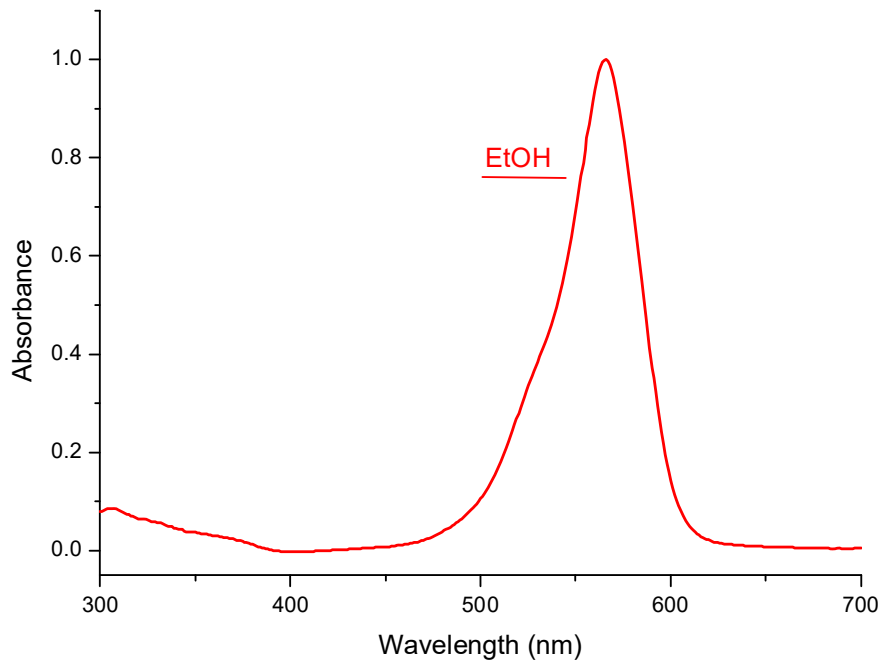
	nm	M-1 cm-1
--	----	----------

Emission

nm

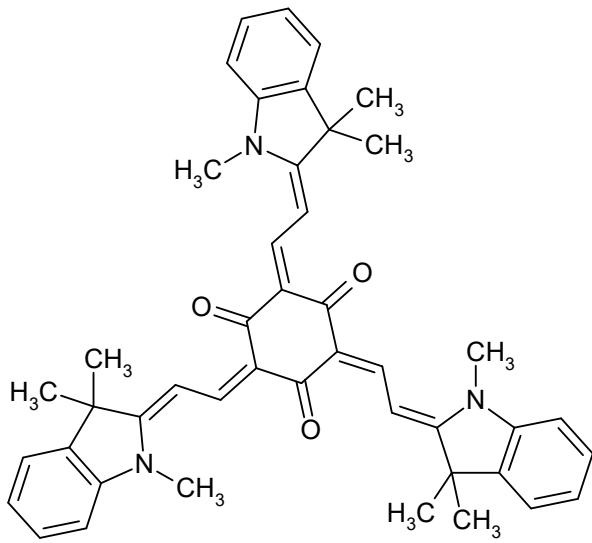
$C_{34}H_{41}N_3O_8S_4$

747.9772



S04208

CAS #



Absorption

	Methanol		
<b>575</b>	nm	189000	M-1 cm-1

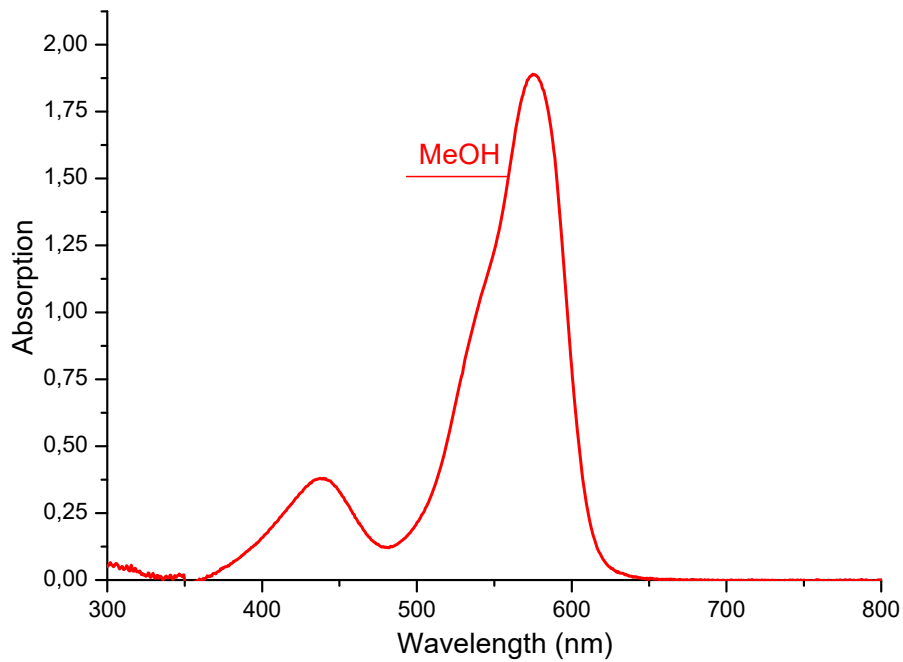
	Methanol		
<b>437</b>	nm	38000	M-1 cm-1

Emission

nm

C<sub>45</sub>H<sub>45</sub>N<sub>3</sub>O<sub>3</sub>

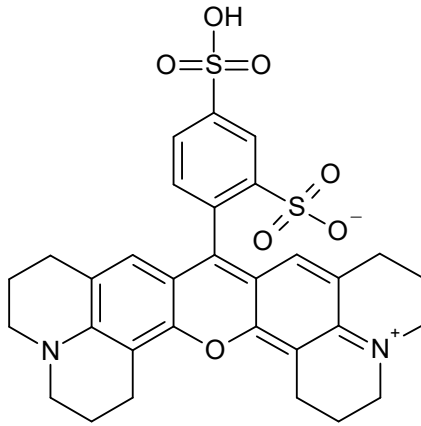
675.8787



S00278

CAS #  
60311-02-6

Sulforhodamine 101



*Absorption*

Ethanol

**578** nm 111000 M-1 cm-1

nm

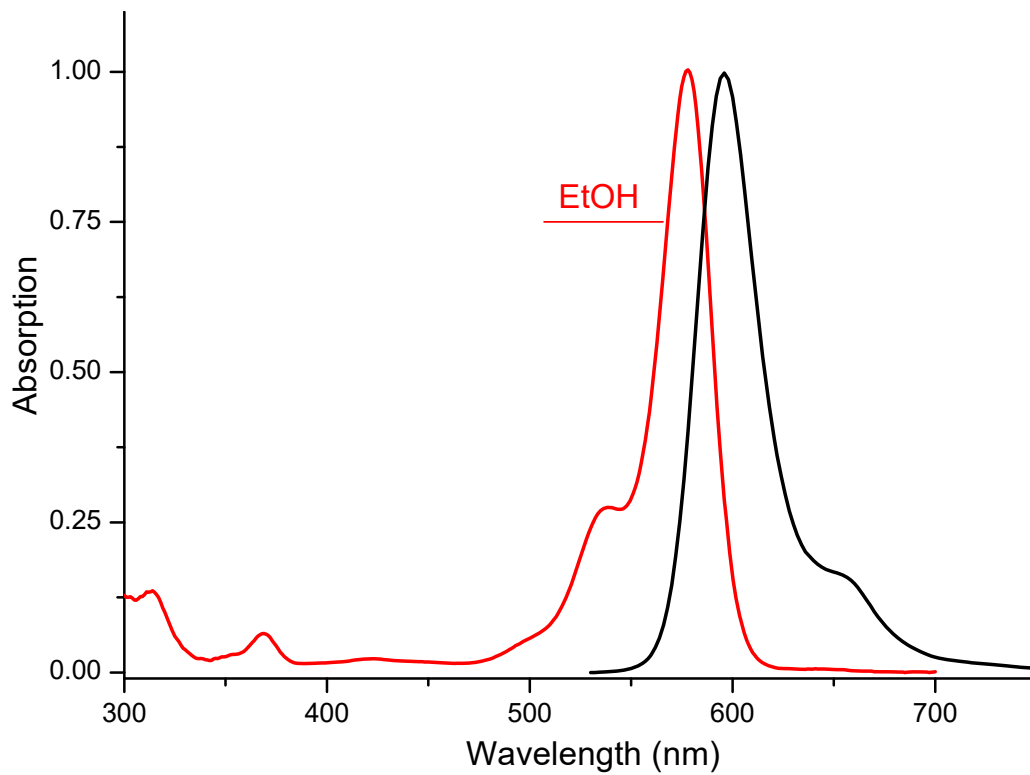
M-1 cm-1

*Emission*

596 nm

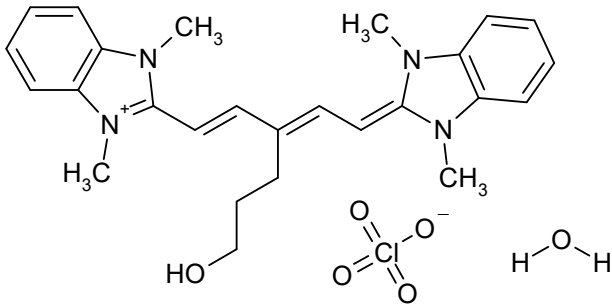
C<sub>31</sub>H<sub>30</sub>N<sub>2</sub>O<sub>7</sub>S<sub>2</sub>

606.7220



S01148

CAS #



Absorption

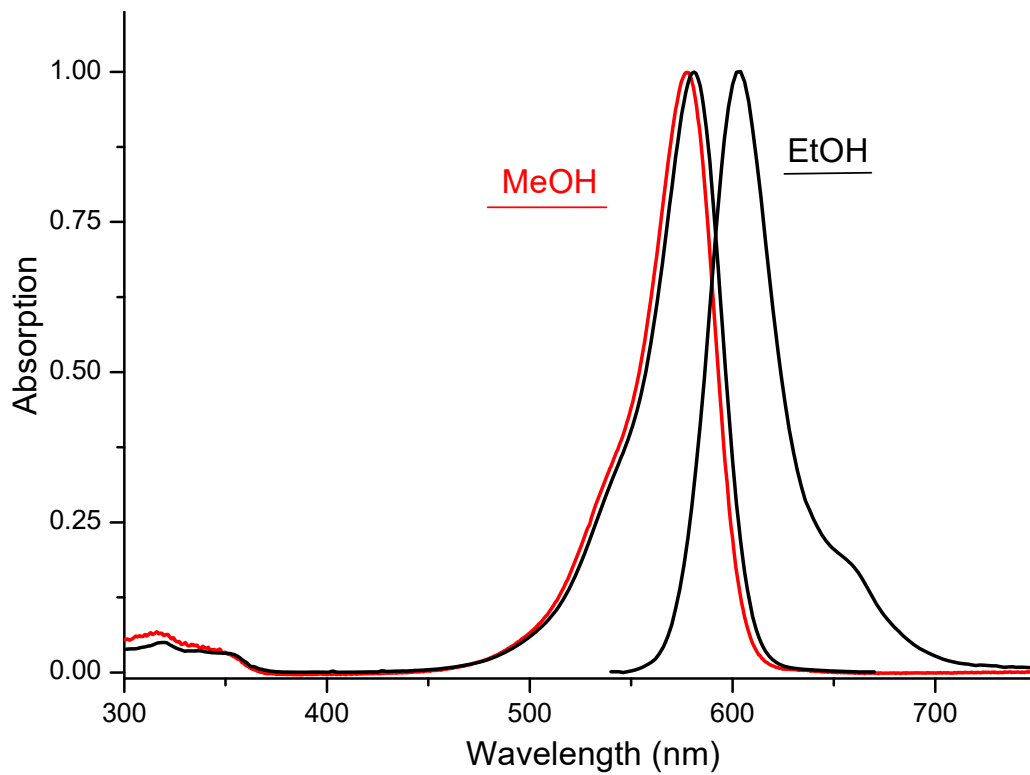
	Methanol		
<b>578</b>	nm	175000	M-1 cm-1
<hr/>			
	Ethanol		
<b>581</b>	nm		M-1 cm-1

Emission

	Ethanol
603	nm

C<sub>26</sub>H<sub>33</sub>ClN<sub>4</sub>O<sub>6</sub>

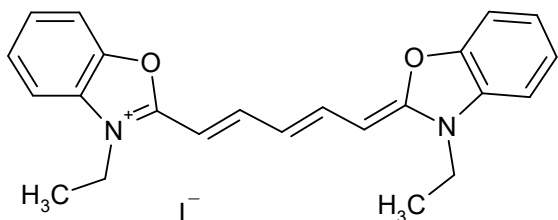
533.0291



S01871

CAS #  
14806-50-9

DODCI



*Absorption*

Methanol			
<b>579</b>	nm	234500	M-1 cm-1

---

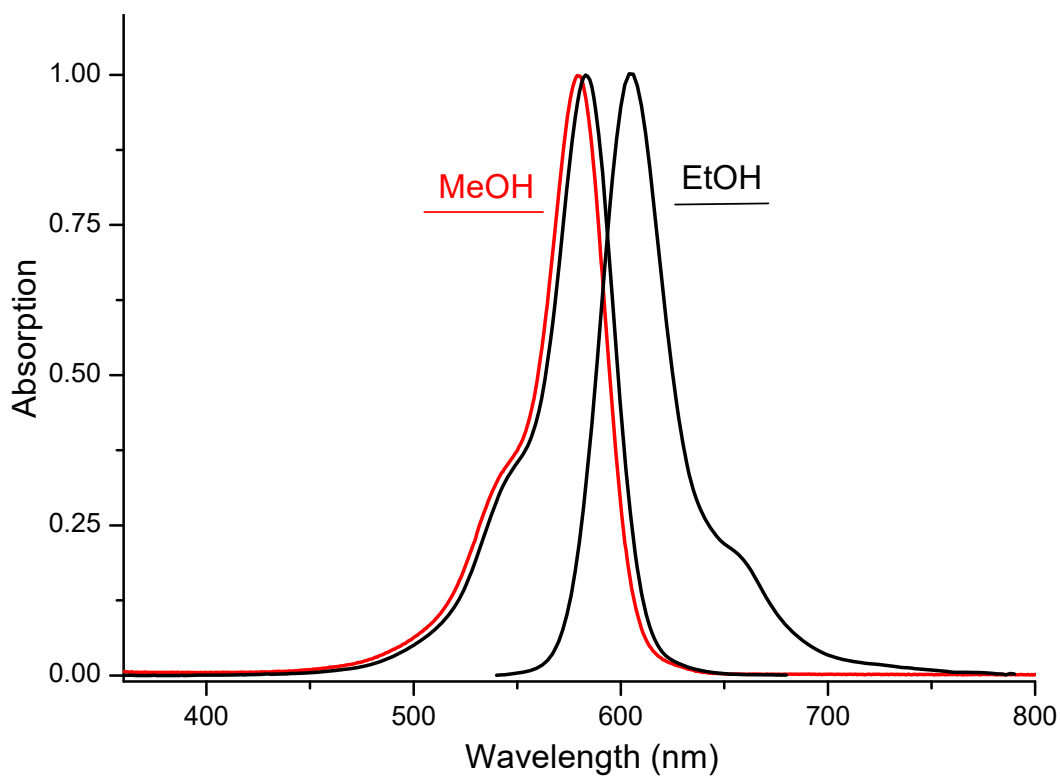
Ethanol			
<b>583</b>	nm		M-1 cm-1

*Emission*

Ethanol	
605	nm

C<sub>23</sub>H<sub>23</sub>N<sub>2</sub>O<sub>2</sub>

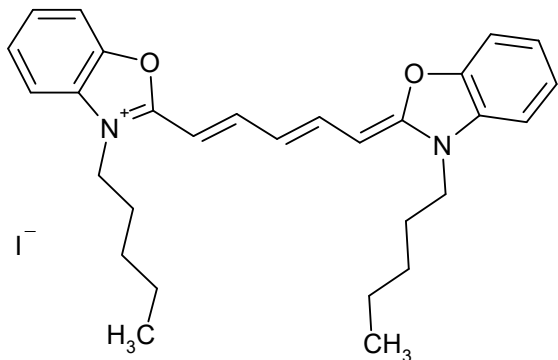
486.3564



S01234

CAS #  
53213-92-6

3,3'-Di-n-pentylloxadicarbocyanine iodide



Absorption

	Methanol		
<b>582</b>	nm	233000	M-1 cm-1

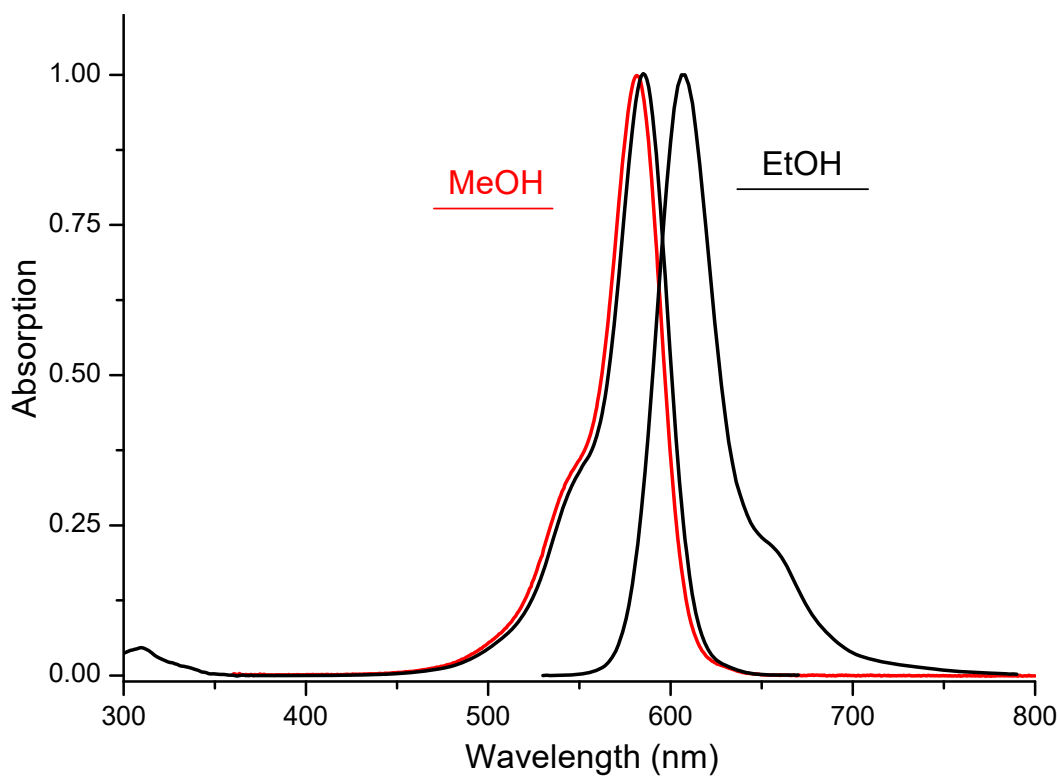
	Ethanol		
<b>585</b>	nm		M-1 cm-1

Emission

	Ethanol	
607	nm	

$C_{29}H_{35}IN_2O_2$

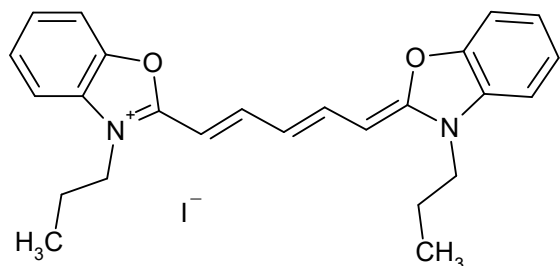
570.5189



S01229

CAS #  
53213-90-4

3,3'-Dipropyloxadicyanine iodide



*Absorption*

	Methanol		
<b>582</b>	nm	238000	M-1 cm-1

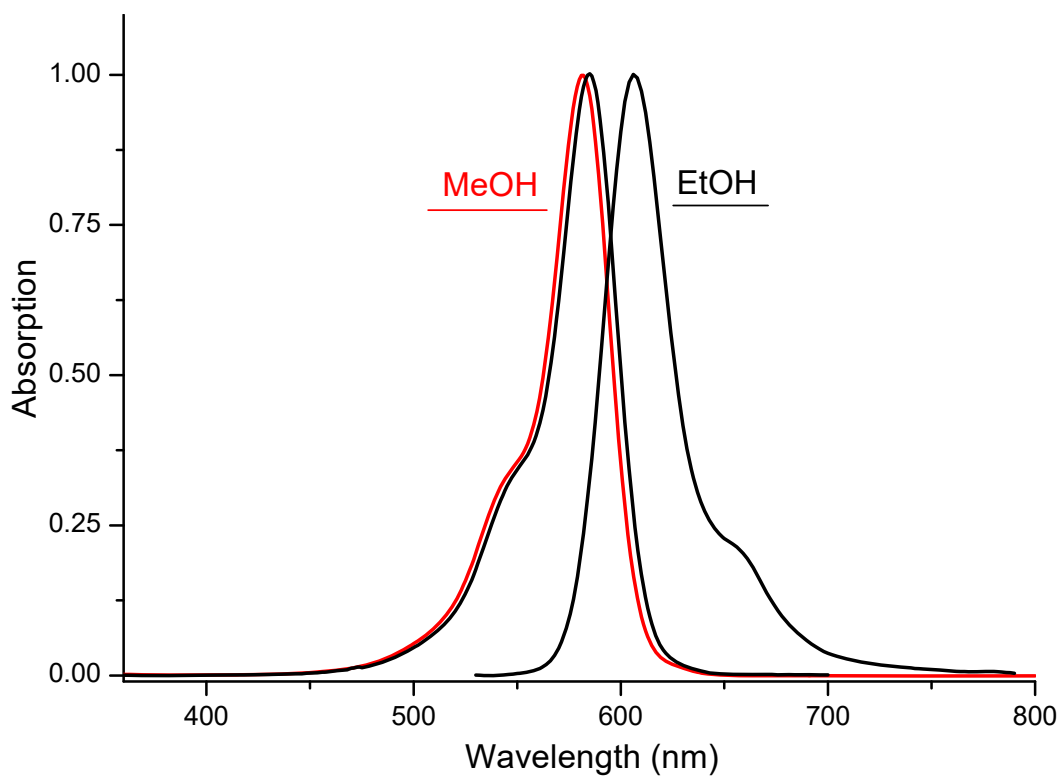
	Ethanol		
<b>585</b>	nm		M-1 cm-1

*Emission*

	Ethanol
606	nm

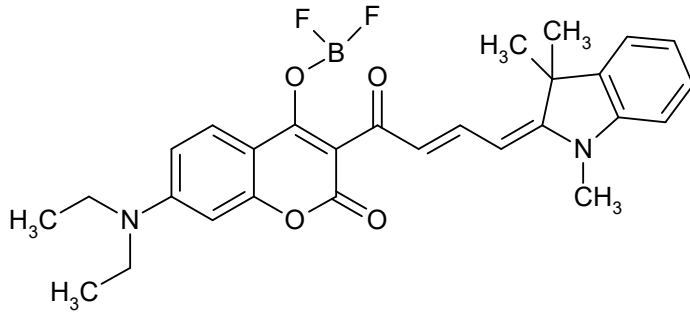
C<sub>25</sub>H<sub>27</sub>I<sub>N</sub><sub>2</sub>O<sub>2</sub>

514.4105



S03449

CAS #



*Absorption*

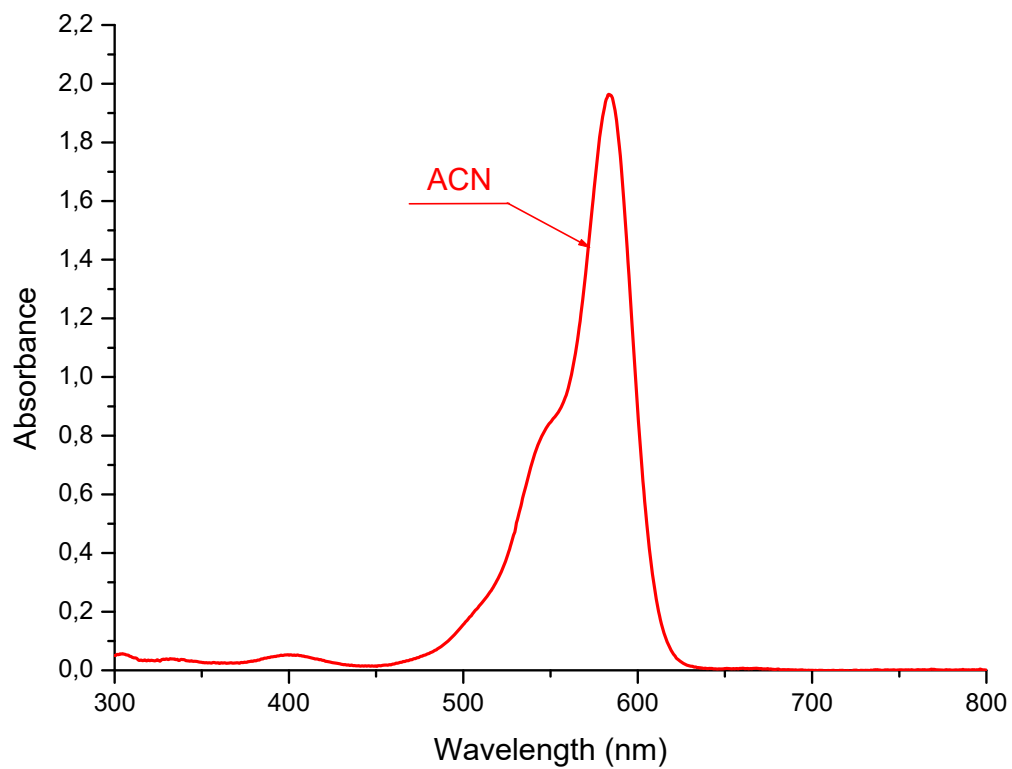
	Acetonitrile		
<b>584</b>	nm	185000	M-1 cm-1
	nm		M-1 cm-1

*Emission*

	Acetonitrile
607	nm

C<sub>28</sub>H<sub>29</sub>BF<sub>2</sub>N<sub>2</sub>O<sub>4</sub>

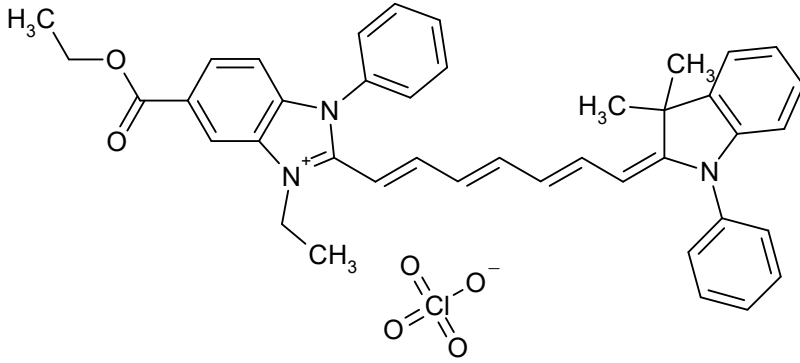
506.3621





S01247

CAS #  
1260162-30-8



Absorption

	Methanol	
<b>591</b>	nm	60000
		M-1 cm-1

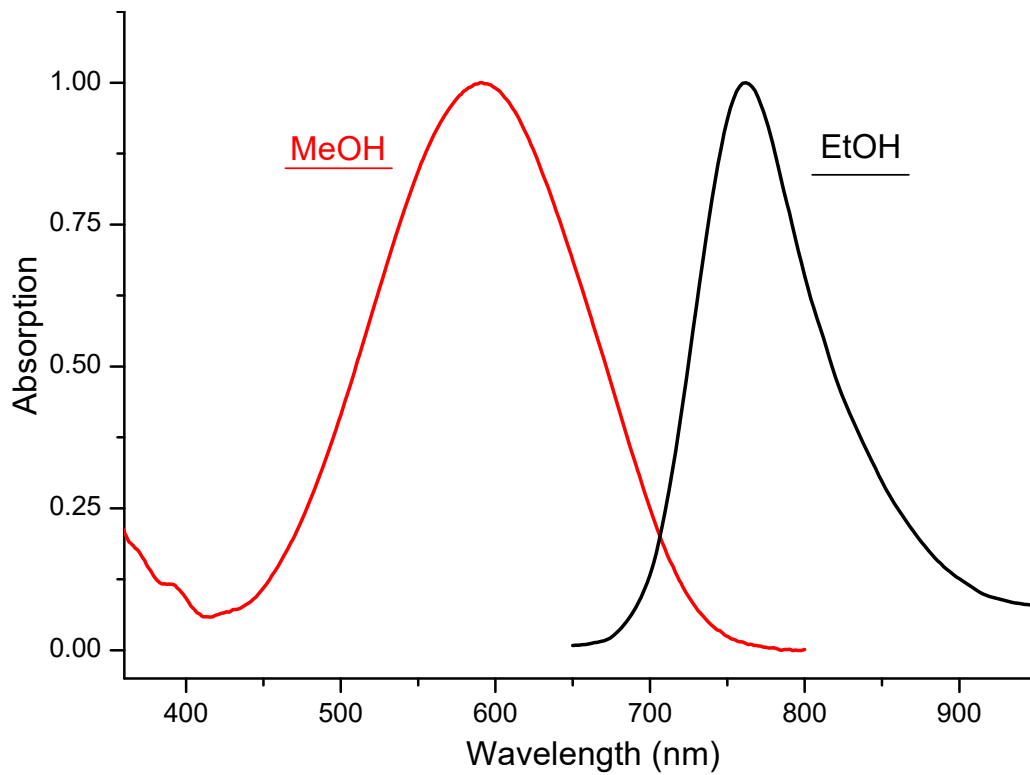
	nm	M-1 cm-1
--	----	----------

Emission

	Ethanol
762	nm

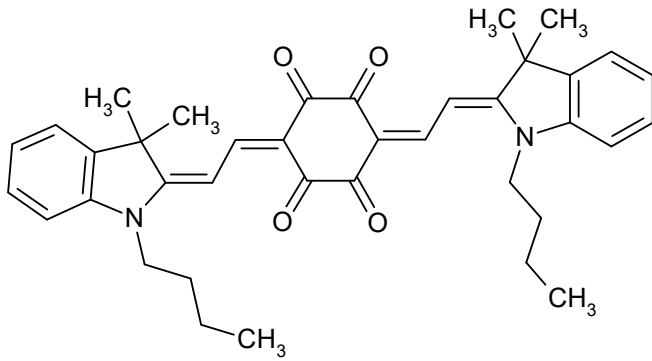
$C_{41}H_{40}ClN_3O_6$

706.2454



S04193

CAS #



Absorption

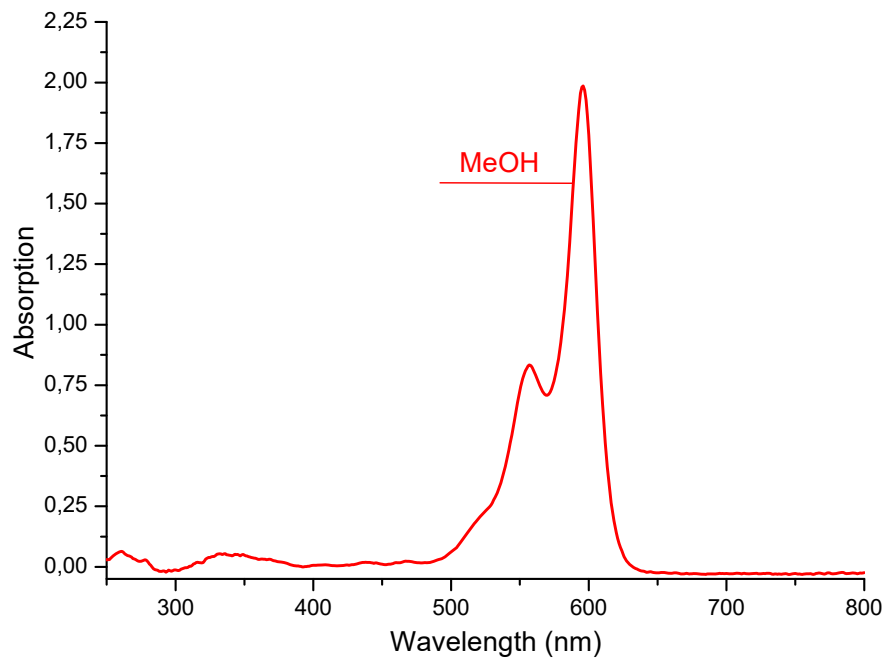
	Methanol		
<b>596</b>	nm	195900	M-1 cm-1
	nm		M-1 cm-1

Emission

nm

$C_{38}H_{42}N_2O_4$

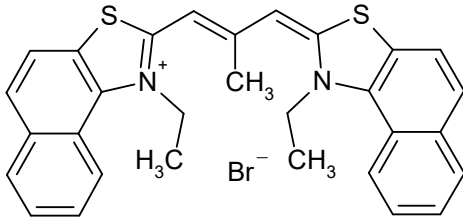
590.7694



S00207

CAS #  
7423-31-6

Stains-All



*Absorption*

Chloroform			
<b>598</b>	nm	175000	M-1 cm-1
_____		nm	M-1 cm-1

*Emission*

nm

C<sub>30</sub>H<sub>27</sub>BrN<sub>2</sub>S<sub>2</sub>

559.5951

