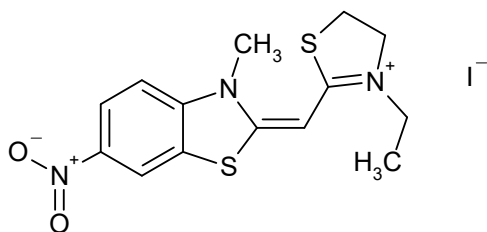


S04303

CAS #



Absorption

Methanol			
403	nm	56000	M-1 cm-1

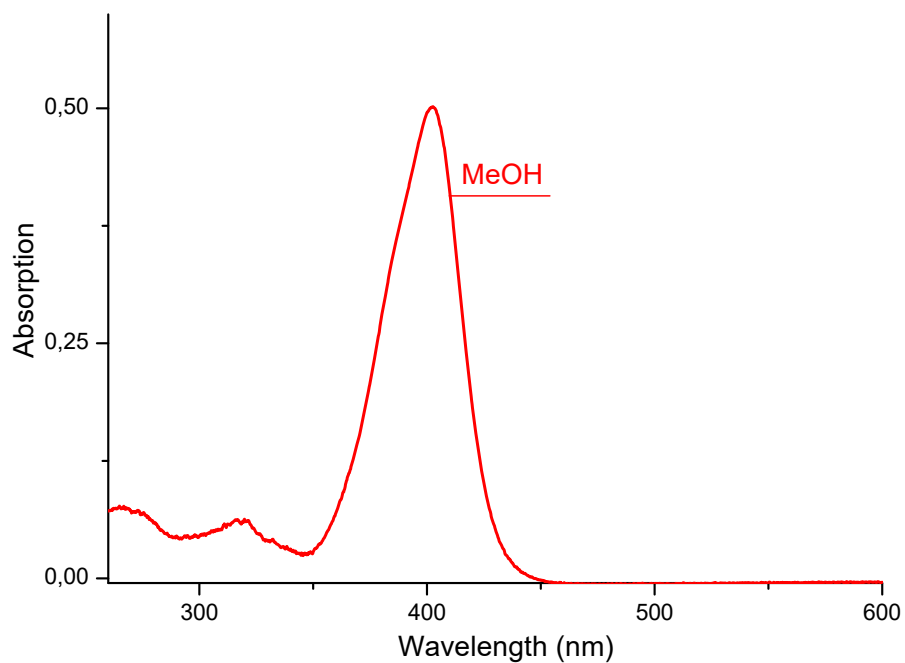
	nm		M-1 cm-1
--	----	--	----------

Emission

nm

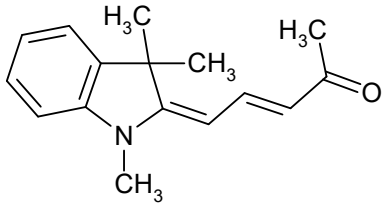
C₁₄H₁₆IN₃O₂S₂

449.3349



S01115

CAS #
53704-20-4



Absorption

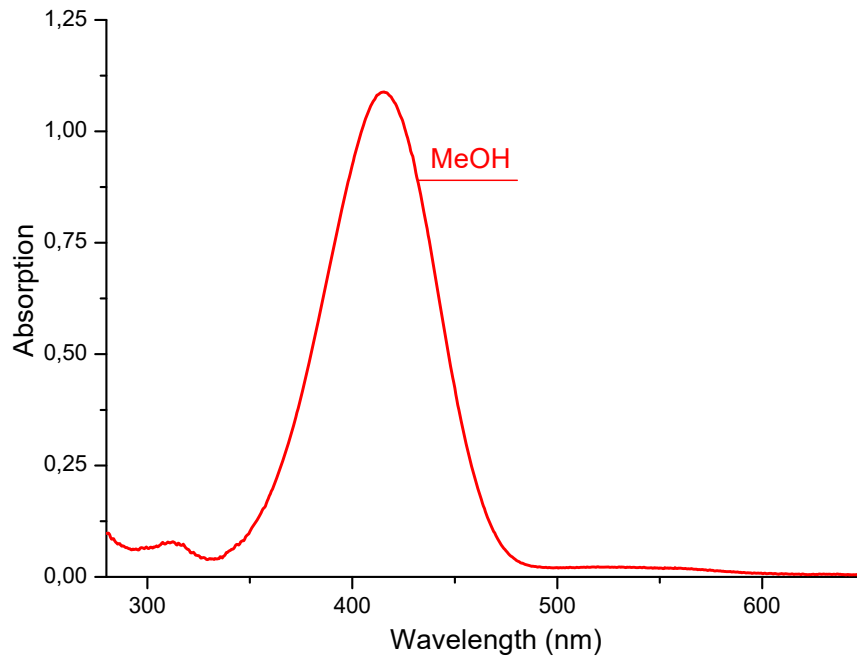
Methanol			
416	nm	46500	M-1 cm-1
_____		nm	M-1 cm-1

Emission

nm

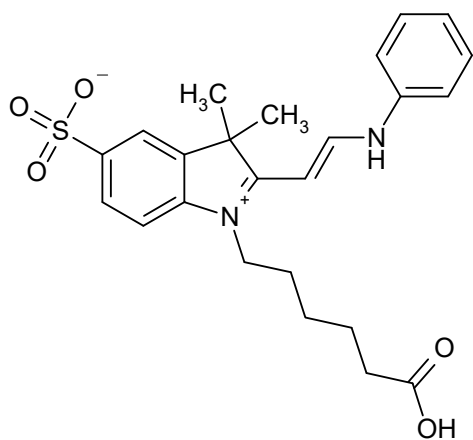
C₁₆H₁₉NO

241.3359



S02255

CAS #



Absorption

	Ethanol	
418	nm	48000 M-1 cm-1

Emission

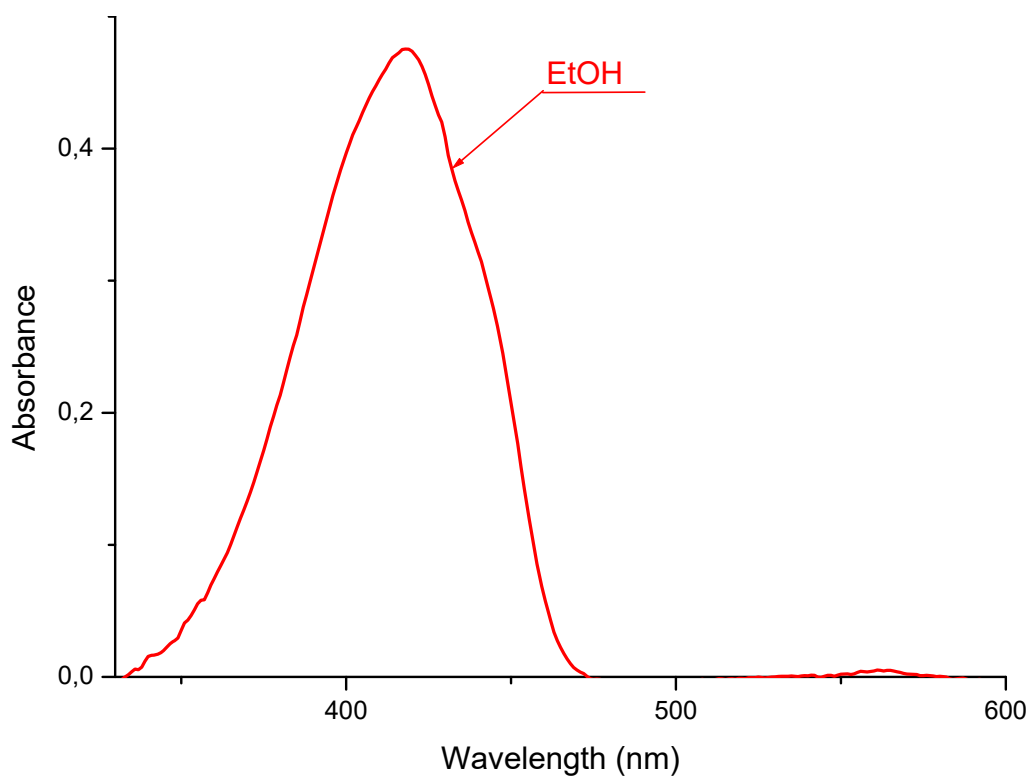
nm

M-1 cm-1

nm

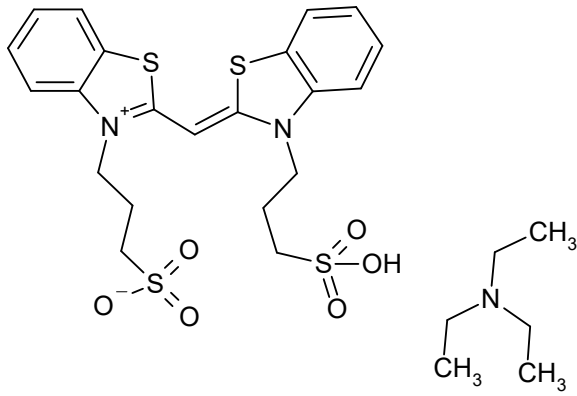
C₂₄H₂₈N₂O₅S

456.5652



S11966

CAS #



Absorption

		Ethanol	
427	nm	80000	M-1 cm-1

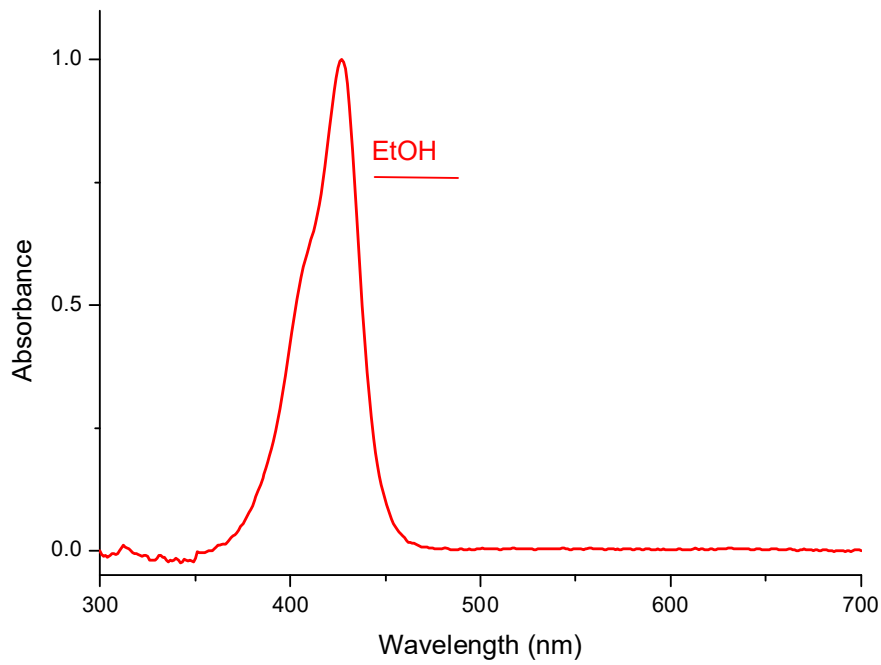
	nm	M-1 cm-1
--	----	----------

Emission

nm

C₂₇H₃₇N₃O₆S₄

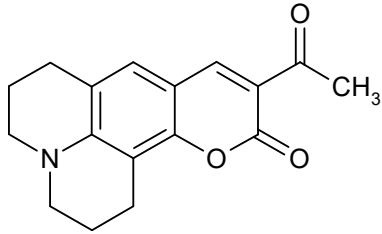
627.8684



S00244

CAS #
55804-67-6

Coumarin 334



Absorption

		Methanol	
453	nm	48000	M-1 cm-1

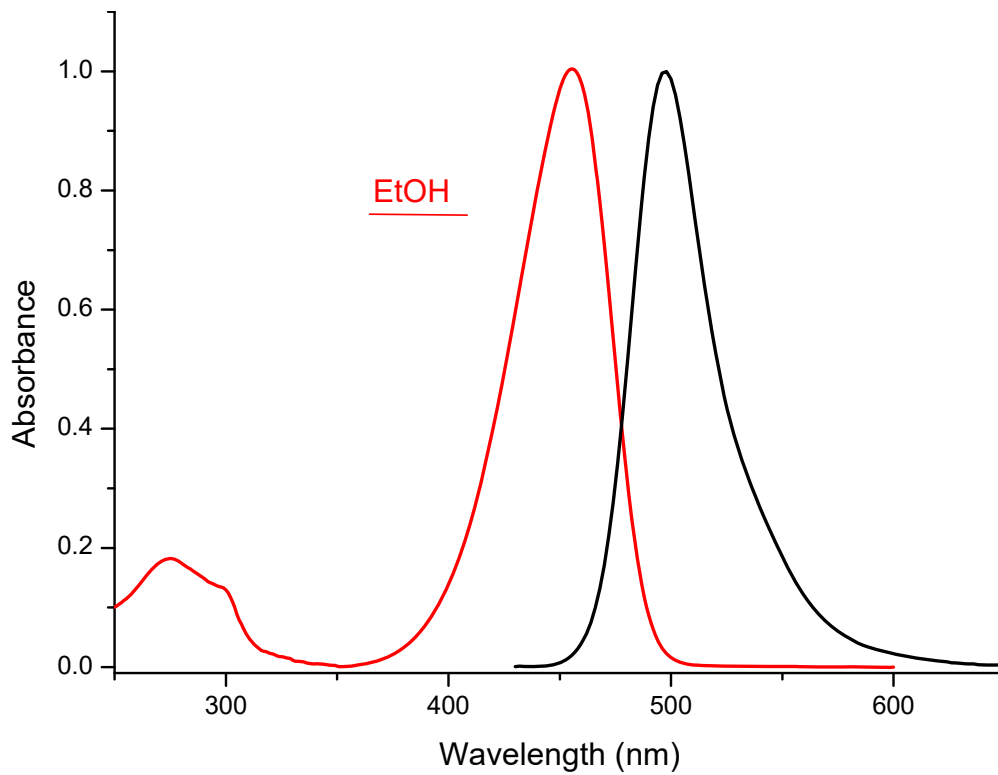
		Ethanol	
456	nm		M-1 cm-1

Emission

		Ethanol	
497	nm		

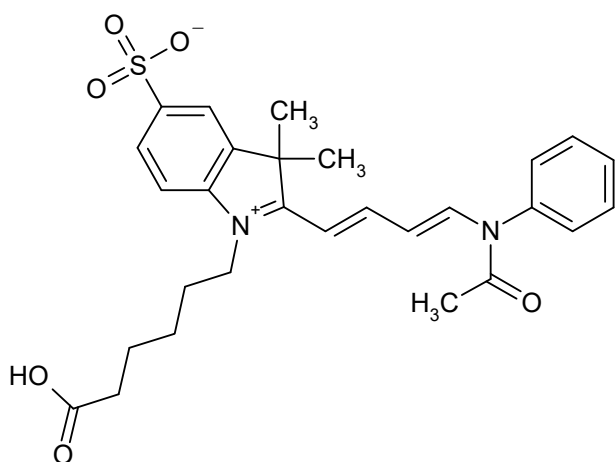
C₁₇H₁₇NO₃

283.3299



S01588

CAS #



Absorption

Acetonitrile
455 nm M-1 cm-1

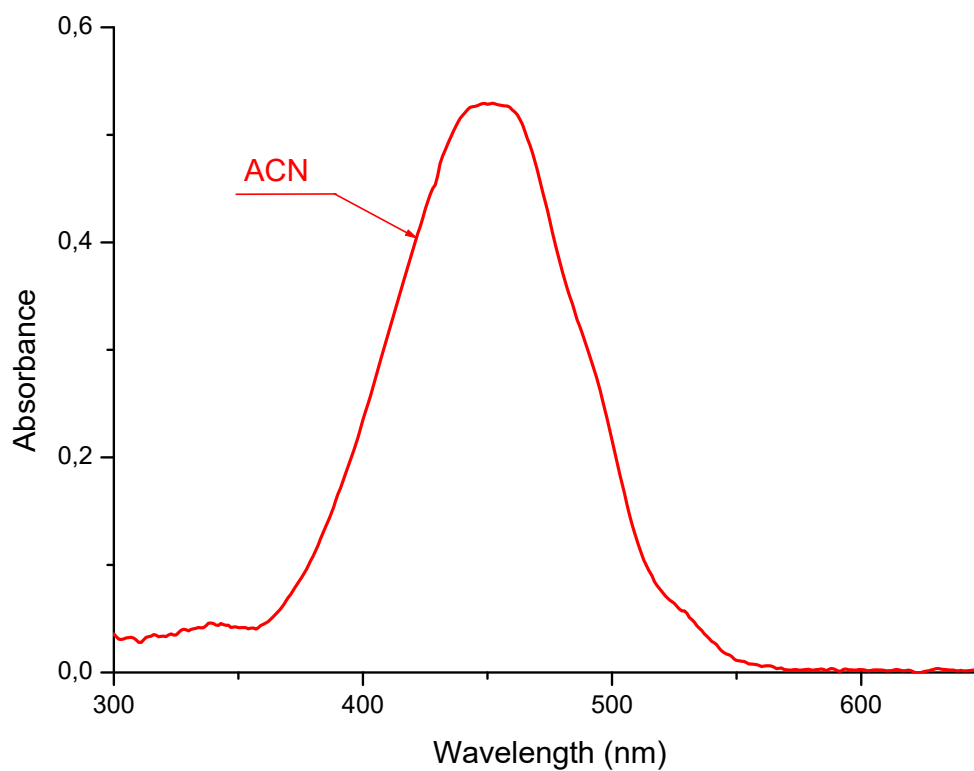
Ethanol
459 nm M-1 cm-1

Emission

nm

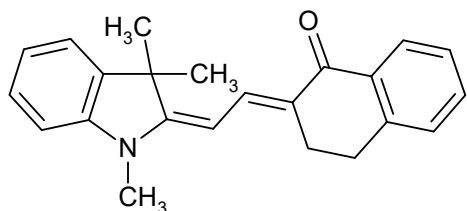
C₂₈H₃₂N₂O₆S

524.6410



S01103

CAS #
53704-25-9



Absorption

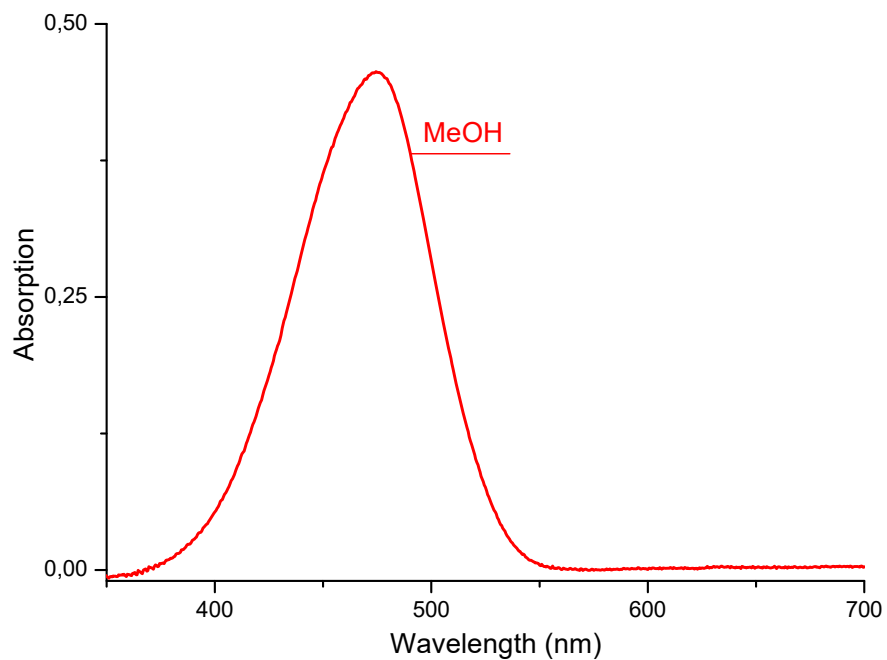
Methanol			
475	nm	47000	M-1 cm-1
_____		_____	
	nm		M-1 cm-1

Emission

nm

C₂₃H₂₃NO

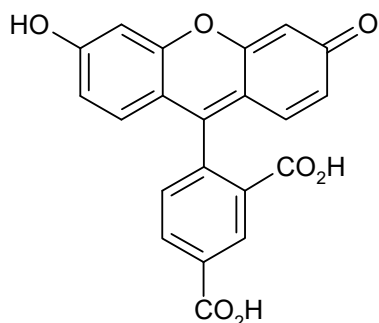
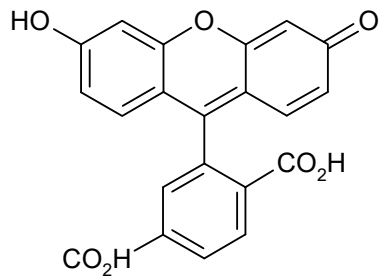
329.4459



S03985

CAS #
76823-03-5

5(6)-Carboxyfluorescein



Absorption

0.1M Tris water buffer

492 nm 80000 M-1 cm-1

nm

M-1 cm-1

Emission

0.1M Tris water buffer

519 nm

$C_{42}H_{24}O_{14}$

752.6512

