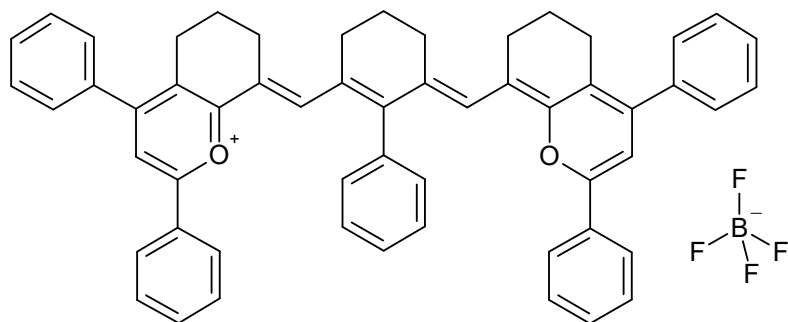


S01993

CAS #



Absorption

Methylene chloride

1100 nm 105000 M-1 cm-1

nm

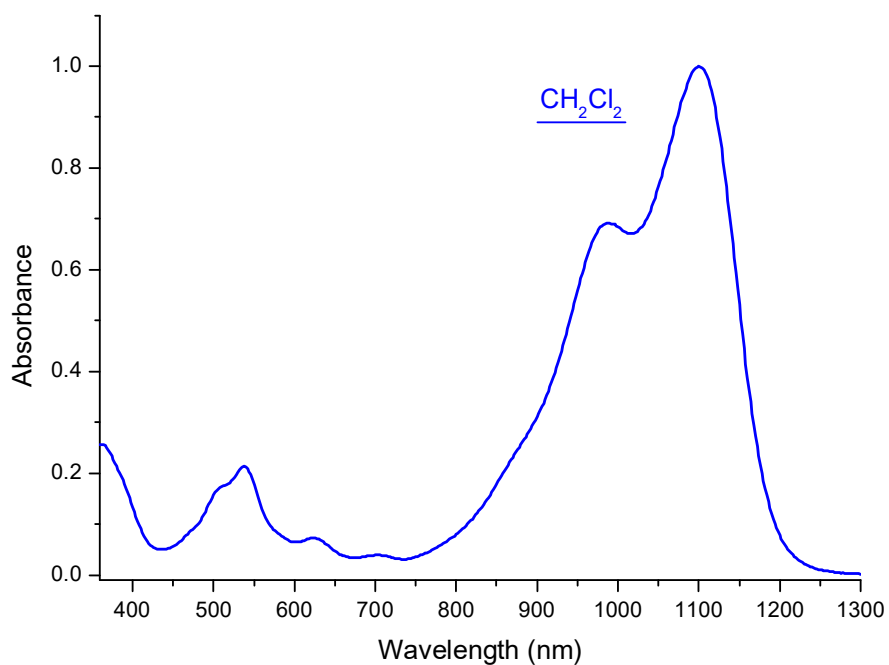
M-1 cm-1

Emission

nm

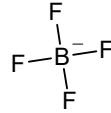
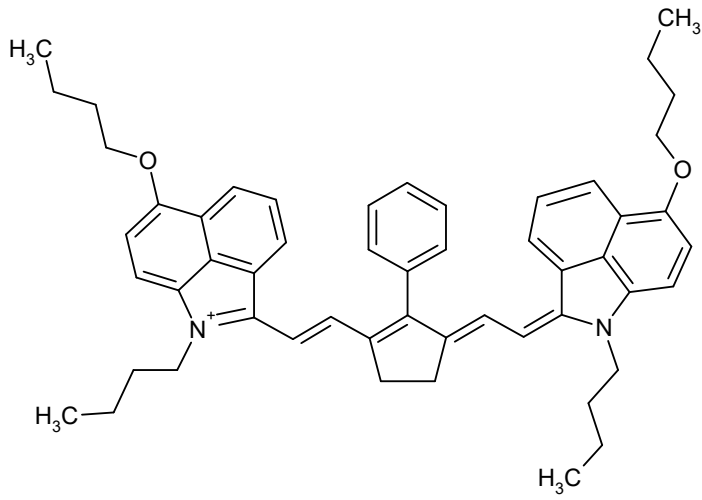
$C_{56}H_{47}BF_4O_2$

838.8024



S04290

CAS #



Absorption

Methylene chloride

1104 nm 306700 M-1 cm-1

Methanol

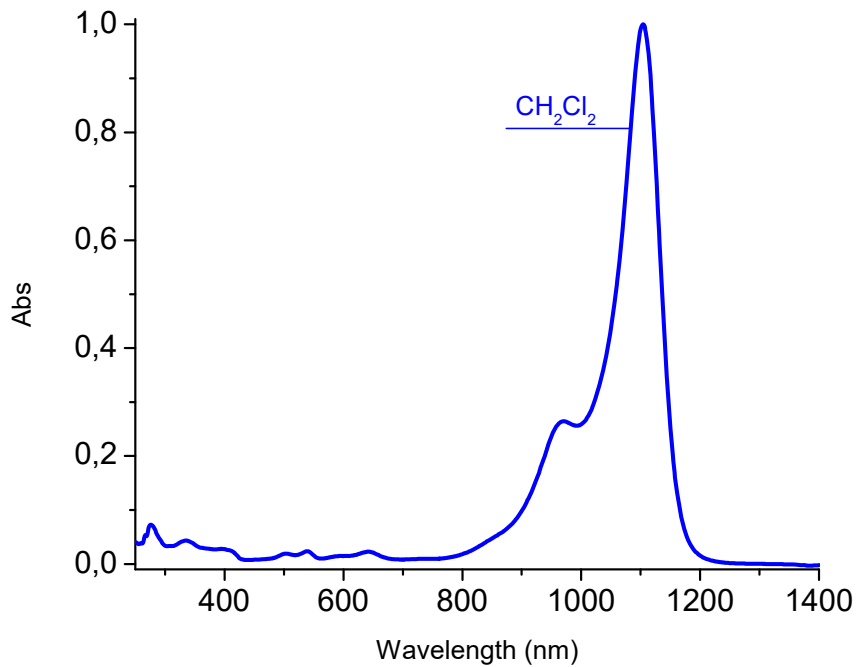
1088 nm 182000 M-1 cm-1

Emission

nm

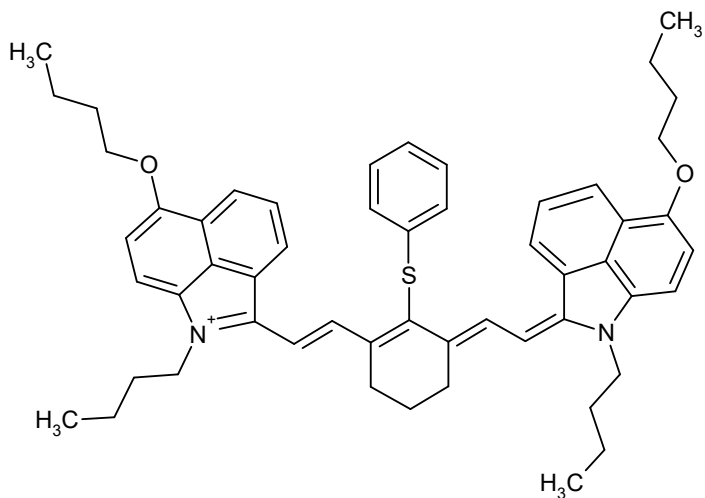
C₅₃H₅₉BF₄N₂O₂

842.8780



S04289

CAS #



Absorption

Methylene chloride

1104 nm 207000 M-1 cm-1

Acetonitrile

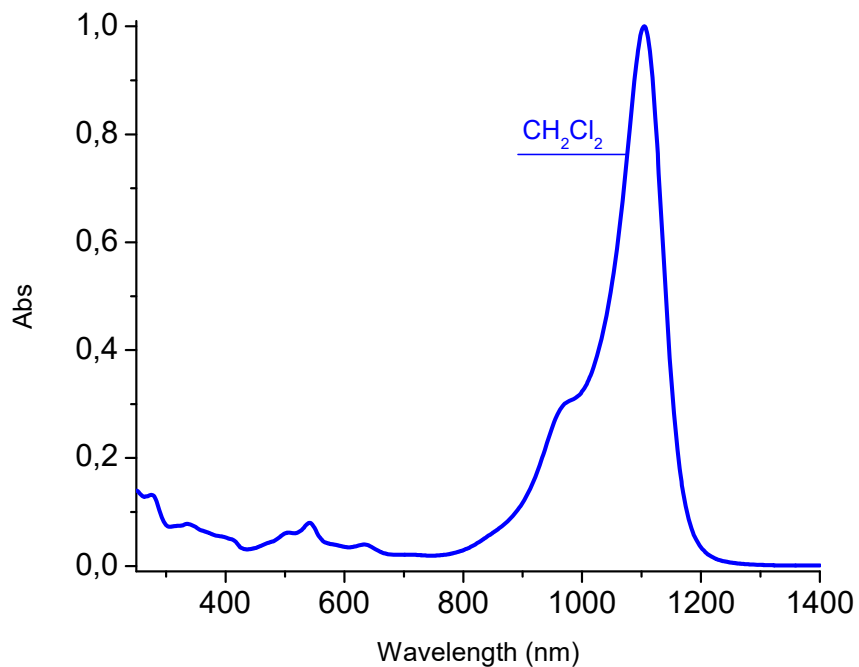
1088 nm 118000 M-1 cm-1

Emission

nm

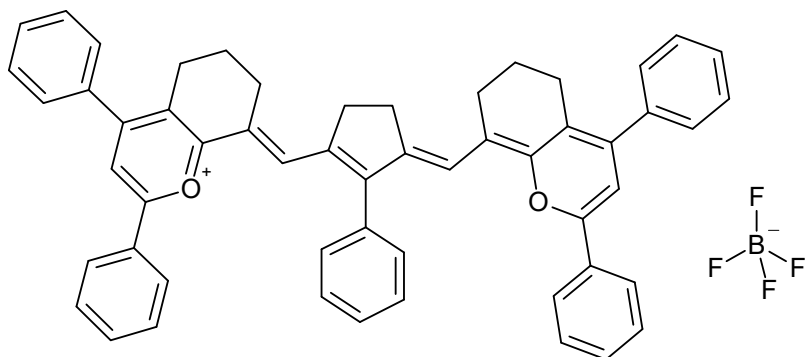
C₅₄H₆₁BF₄N₂O₂S

888.9691



S01992

CAS #
155614-02-1



Absorption

Methylene chloride

1136 nm 126000 M-1 cm-1

nm

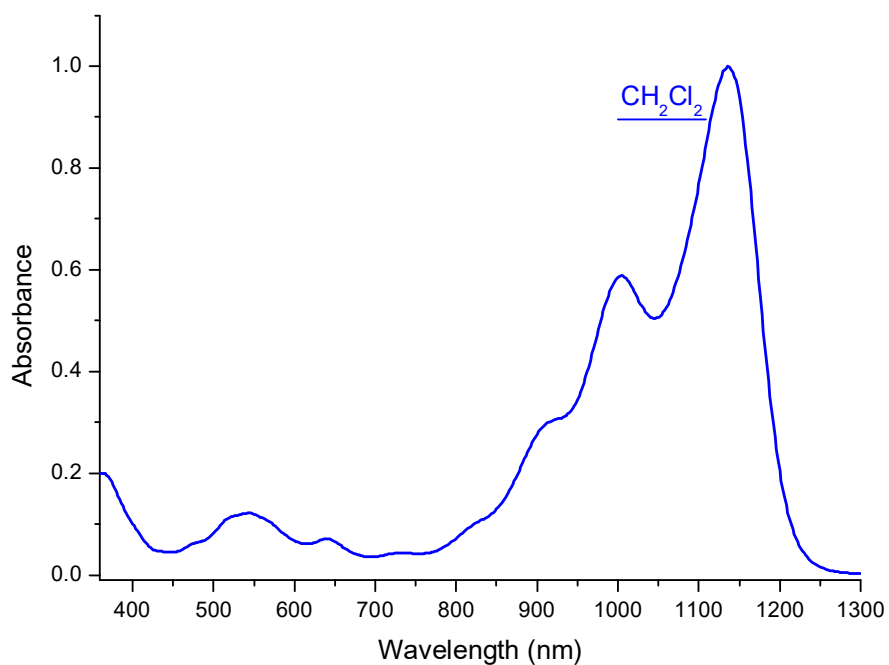
M-1 cm-1

Emission

nm

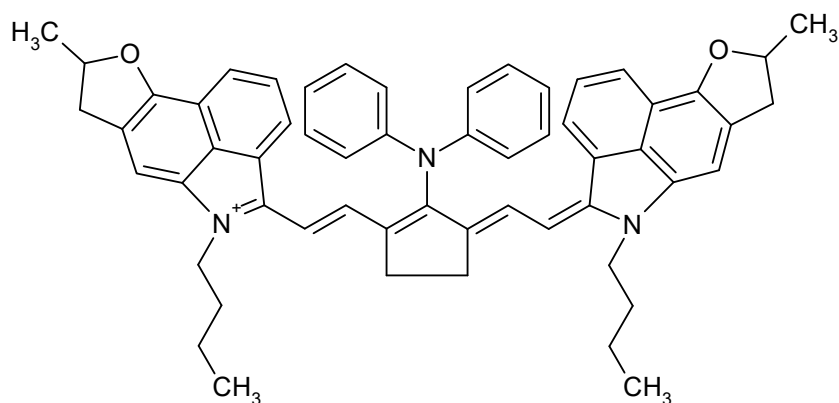
C₅₅H₄₅BF₄O₂

824.7753



S11855

CAS #



Absorption

Methylene chloride

1142

nm

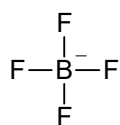
M-1 cm-1

nm

M-1 cm-1

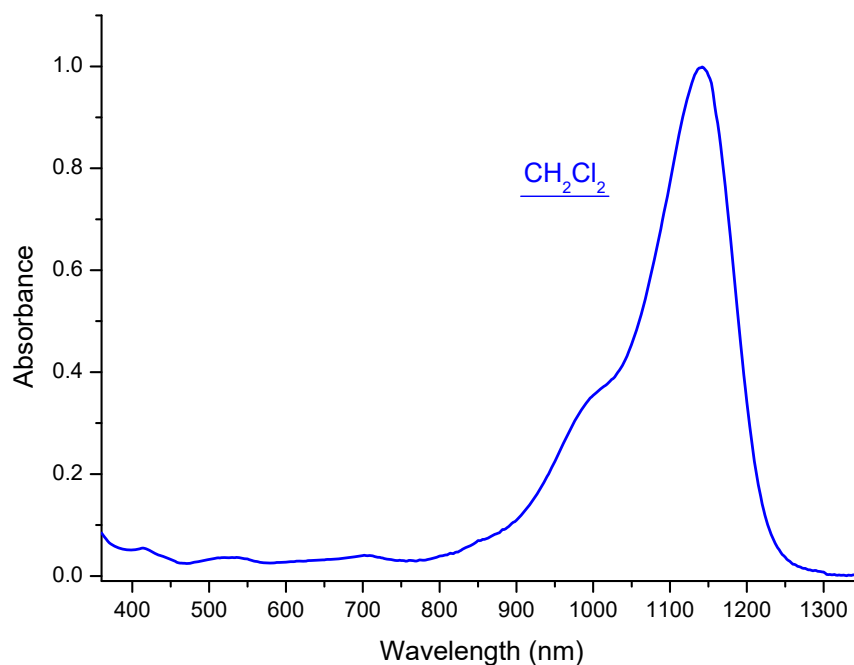
Emission

nm



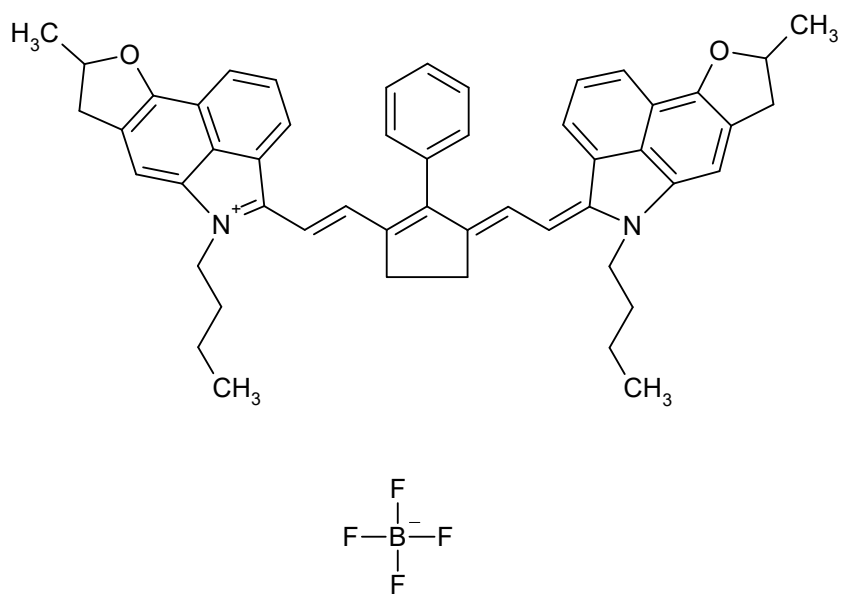
C₅₇H₅₆BF₄N₃O₂

901.9054



S12008

CAS #



Absorption

Methylene chloride

1156 nm 323000 M-1 cm-1

nm

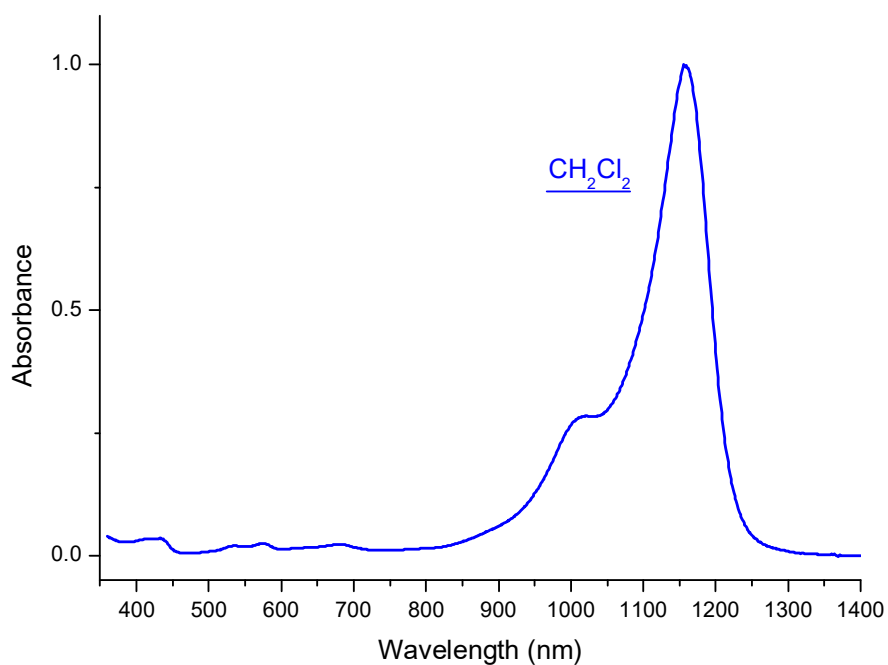
M-1 cm-1

Emission

nm

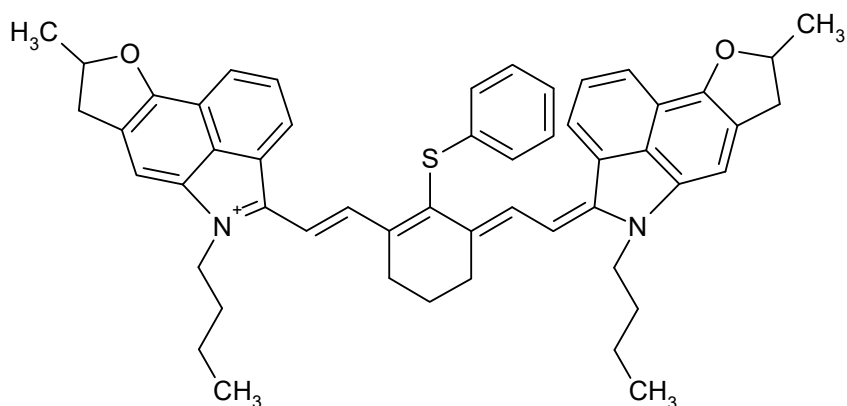
$\text{C}_{51}\text{H}_{51}\text{BF}_4\text{N}_2\text{O}_2$

810.7919



S11854

CAS #



Absorption

Methylene chloride

1162

nm

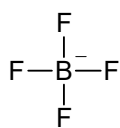
M-1 cm-1

nm

M-1 cm-1

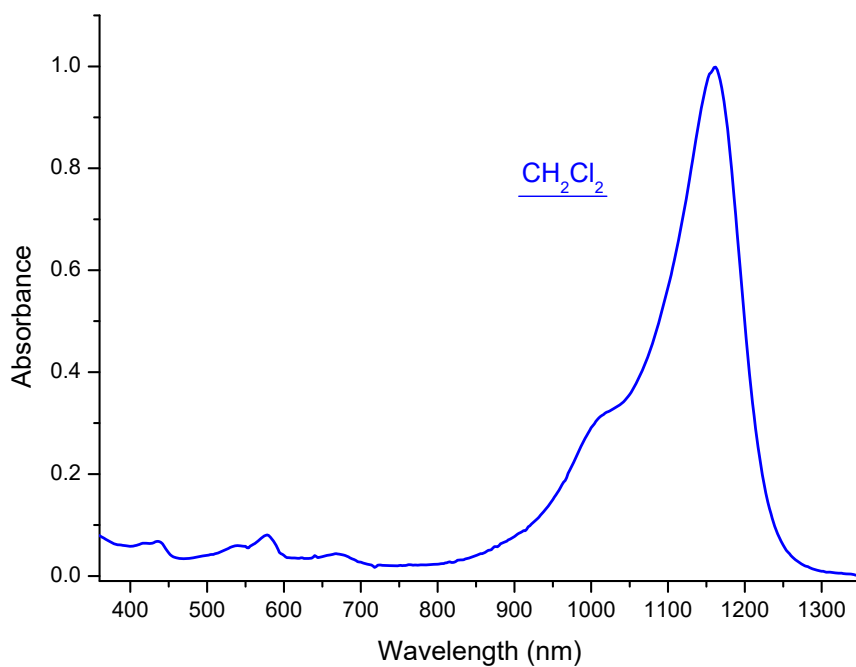
Emission

nm



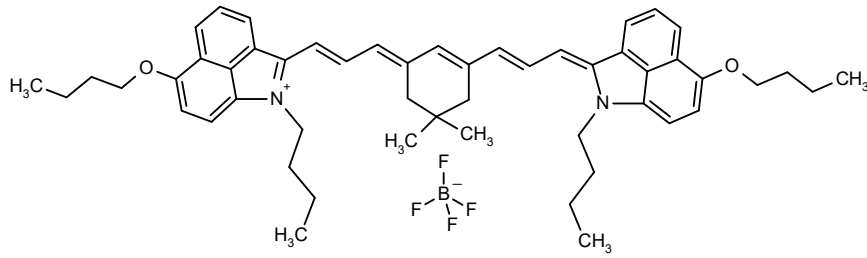
$C_{52}H_{53}BF_4N_2O_2S$

856.8830



S01983

CAS #



Absorption

Methylene chloride

1176 nm 269000 M-1 cm-1

nm

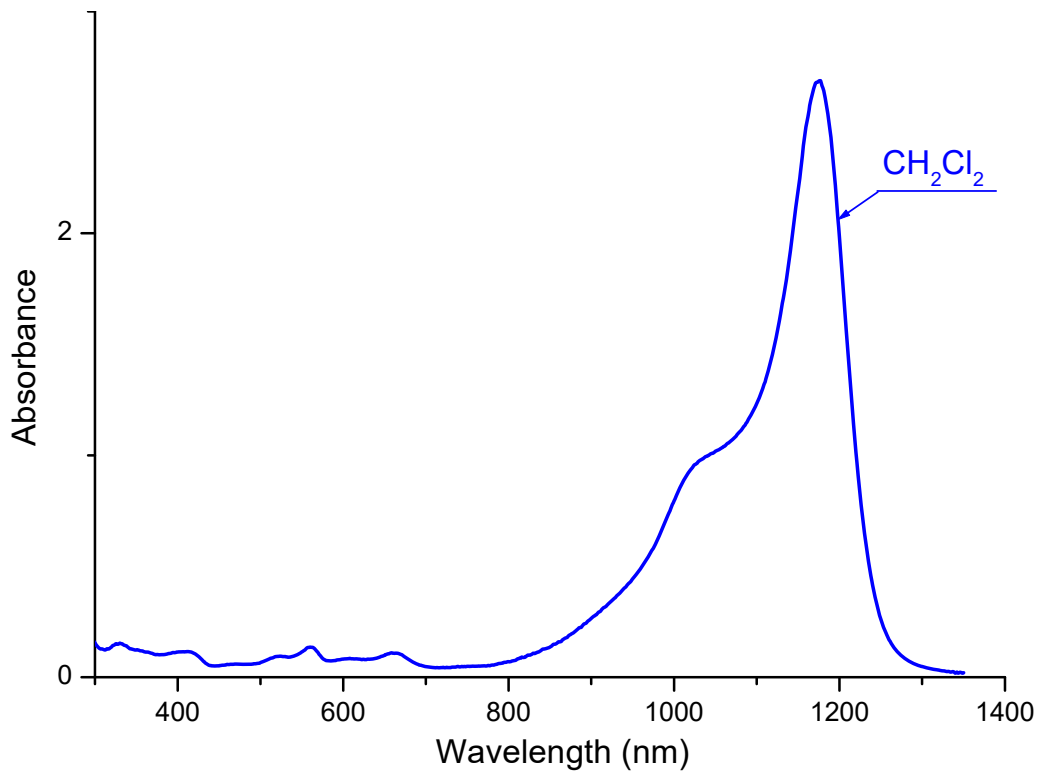
M-1 cm-1

Emission

nm

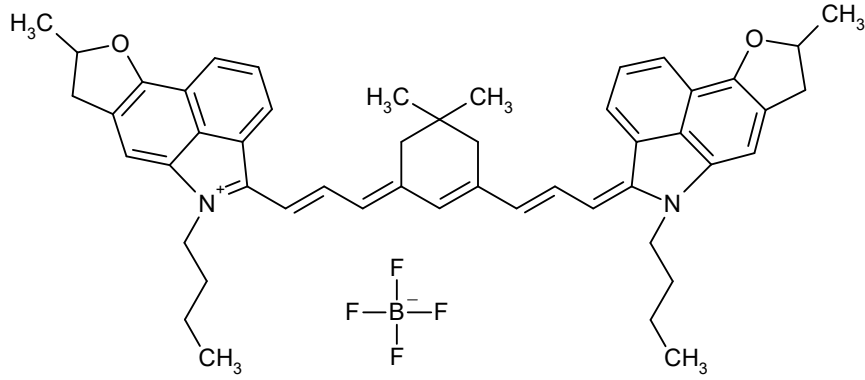
C₅₂H₆₃BF₄N₂O₂

834.8987



S03229

CAS #



Absorption

Methylene chloride

1231

nm

M-1 cm-1

nm

M-1 cm-1

Emission

nm

C₅₀H₅₅BF₄N₂O₂

802.8126

