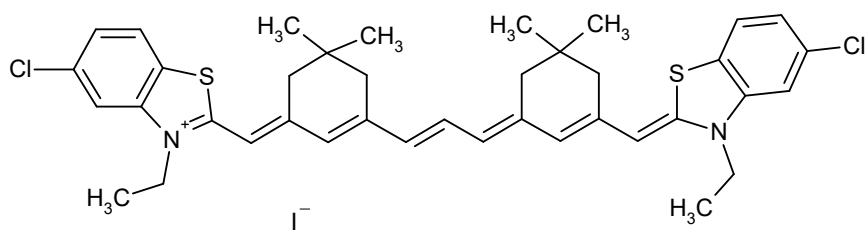


S01024

CAS #
108626-72-8



Absorption

Methylene chloride

1006 nm 160000 M-1 cm-1

Ethanol

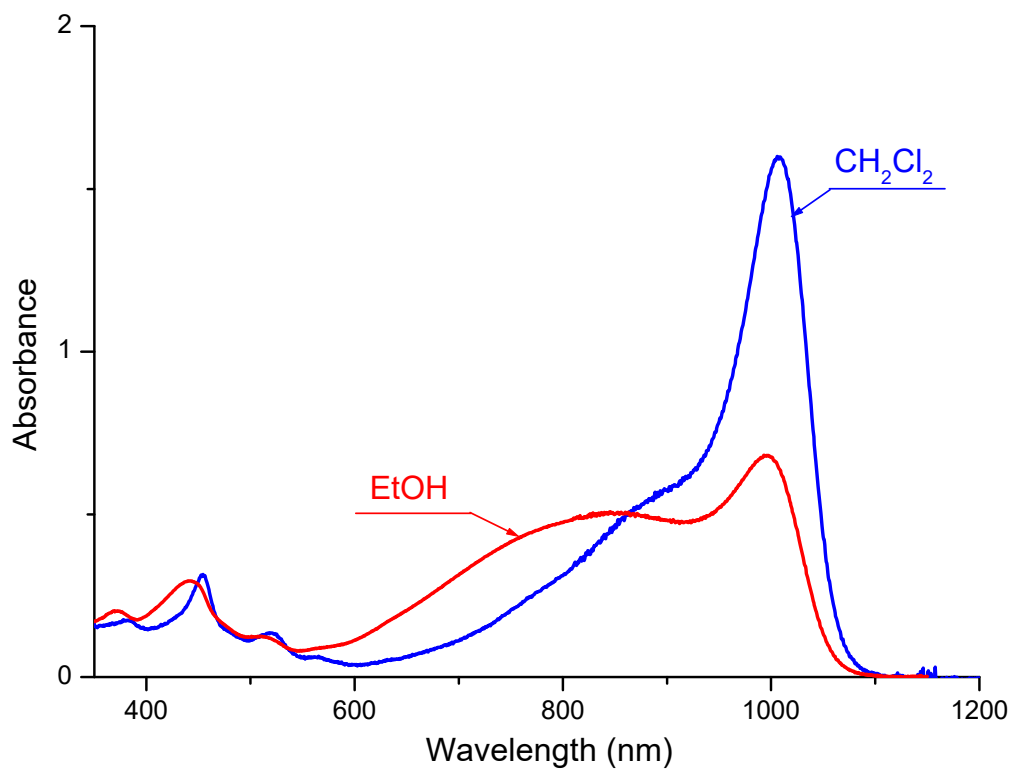
993 nm 68200 M-1 cm-1

Emission

nm

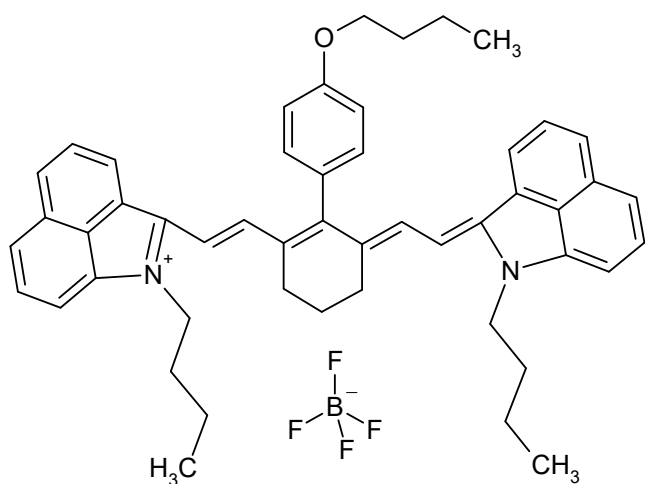
$C_{39}H_{43}Cl_2IN_2S_2$

801.7294



S01971

CAS #



Absorption

Methylene chloride

1007 nm 284300 M-1 cm-1

Methanol

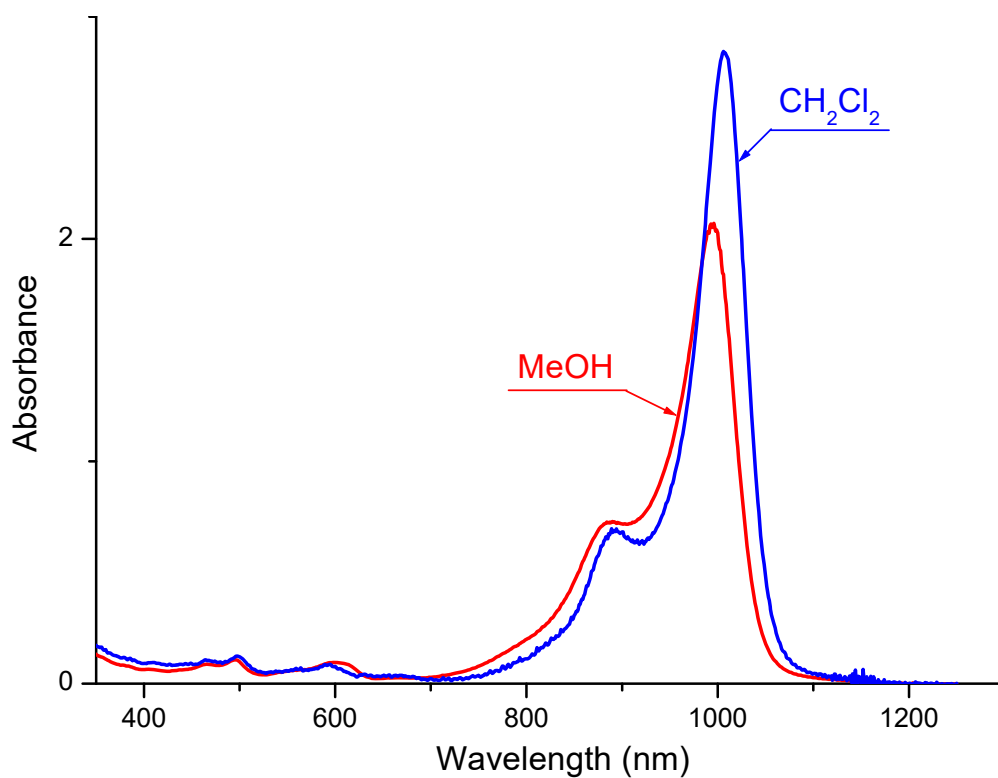
994 nm 207000 M-1 cm-1

Emission

nm

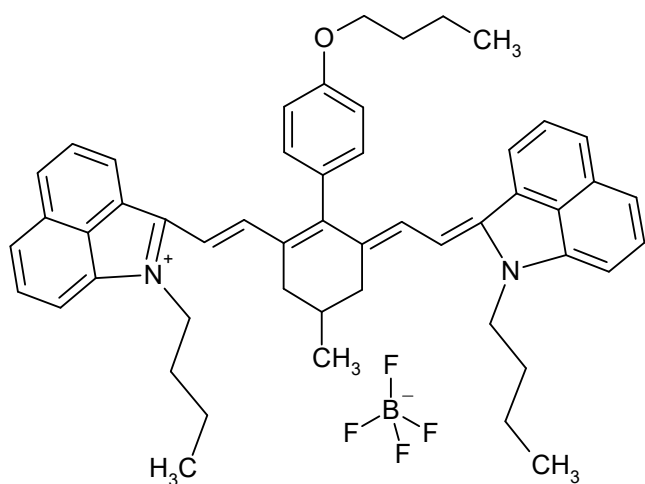
C₅₀H₅₃BF₄N₂O

784.7973



S01644

CAS #



Absorption

Methylene chloride

1007 nm 236800 M-1 cm-1

Methanol

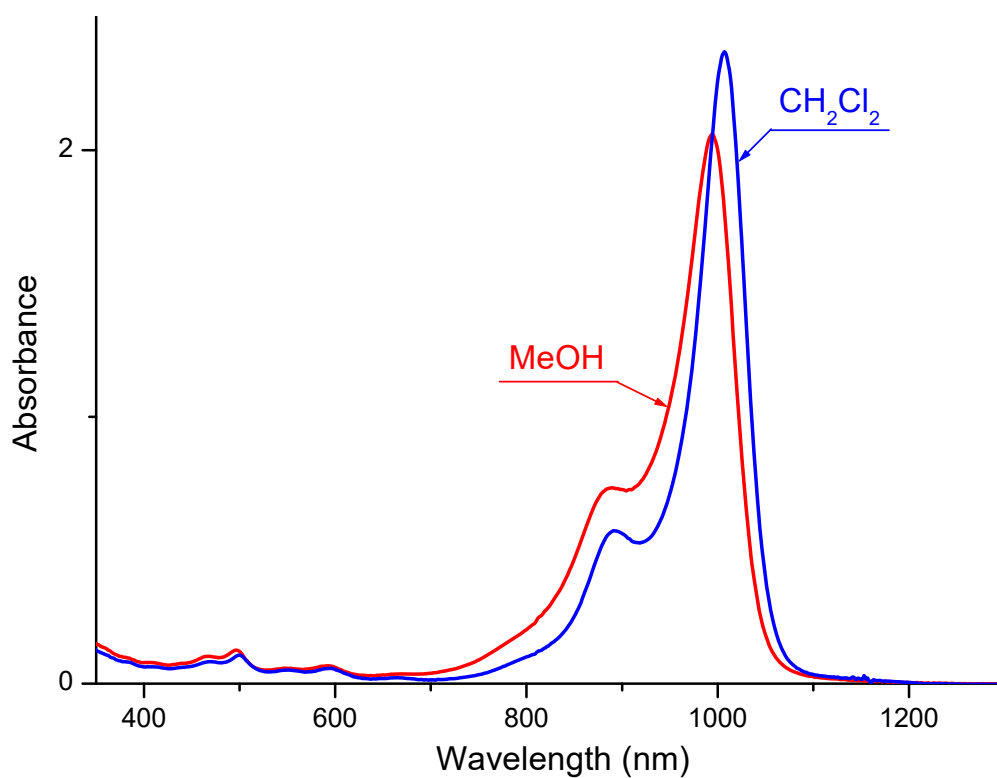
994 nm 206000 M-1 cm-1

Emission

nm

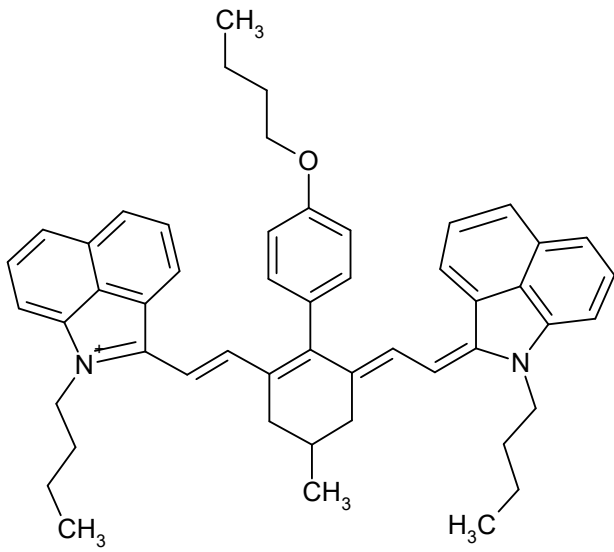
C₅₁H₅₅BF₄N₂O

798.8244



S04046

CAS #



Absorption

Methylene chloride

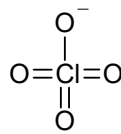
1007 nm 230000 M-1 cm-1

nm

M-1 cm-1

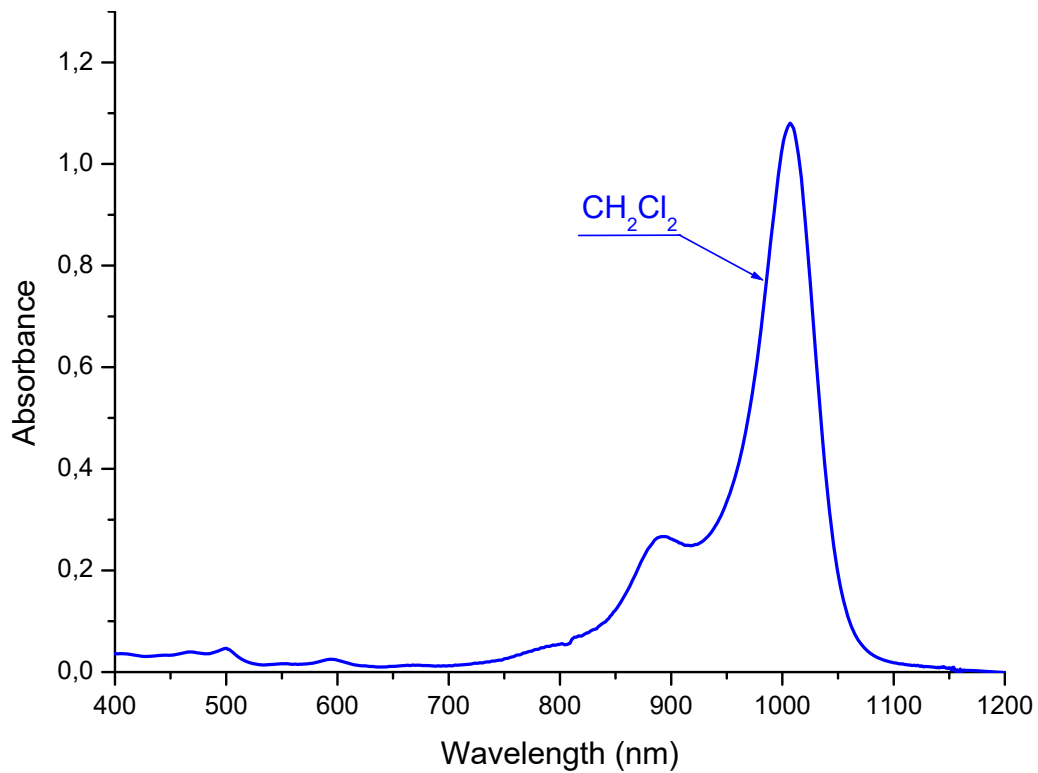
Emission

nm



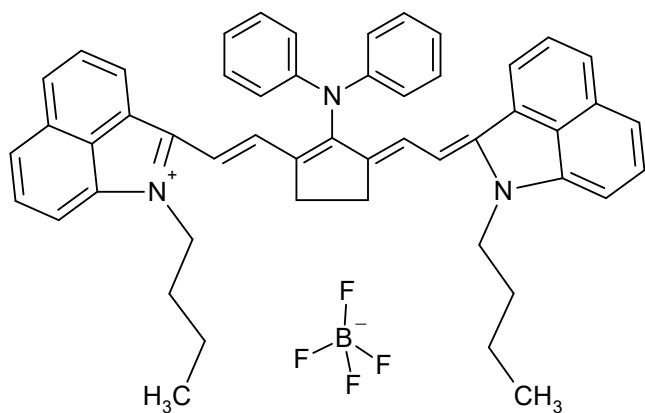
C₅₁H₅₅ClN₂O₅

811.4704



S01451

CAS #



Absorption

Methylene chloride

1015 nm 202300 M-1 cm-1

Methanol

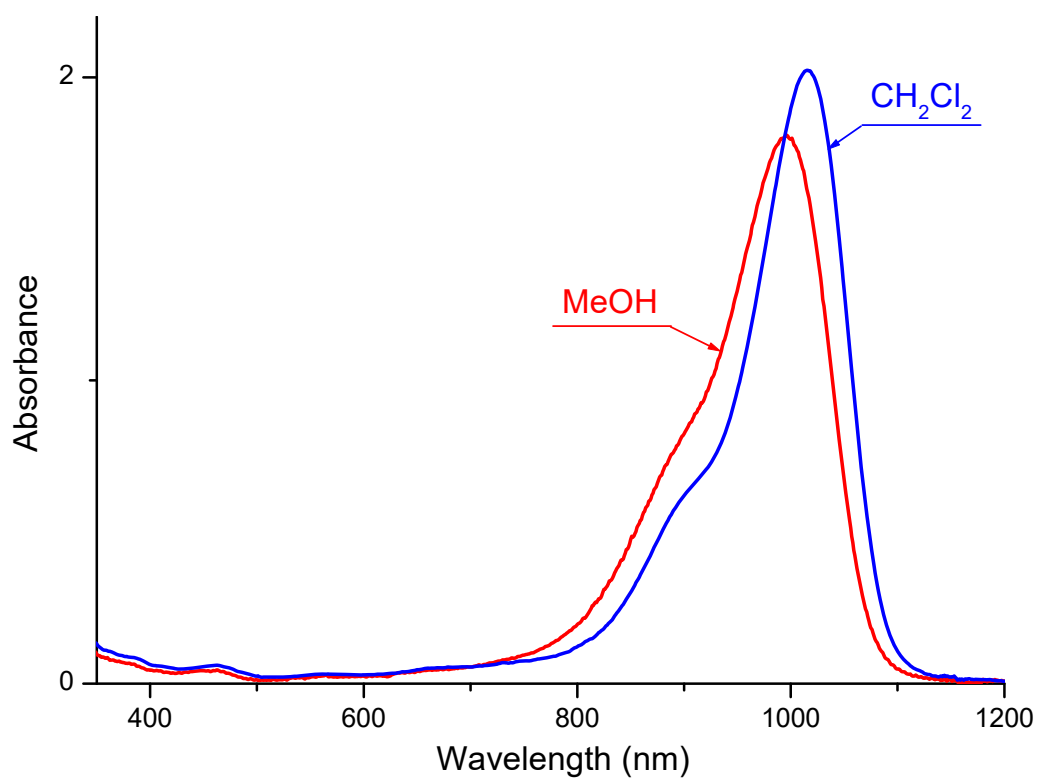
996 nm 181000 M-1 cm-1

Emission

nm

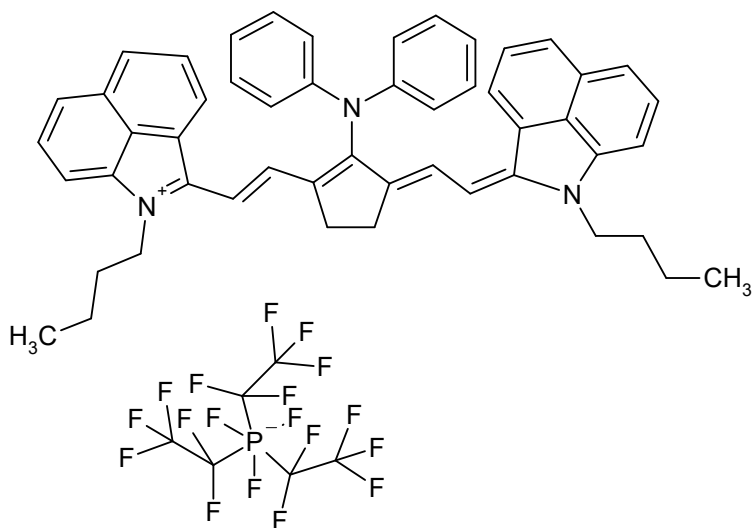
$C_{51}H_{48}BF_4N_3$

789.7759



S08734

CAS #



Absorption

Methylene chloride

1015

nm

M-1 cm-1

nm

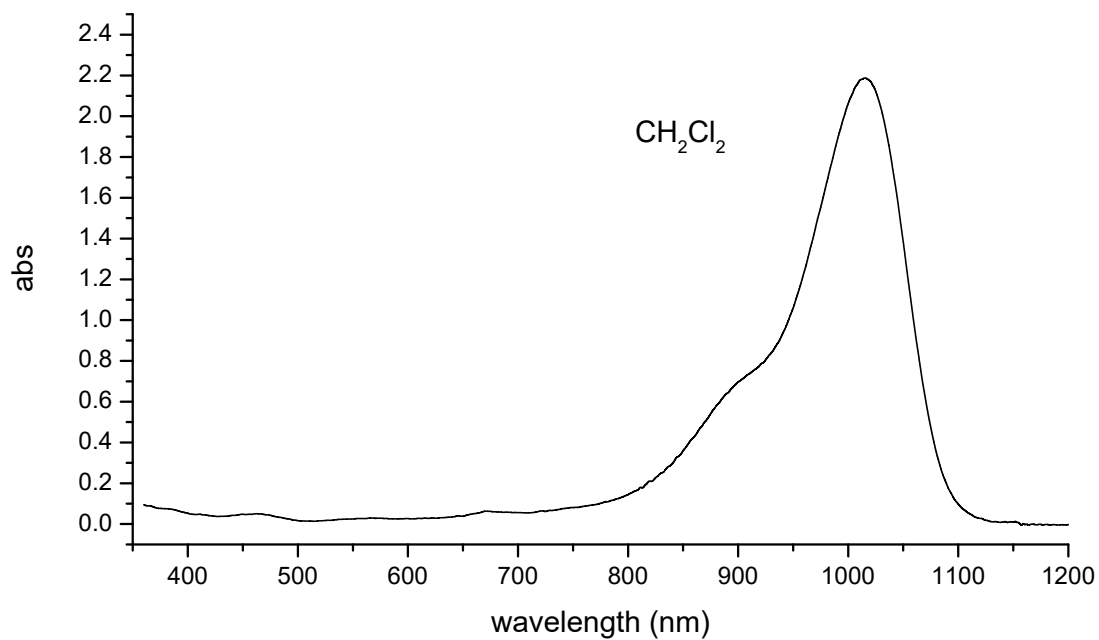
M-1 cm-1

Emission

nm

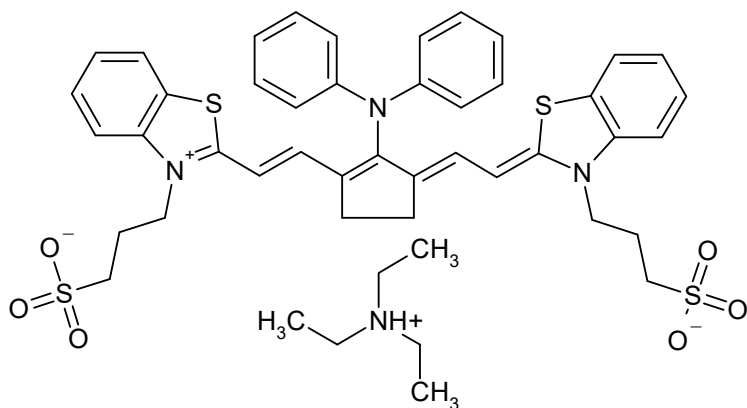
$C_{57}H_{48}F_{18}N_3P$

1147.9832



S01987

CAS #



Absorption

	Water
1026	nm 1418000 M-1 cm-1

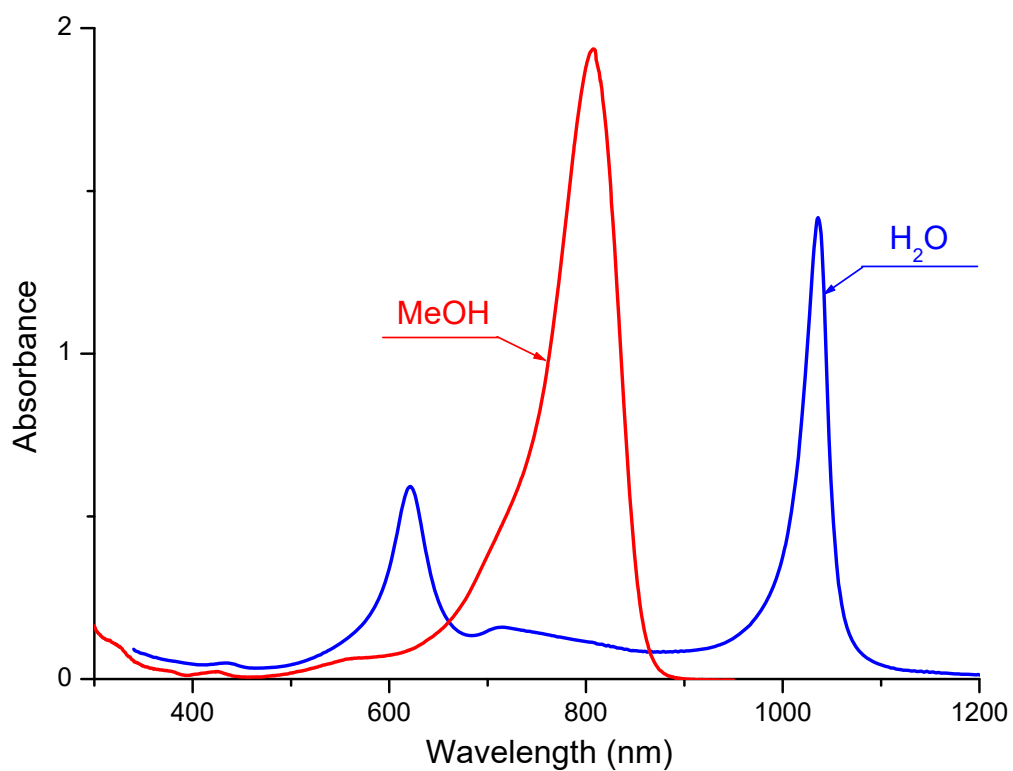
	Methanol
808	nm 193600 M-1 cm-1

Emission

nm

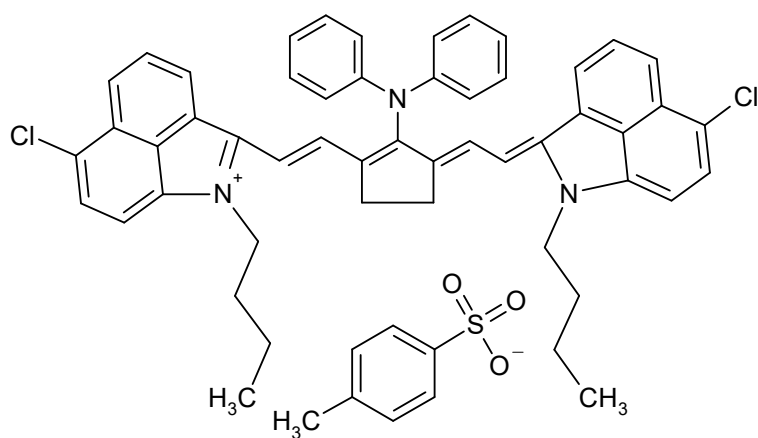
C₄₈H₅₄N₃O₆S₄

897.2381



S01970

CAS #



Absorption

Methylene chloride

1029 nm 204800 M-1 cm-1

Methanol

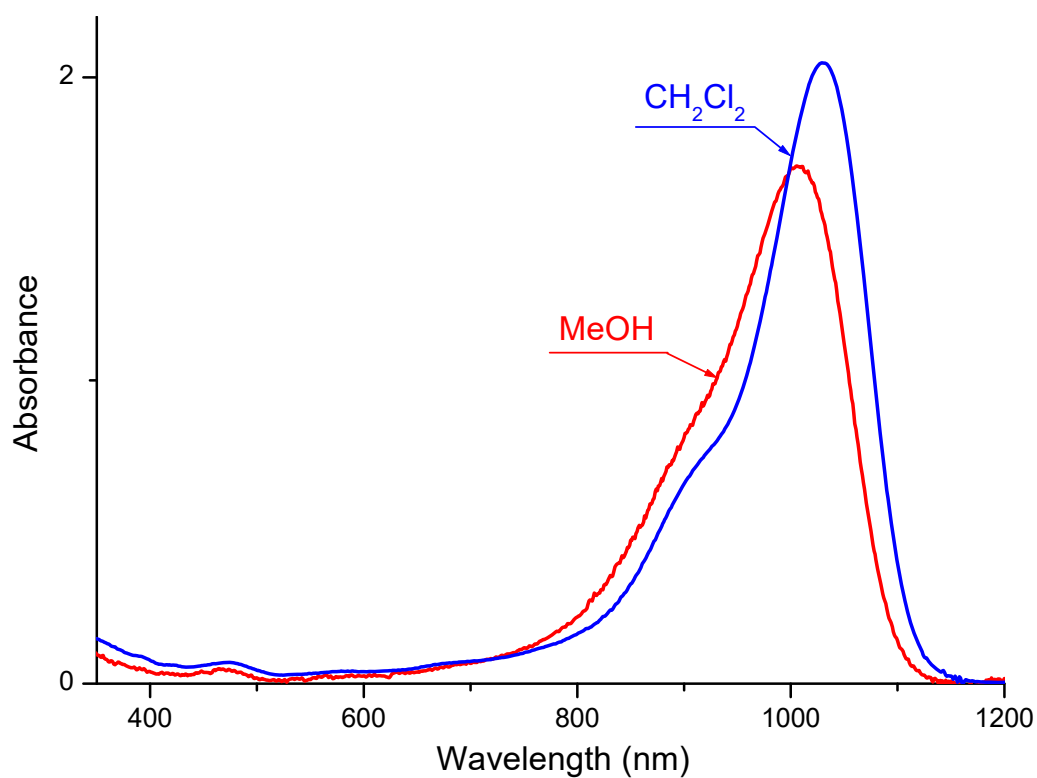
1010 nm 171000 M-1 cm-1

Emission

nm

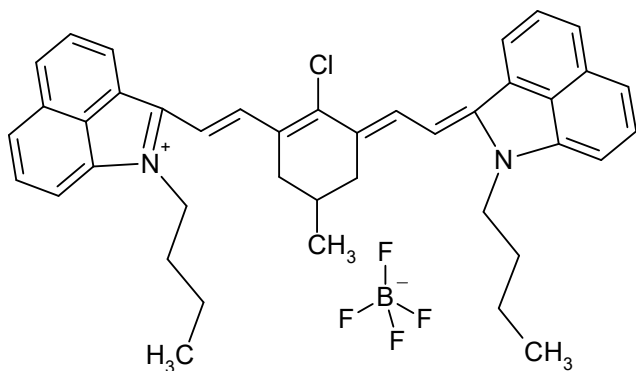
C₅₈H₅₃Cl₂N₃O₃S

943.0574



S01454

CAS #



Absorption

Methylene chloride

1029 nm 346700 M-1 cm-1

Methanol

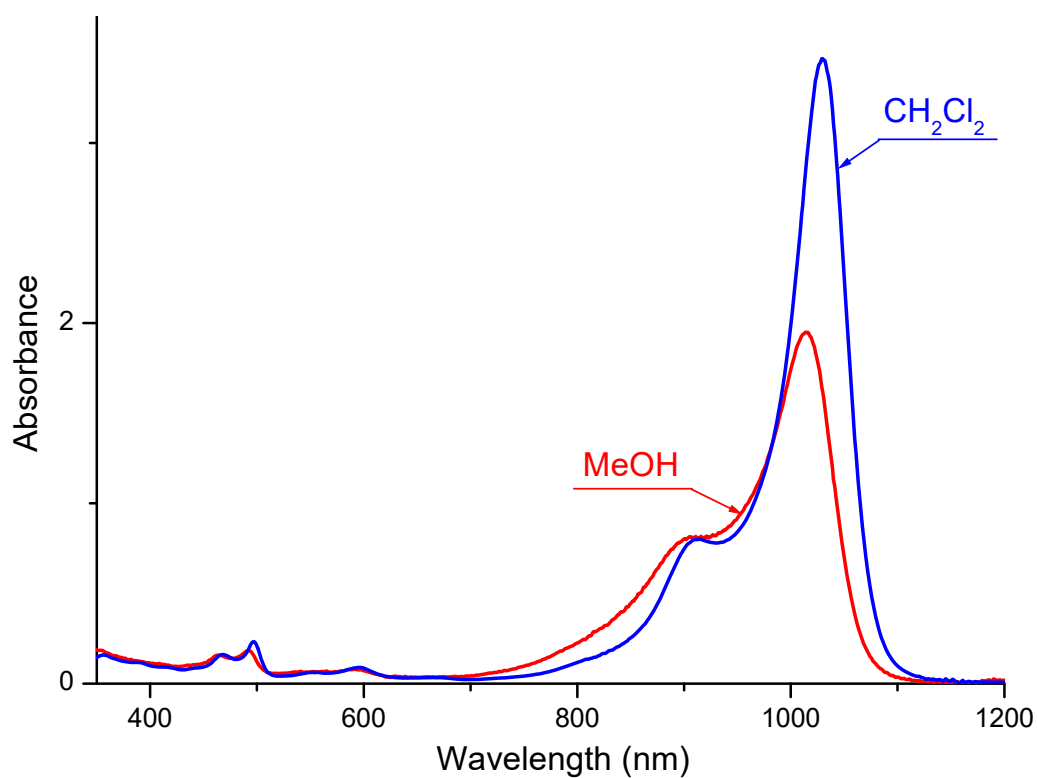
1012 nm 195000 M-1 cm-1

Emission

nm

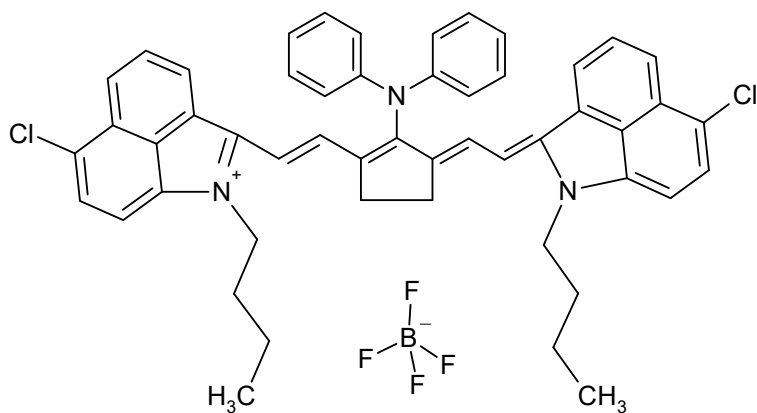
C₄₁H₄₂BClF₄N₂

685.0629



S01449

CAS #



Absorption

Methylene chloride

1030 nm 175300 M-1 cm-1

Methanol

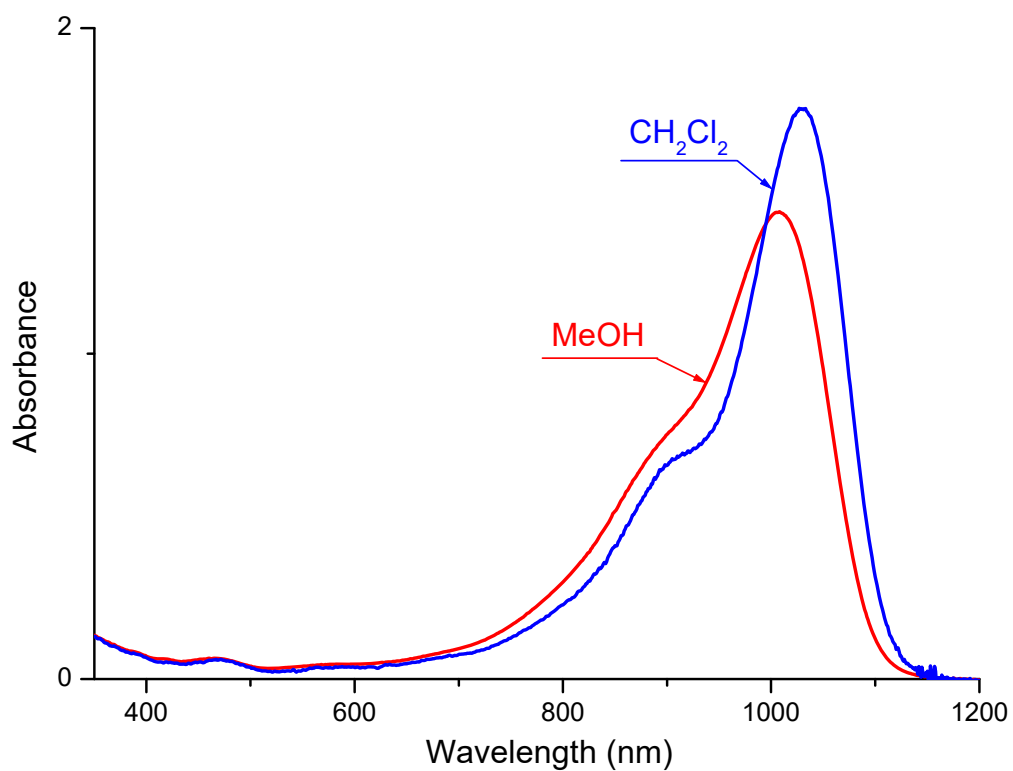
1008 nm 143600 M-1 cm-1

Emission

nm

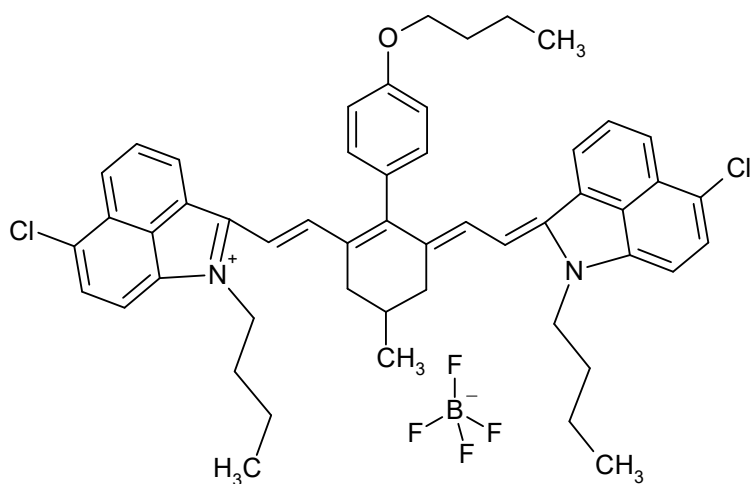
C₅₁H₄₆BCl₂F₄N₃

858.6660



S01973

CAS #



Absorption

Methylene chloride

1032 nm 301100 M-1 cm-1

Methanol

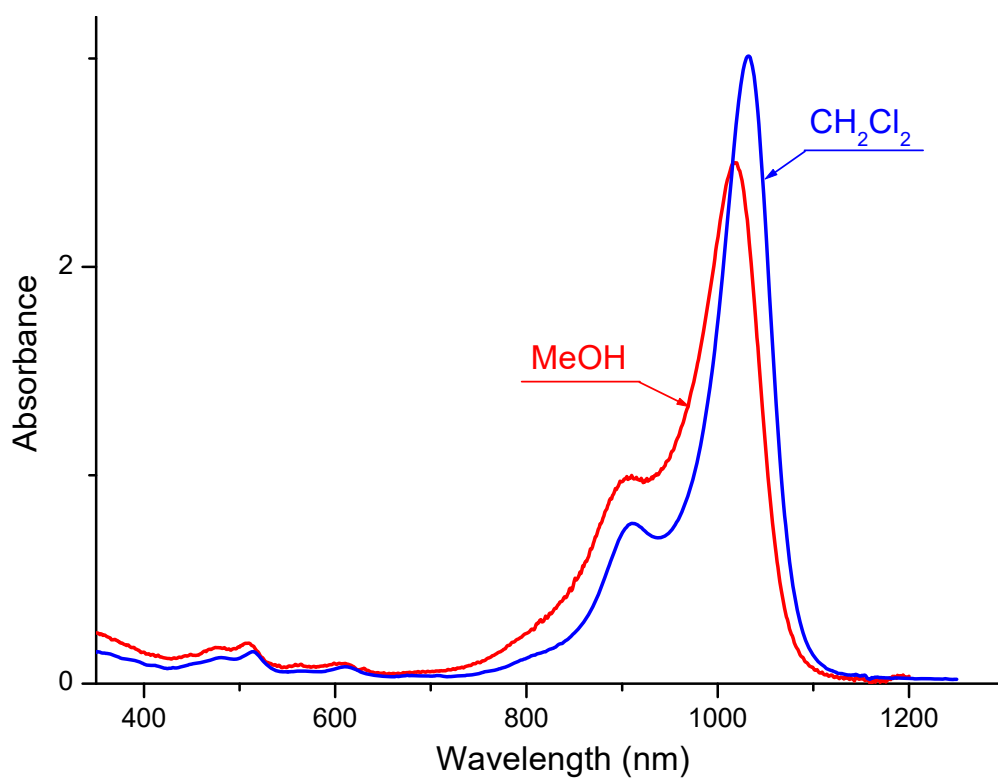
1016 nm 250000 M-1 cm-1

Emission

nm

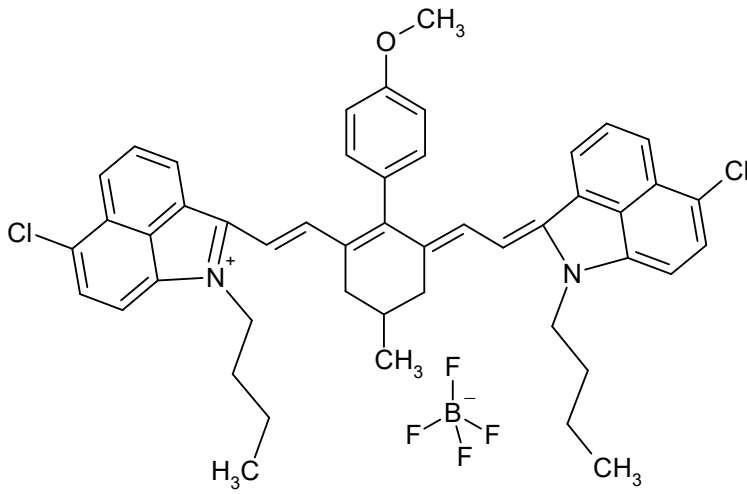
$C_{51}H_{53}BCl_2F_4N_2O$

867.7145



S01444

CAS #



Absorption

Methylene chloride

1033 nm 294100 M-1 cm-1

Methanol

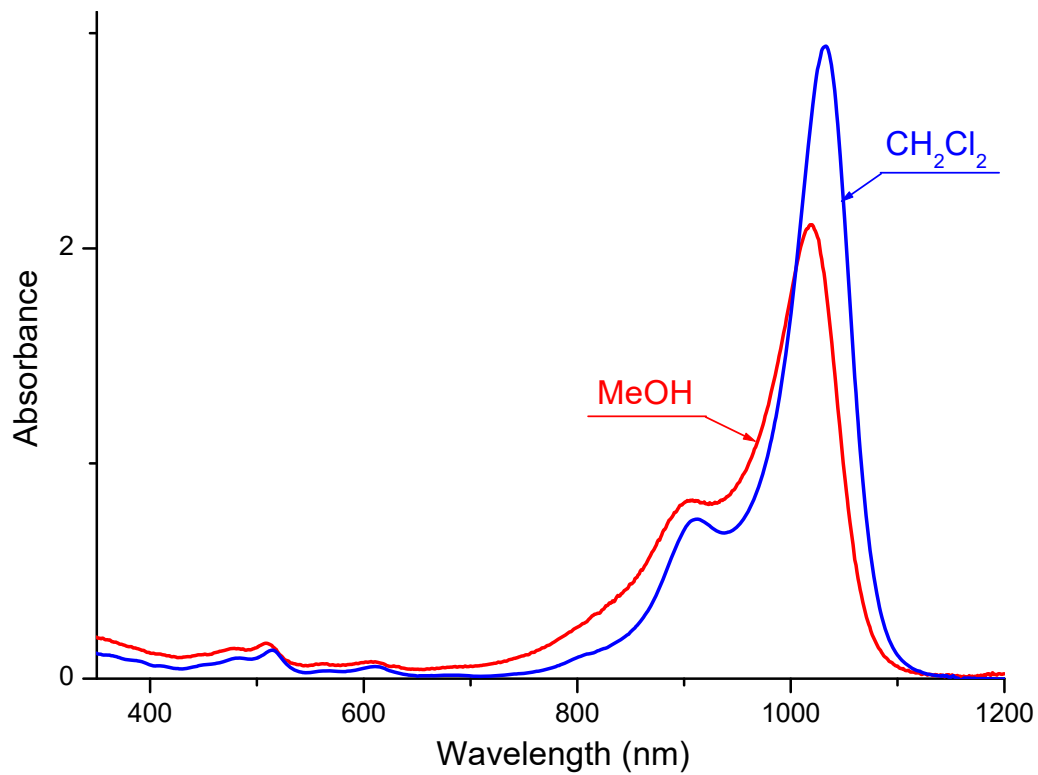
1018 nm 211000 M-1 cm-1

Emission

nm

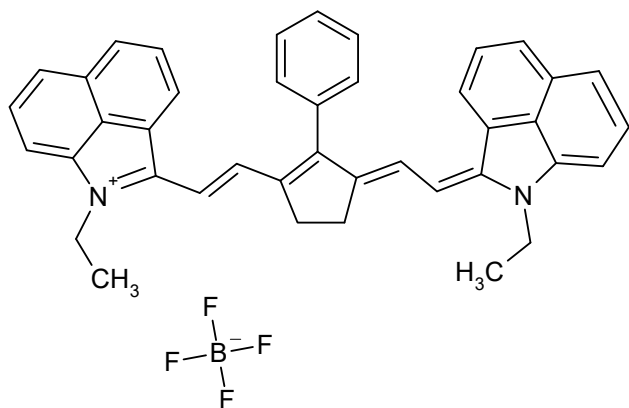
C₄₈H₄₇BCl₂F₄N₂O

825.6332



S01149

CAS #
125127-62-0



Absorption

Methylene chloride

1035 nm 335000 M-1 cm-1

nm

M-1 cm-1

Emission

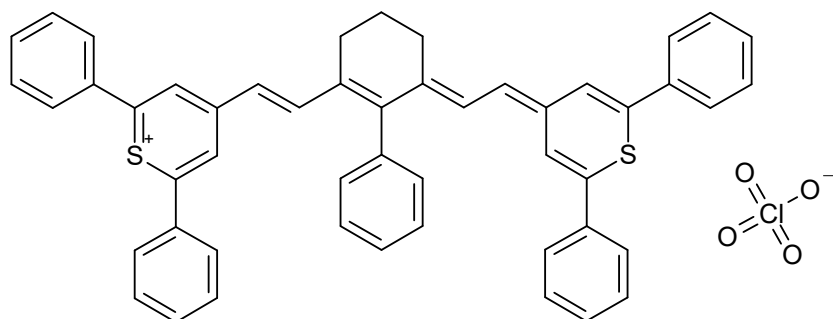
nm

C₄₁H₃₅BF₄N₂

642.5541

S01989

CAS #



Absorption

Methylene chloride

1040 nm 305000 M-1 cm-1

nm

M-1 cm-1

Emission

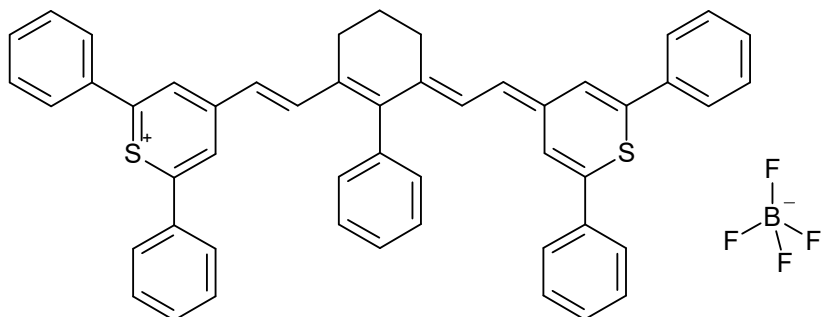
nm

C₅₀H₃₉ClO₄S₂

803.4469

S01990

CAS #



Absorption

Methylene chloride

1040 nm 305000 M-1 cm-1

nm

M-1 cm-1

Emission

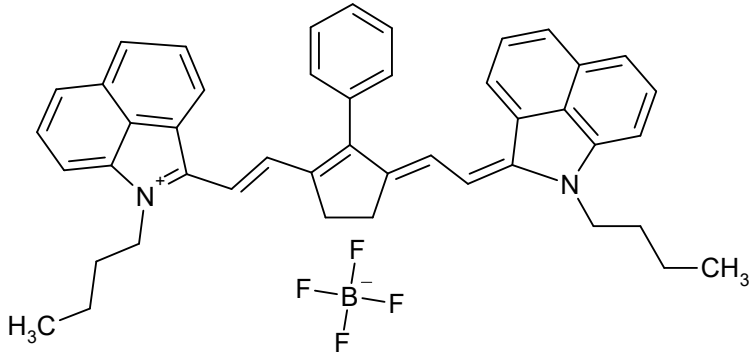
nm

C₅₀H₃₉BF₄S₂

790.8009

S01452

CAS #



Absorption

Methylene chloride

1040 nm M-1 cm-1

Acetonitrile

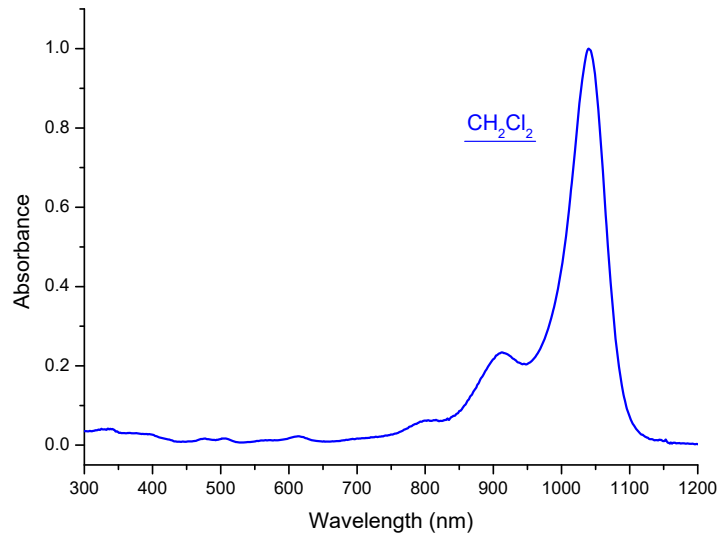
1023 nm 242000 M-1 cm-1

Emission

nm

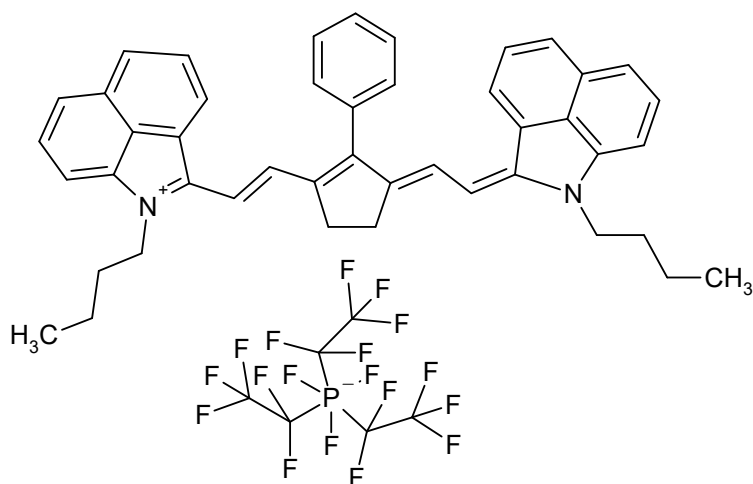
C₄₅H₄₃BF₄N₂

698.6625



S11766

CAS #



Absorption

Methylene chloride

1040 nm 305000 M-1 cm-1

nm

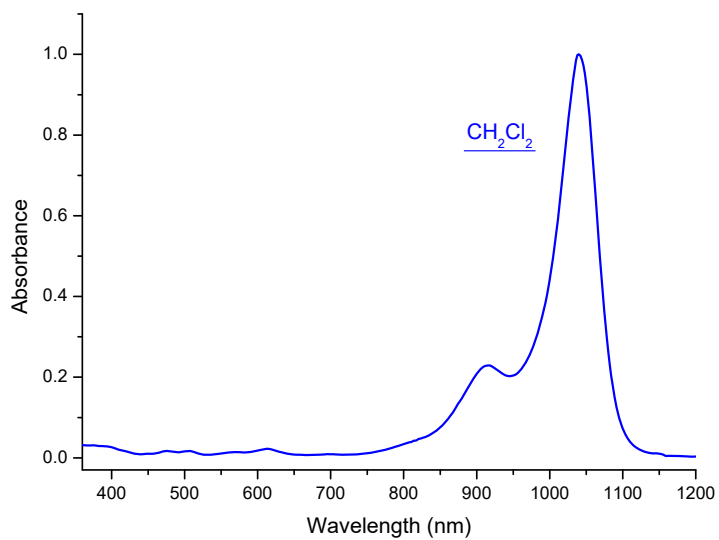
M-1 cm-1

Emission

nm

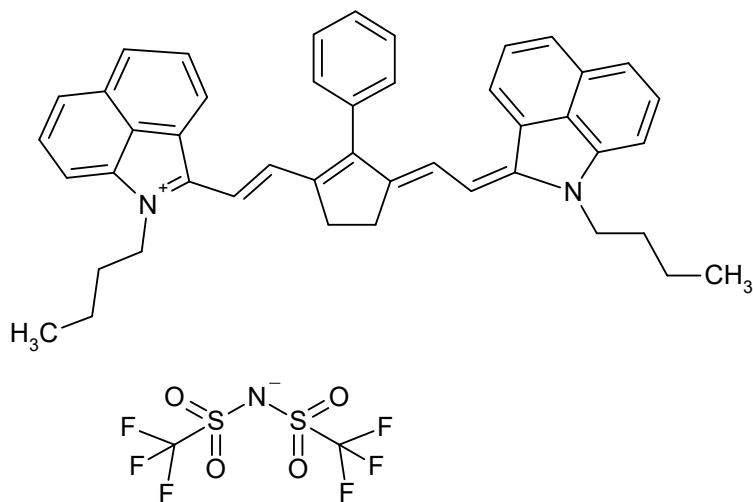
C₅₁H₄₃F₁₈N₂P

1056.8698



S11767

CAS #



Absorption

Methylene chloride

1040 nm 305000 M-1 cm-1

nm

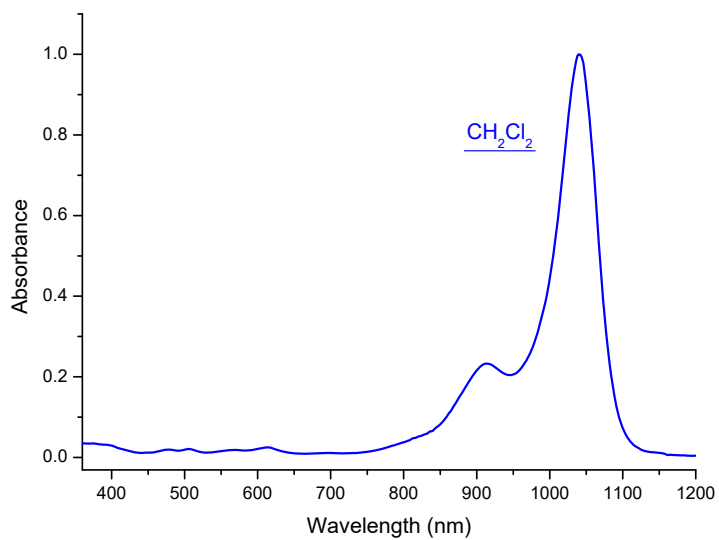
M-1 cm-1

Emission

nm

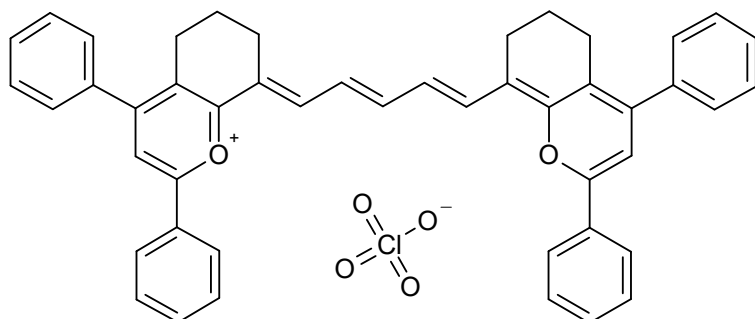
C₄₇H₄₃F₆N₃O₄S₂

892.0029



S01994

CAS #



Absorption

Methylene chloride

1050 nm 161000 M-1 cm-1

nm

M-1 cm-1

Emission

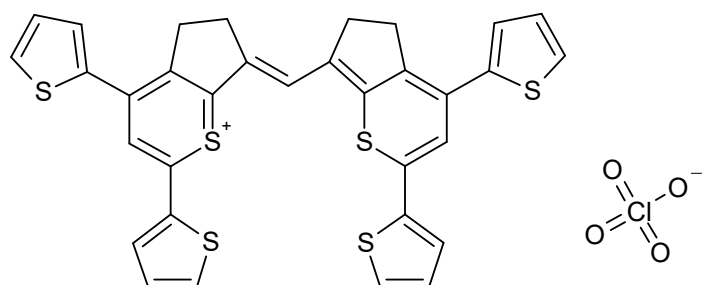
nm

C₄₇H₃₉ClO₆

735.2843

S01997

CAS #



Absorption

Methylene chloride

1050 nm M-1 cm-1

nm M-1 cm-1

Emission

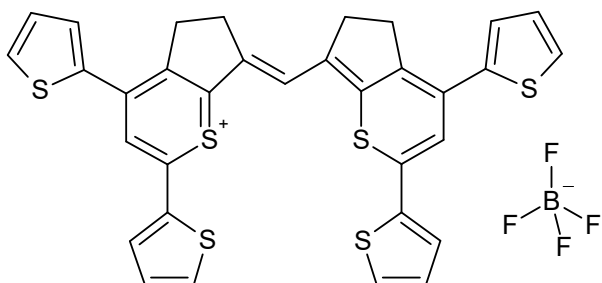
nm

$\text{C}_{33}\text{H}_{23}\text{ClO}_4\text{S}_6$

711.3859

S01998

CAS #



Absorption

Methylene chloride

1050 nm M-1 cm⁻¹

nm M-1 cm⁻¹

Emission

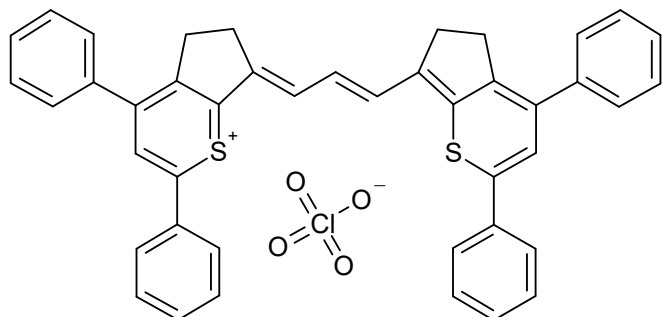
nm

C₃₃H₂₃BF₄S₆

698.7399

S01996

CAS #



Absorption

Methylene chloride

1055 nm 166000 M-1 cm-1

nm

M-1 cm-1

Emission

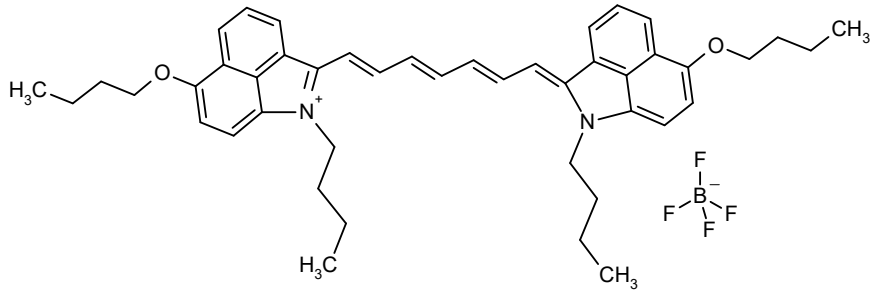
nm

C₄₃H₃₃ClO₄S₂

713.3211

S01968

CAS #



Absorption

Methylene chloride

1057 nm 285900 M-1 cm-1

Methanol

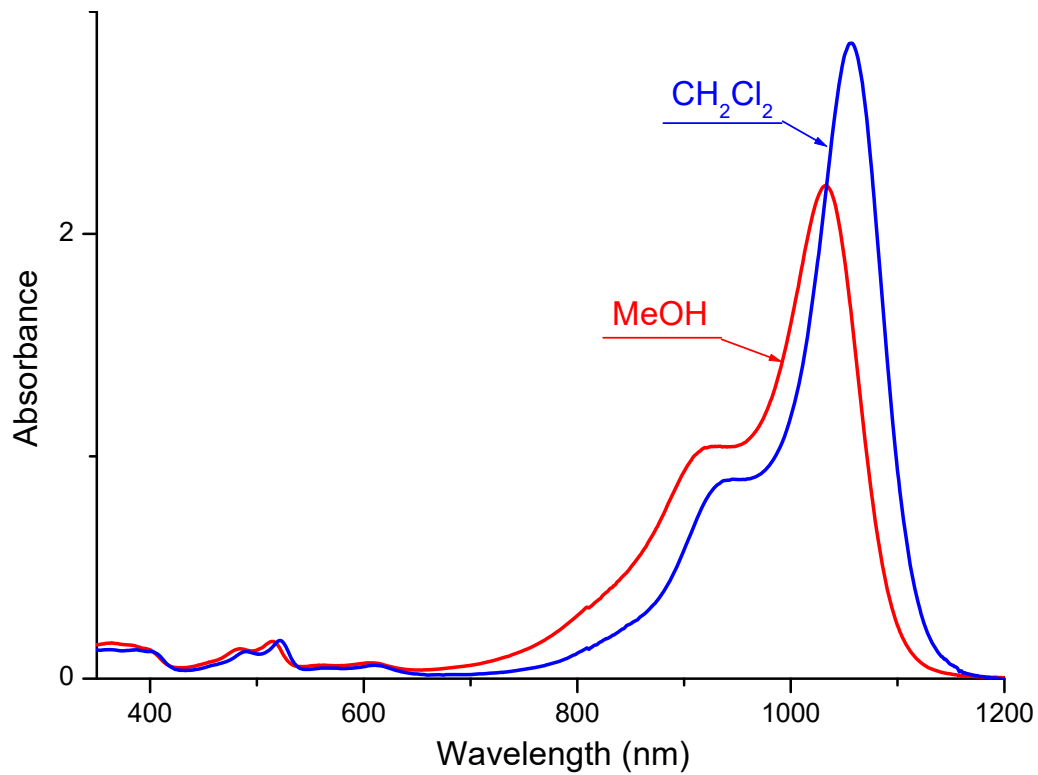
1033 nm 221800 M-1 cm-1

Emission

nm

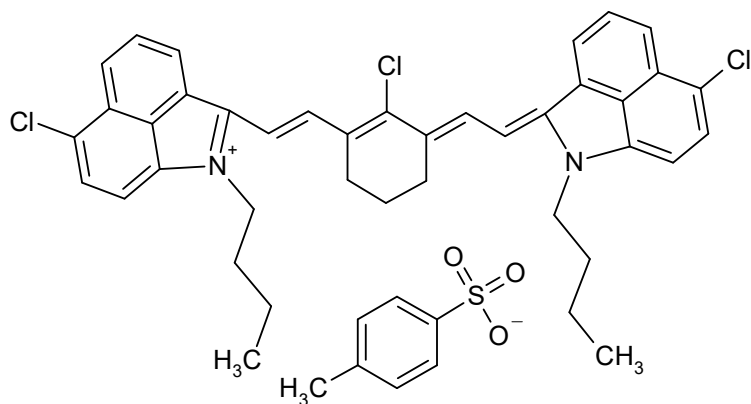
C₄₅H₅₃BF₄N₂O₂

740.7410



S01974

CAS #



Absorption

Methylene chloride

1059 nm 287200 M-1 cm-1

Methanol

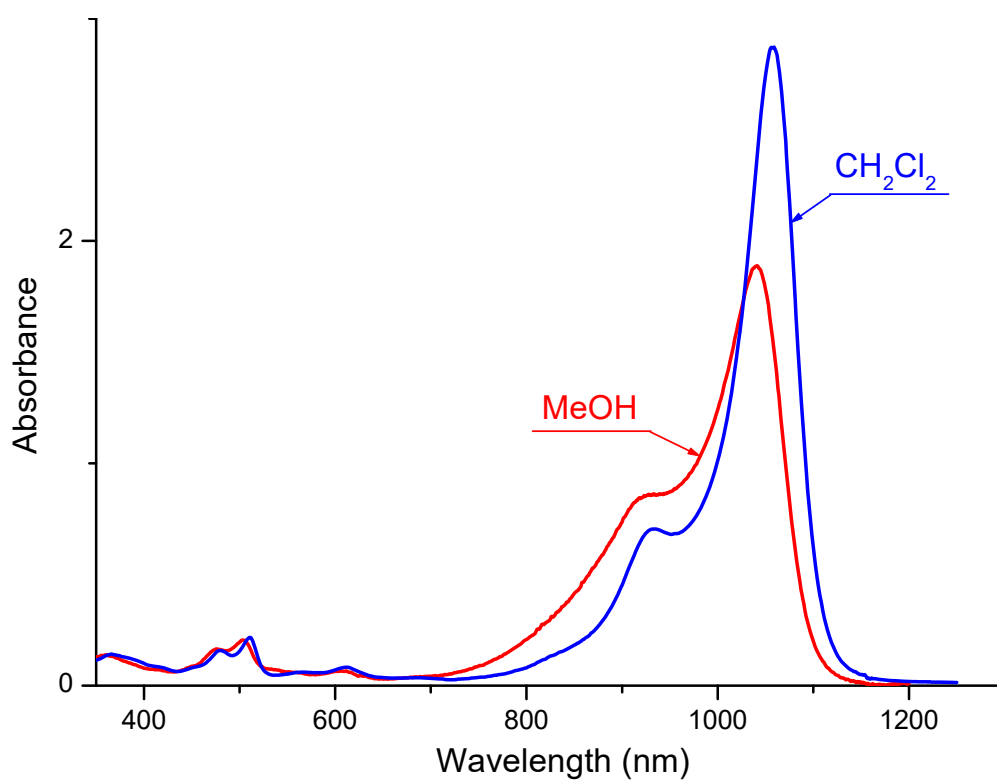
1042 nm 189000 M-1 cm-1

Emission

nm

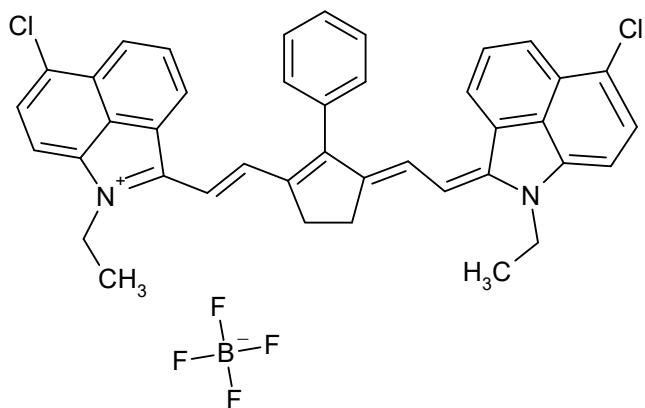
C₄₇H₄₅Cl₃N₂O₃S

824.3173



S01152

CAS #
100012-45-1



Absorption

Methylene chloride

1061 nm 335100 M-1 cm-1

nm

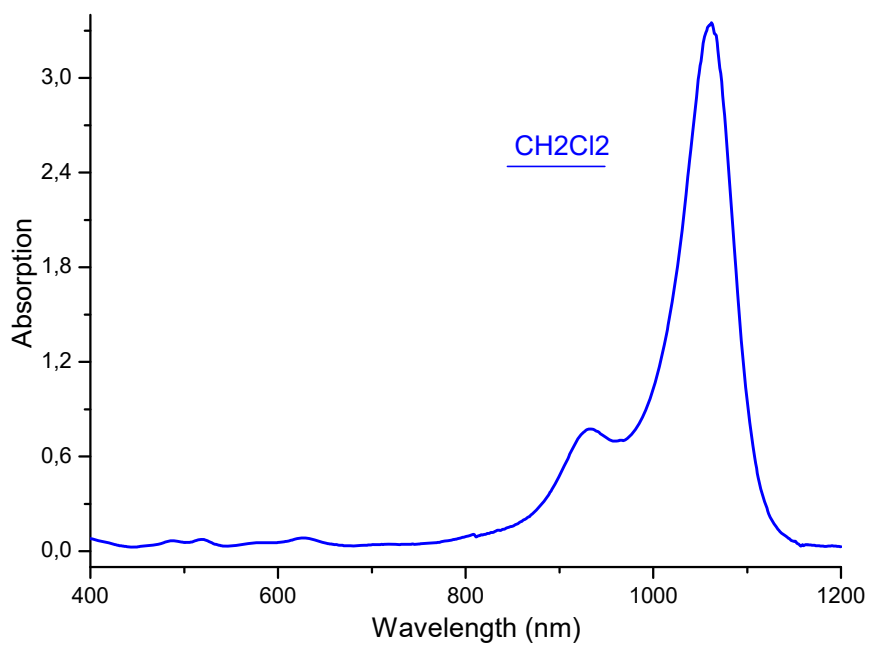
M-1 cm-1

Emission

nm

C₄₁H₃₃BCl₂F₄N₂

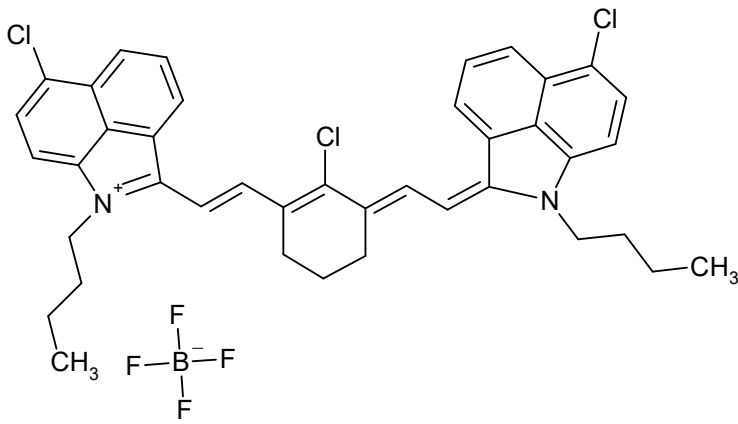
711.4442



S01448

CAS #
155613-98-2

IR-1048



Absorption

Methylene chloride

1062 nm 260000 M-1 cm-1

nm

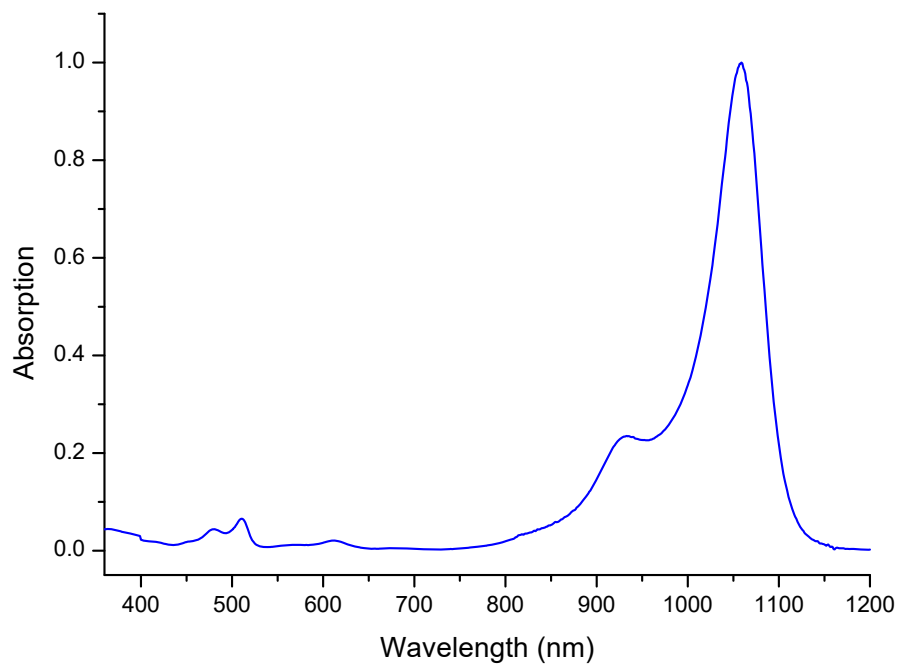
M-1 cm-1

Emission

nm

C₄₀H₃₈BCl₃F₄N₂

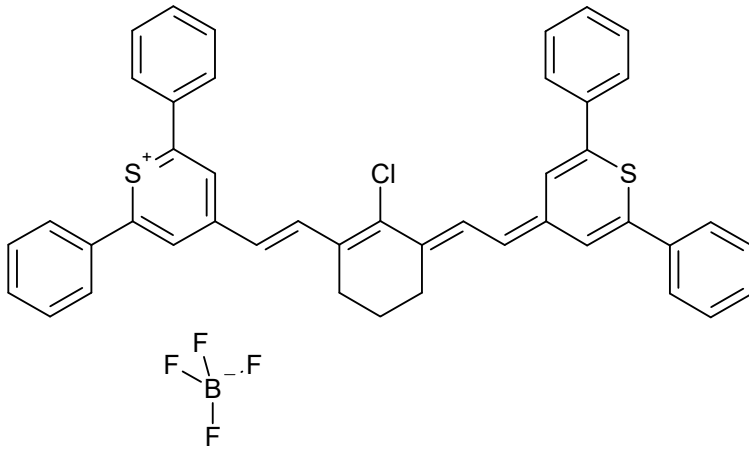
739.9259



S02847

CAS #
155614-01-0

IR-1061



Absorption

Methylene chloride

1062 nm 301500 M-1 cm-1

nm

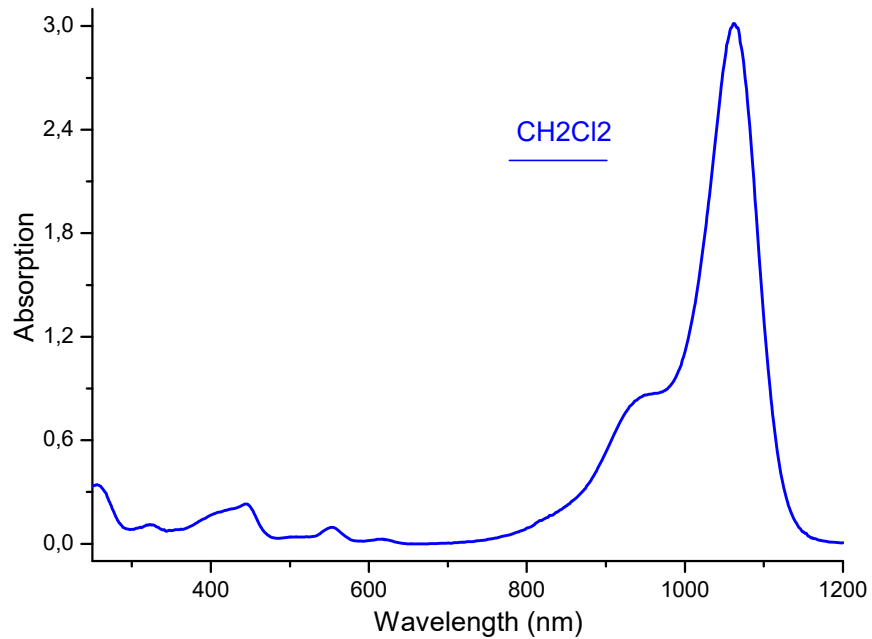
M-1 cm-1

Emission

nm

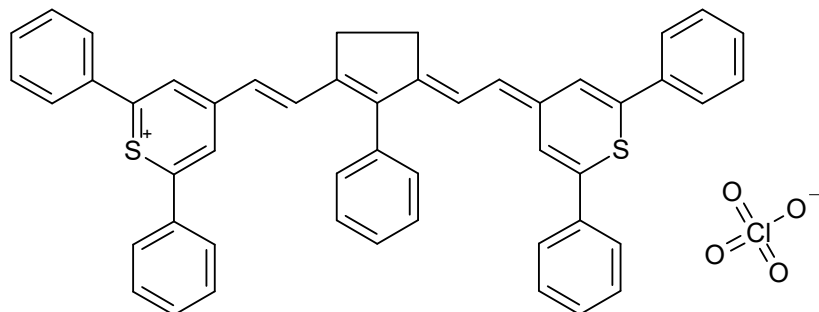
C₄₄H₃₄BClF₄S₂

749.1472



S01991

CAS #



Absorption

Methylene chloride

1066 nm 309000 M-1 cm-1

nm

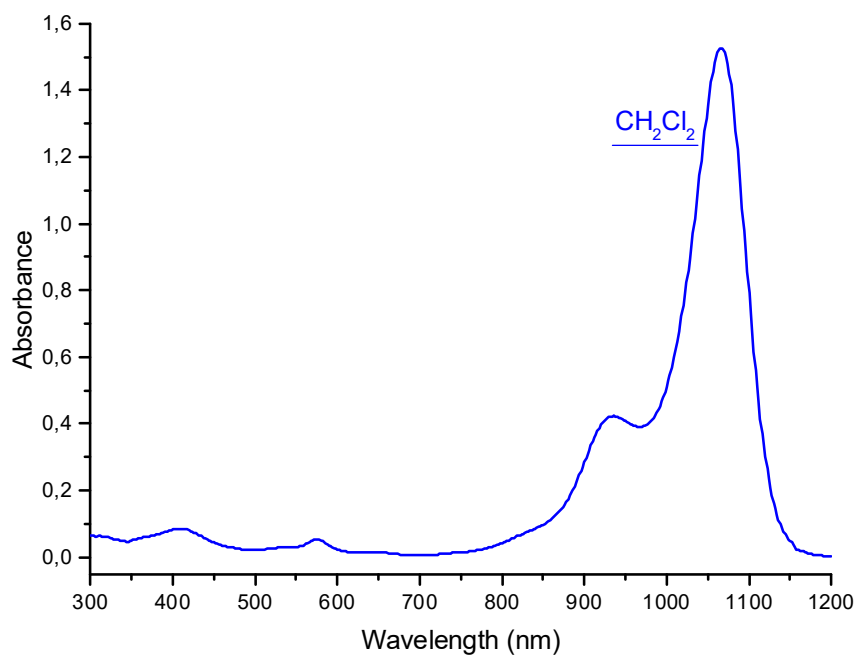
M-1 cm-1

Emission

nm

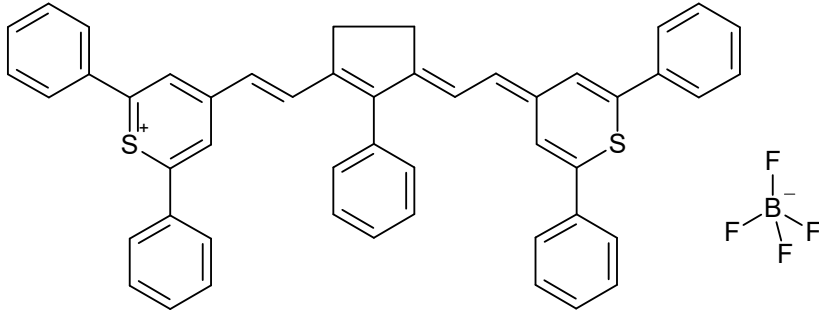
C₄₉H₃₇ClO₄S₂

789.4198



S02111

CAS #



Absorption

Methylene chloride

1066 nm 309000 M-1 cm-1

nm

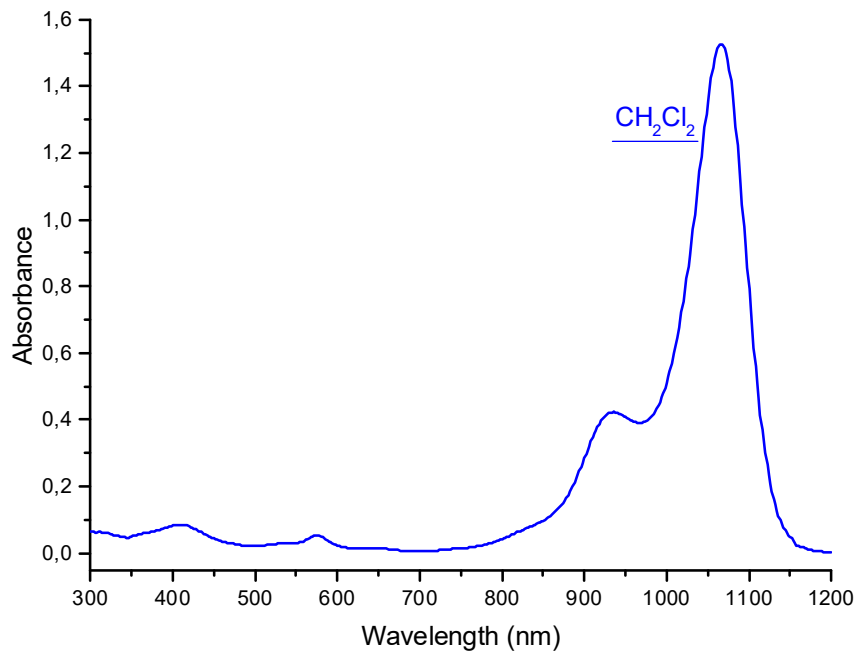
M-1 cm-1

Emission

nm

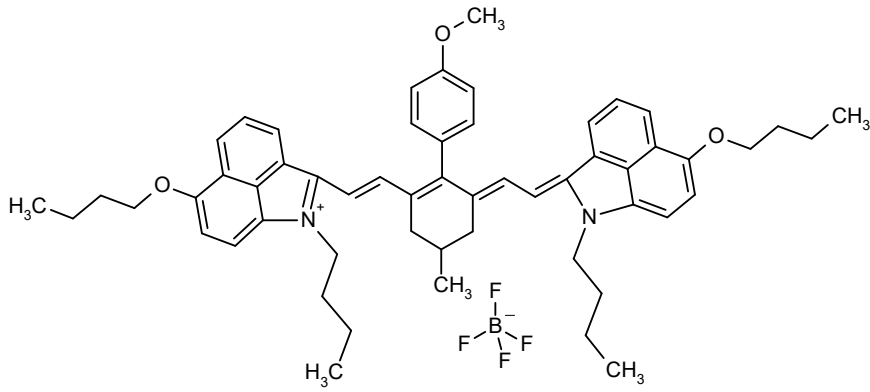
$\text{C}_{49}\text{H}_{37}\text{BF}_4\text{S}_2$

776.7738



S01450

CAS #



Absorption

Methylene chloride

1067 nm 276500 M-1 cm-1

Methanol

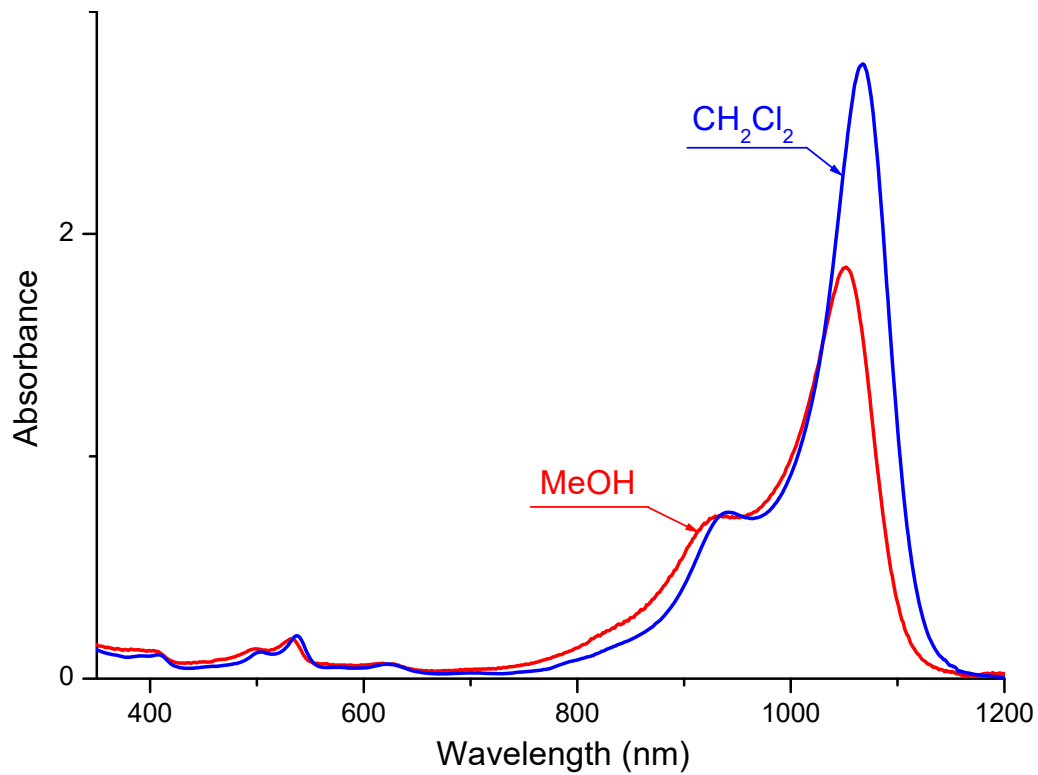
1052 nm 185000 M-1 cm-1

Emission

nm

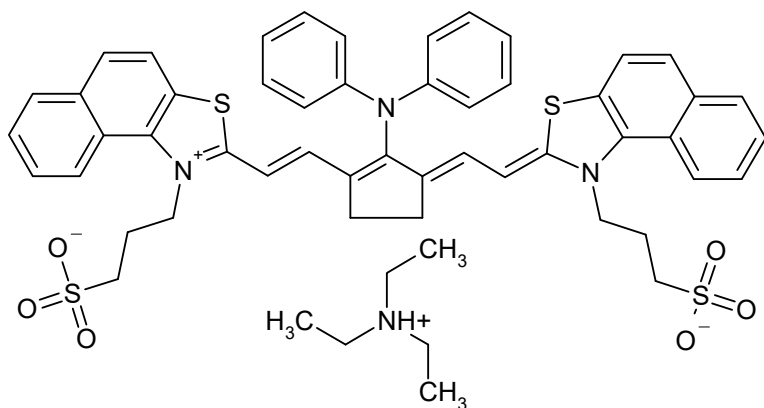
C₅₆H₆₅BF₄N₂O₃

900.9587



S01988

CAS #



Absorption

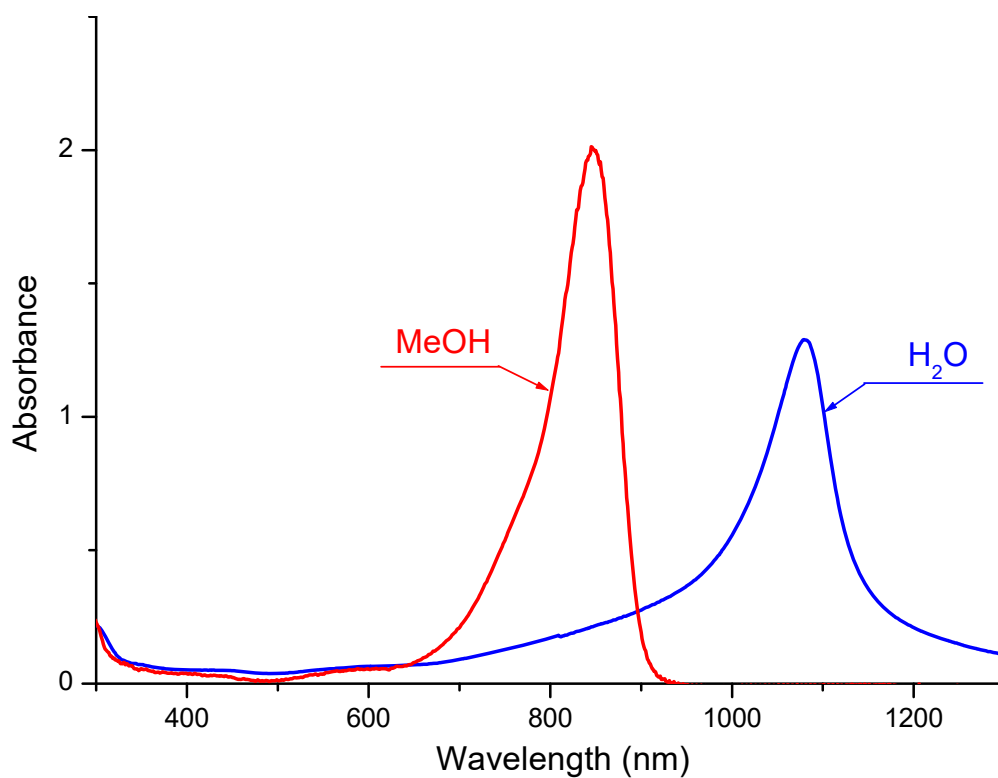
		Water		
1079	nm	129000	M-1	cm-1
<hr/>				
		Methanol		
845	nm	201300	M-1	cm-1

Emission

nm

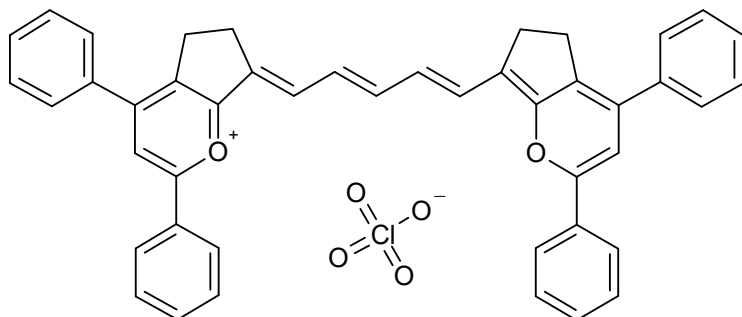
C₅₆H₅₈N₃O₆S₄

997.3592



S01995

CAS #



Absorption

Methylene chloride

1080 nm 235000 M-1 cm-1

nm

M-1 cm-1

Emission

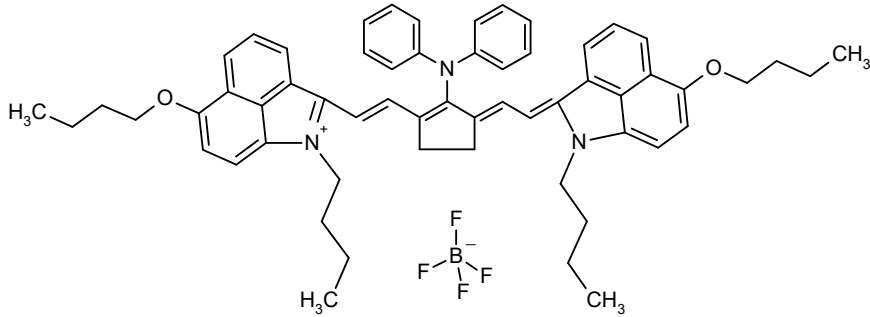
nm

C₄₅H₃₅ClO₆

707.2301

S01453

CAS #



Absorption

Methylene chloride

1087 nm 228900 M-1 cm-1

Methanol

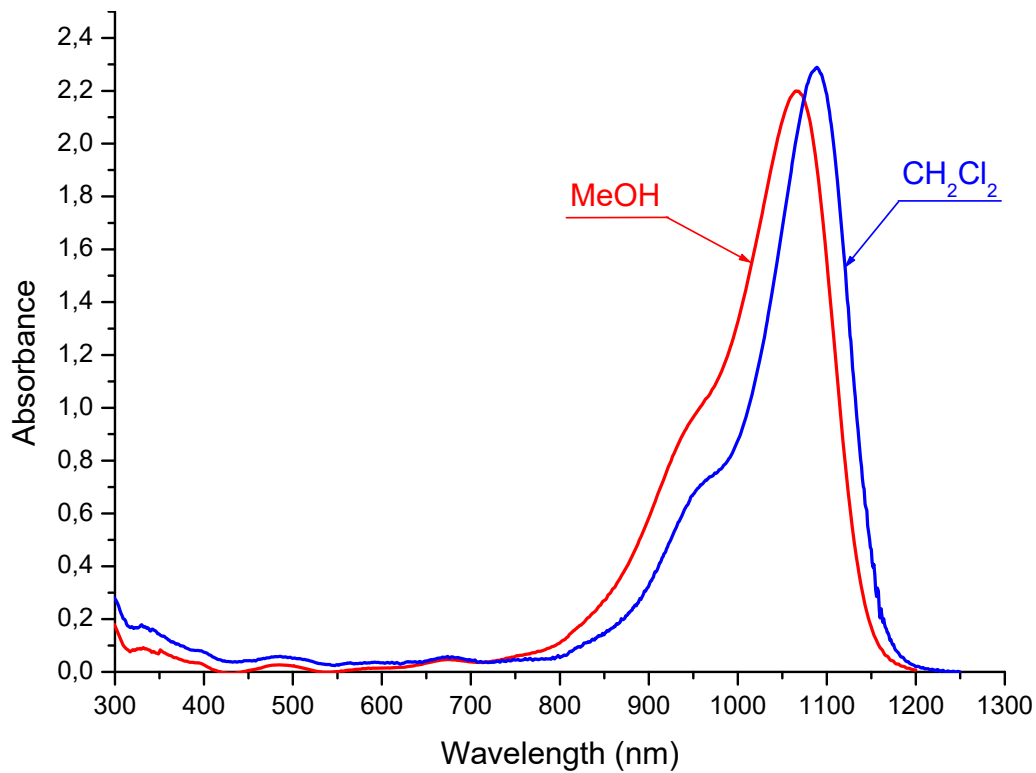
1065 nm 219900 M-1 cm-1

Emission

nm

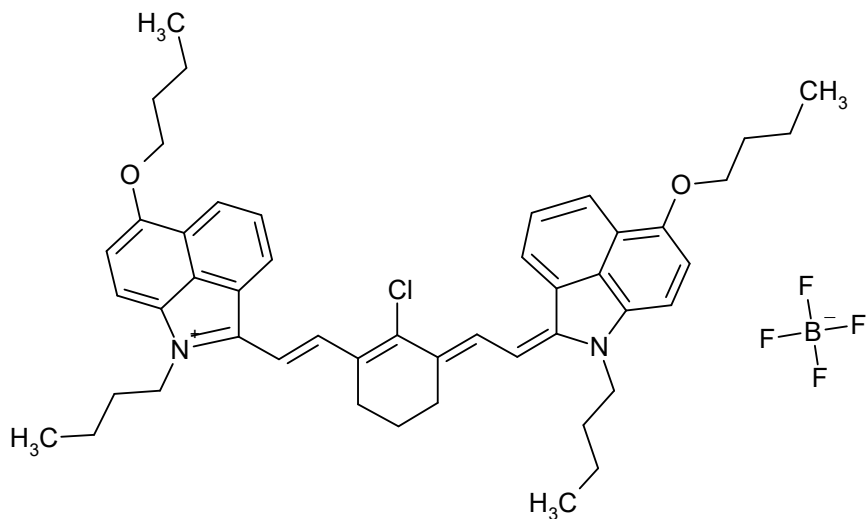
C₅₉H₆₄BF₄N₃O₂

933.9914



S04288

CAS #



Absorption

Methylene chloride

1090 nm 277500 M-1 cm-1

Acetonitrile

1075 nm 168900 M-1 cm-1

Emission

nm

C₄₈H₅₆BClF₄N₂O₂

815.2513

